

**TARA Exposed Shower Set 11-3/4" - Dark Chrome**

TARA

26 623 892 Product version from 4/1/2024



- Projection 16-1/2"
- Rainshower
- Rain shower diameter 11-3/4"
- Rain shower with descaling system
- Rain shower water flow rate limited to max. 1.8 gpm (at 3 bar)
- Function from: 1.7 gpm
- Shower head / hand shower diverter
- Height from center of faucet to bottom of rainhead 39-5/8"
- Height from center of faucet to top of shower arm 46"
- Wall bracket with flange Ø 2-1/8"
- Flange for wall connection Ø 2-1/4"
- Shower mixer with flange Ø 2-1/2"
- Center to center 5-7/8" ± 1/2"
- 59" metal shower hose
- 1/2" connection
- Pipe diameter 3/4"
- with drip prevention

This article does not include a hand shower!  
Internal backflow preventer.

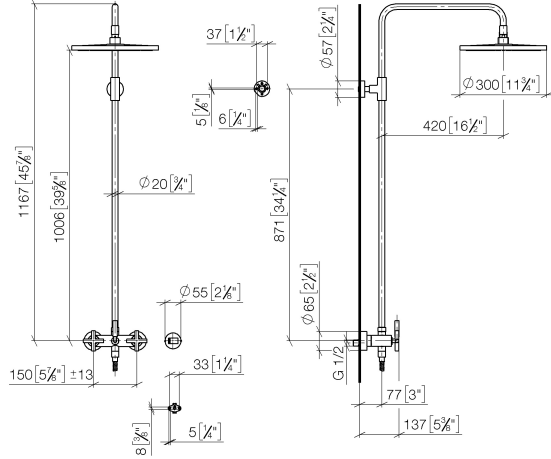
	Dark Chrome	26 623 892-19 0010
	Chrome	26 623 892-00 0010
	Brushed Platinum	26 623 892-06 0010
	Platinum	26 623 892-08 0010
	Brushed Durabrass (23kt Gold)	26 623 892-28 0010
	Matte Black	26 623 892-33 0010
	Brushed Bronze	26 623 892-42 0010
	Brushed Champagne (22kt Gold)	26 623 892-46 0010
	Champagne (22kt Gold)	26 623 892-47 0010
	Brushed Chrome	26 623 892-93 0010
	Brushed Dark Platinum	26 623 892-99 0010

## TARA Exposed Shower Set 11-3/4" - Dark Chrome

TARA

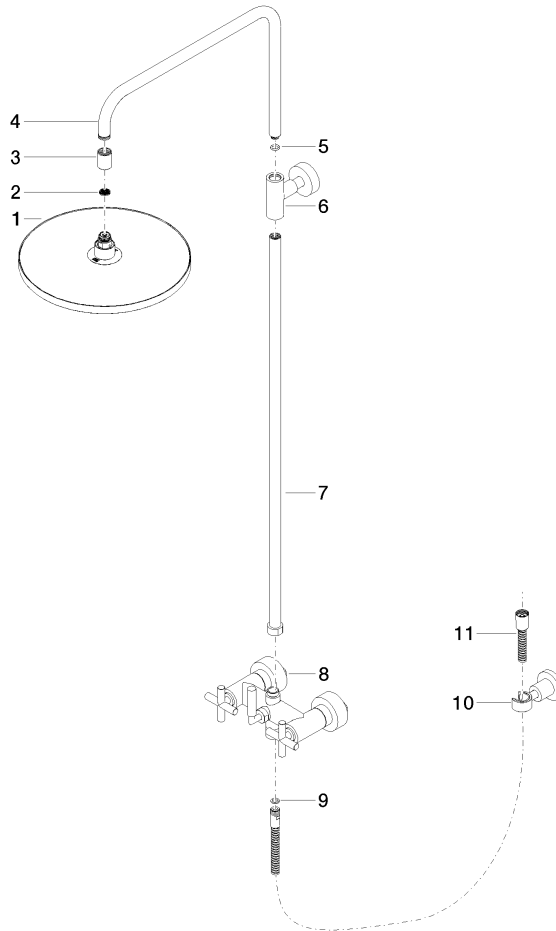
26 623 892 Product version from 4/1/2024

mm [inches]  
1:10



26 623 892 Product version from 4/1/2024

Parts for other  
finishes can be found  
here: [Chrome](#)



## Spare parts list

Number	Item Number	Designation	Number of units	Lead time
9	90 14 20 026 00 90	seal	1.00	2
3	09 24 03 177 20-19	adaptor	1.00	20
10	28 050 892-19	TARA Wall bracket - Dark Chrome	1.00	20
8	04 17 10 020 01-19	fitting	1.00	20
1	04 12 05 091 10-19	shower	1.00	20
7	90 28 22 096 00-19	pipe	1.00	20
4	04 28 22 101 20-19	spout	1.00	20
6	90 17 11 037 00-19	holder	1.00	20
2	09 23 01 039 90	sieve	1.00	2
5	90 14 10 011 00 90	seal	1.00	2
11	28 304 970-19	Metal shower hose 1/2" x 3/8" x 59" - Dark Chrome	1.00	20