



LULU Deck-mounted tub mixer, with hand shower set for deck-mounted tub installation - Chrome

LULU


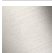
27 512 710 Product version from 8/31/2015 to 5/15/2020



- Spout: Round aerated stream
- Water flow rate limited to max. 6.2 gpm
- Hand-held shower: COMPACT RAIN, flow rate max. 1.8 gpm (at 3 bar)
- Hand shower set with anti-scale technology
- 8-1/2" Projection
- Integrated diverter
- Total height 4-3/8"
- Height to aerator/spout outlet 3-1/4"
- Valve hole diameter 1-1/4"
- Spout hole diameter 1-1/4"
- Hole diameter for hand shower set 1-1/4"
- 2-1/2" x 2-1/2" flange for spout
- Hand shower set with flange 2-1/2" x 2-1/2"
- Valve with flange 2-1/2" x 2-1/2"
- Metal shower hose 68-7/8" with anti-twist device

Internal backflow preventer.

NOTE: Local building codes may require the use of an anti-scald device. Please refer to remote pressure balance valve (35 914 970 90)

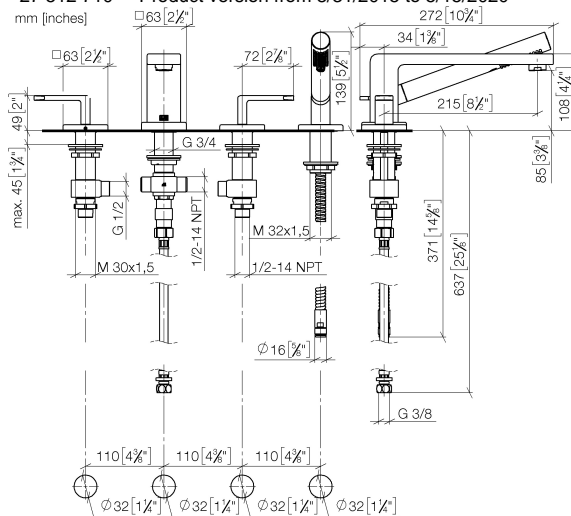
	Chrome	27 512 710-00
	Brushed Platinum	27 512 710-06

LULU Deck-mounted tub mixer, with hand shower set for deck-mounted tub installation - Chrome

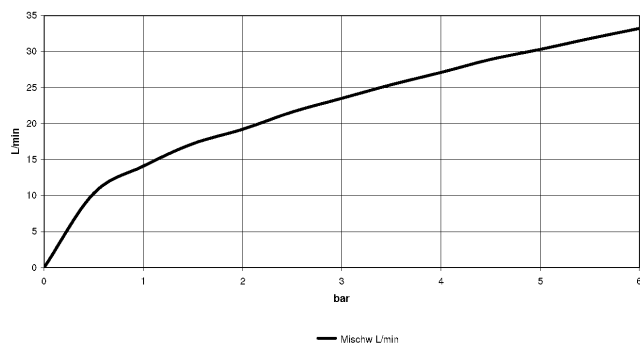
LULU

27 512 710 Product version from 8/31/2015 to 5/15/2020

mm [inches]



Flow rate chart



Codes & Standards

ASME A112.18.1	California Energy Commission (CEC)	cUPC	DIN 4109
ISO 3822	Ü-Zeichen		



LULU Deck-mounted tub mixer, with hand shower set for deck-mounted tub installation - Chrome

LULU

27 512 710 Product version from 8/31/2015 to 5/15/2020

Certificates and sustainability

LGA_19

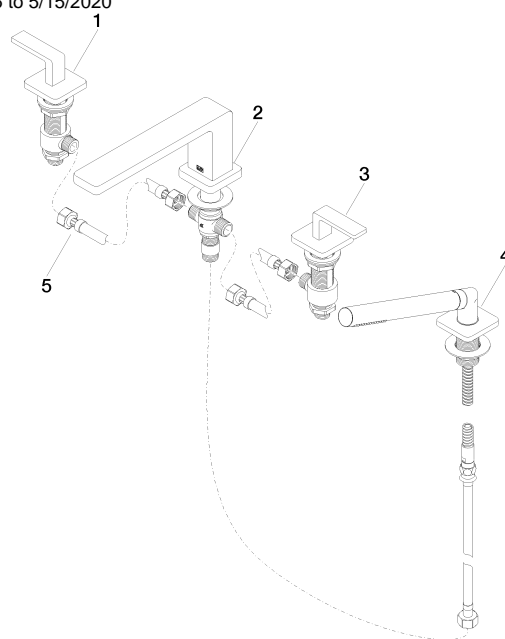
IAPMO_4976

LULU Deck-mounted tub mixer, with hand shower set for deck-mounted tub installation - Chrome

LULU

27 512 710 Product version from 8/31/2015 to 5/15/2020

Parts for other
finishes can be found
here: Brushed
Platinum



Spare parts list

Number	Item Number	Designation	Number of units	Lead time
4	27 702 710-00	LULU Hand shower set for deck-mounted tub installation - Chrome	1.00	-
Spare part can no longer be ordered, please order the replacement item				
5	12 502 970 90	Flexible supply line 1/2" x 1/2" x 15-3/4" -	1.00	2
3	20 000 711-00	side panel	1.00	60
2	13 512 710-00	spout	1.00	60
1	20 000 710-00	side panel	1.00	60