



CYO Deck-mounted tub mixer, with hand shower set for deck-mounted tub installation - Brushed Dark Platinum

CYO

27 632 811



- 6-5/8" Projection
- Spout: Rectangular aerator
- Water flow rate limited to max. 6.3 gpm
- Hand-held shower: COMPACT RAIN, flow rate max. 1.8 gpm (at 3 bar)
- Hand shower set with anti-scale technology
- Integrated diverter
- Total height 7-3/4"
- Height to aerator/spout outlet 5-1/4"
- Spout hole diameter 1-1/8"
- Hole diameter for hand shower set 1-1/4"
- Flange for mixer 2-3/8" x 2-3/8"
- Hand shower set with flange 2-3/8" x 2-3/8"
- Metal shower hose 68-7/8" with anti-twist device

Internal backflow preventer.

NOTE: Local building codes may require the use of an anti-scald device. Please refer to remote pressure balance valve (35 914 970 90)

	Brushed Dark Platinum	27 632 811-99
	Chrome	27 632 811-00
	Brushed Platinum	27 632 811-06
	Dark Chrome	27 632 811-19
	Brushed Durabronze (23kt Gold)	27 632 811-28

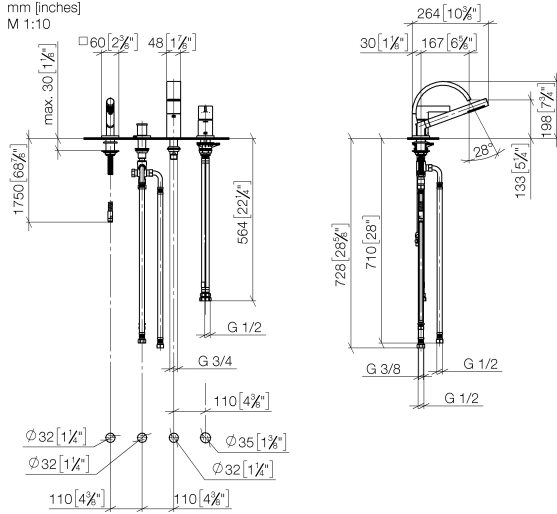
## CYO Deck-mounted tub mixer, with hand shower set for deck-mounted tub installation - Brushed Dark Platinum

CYO

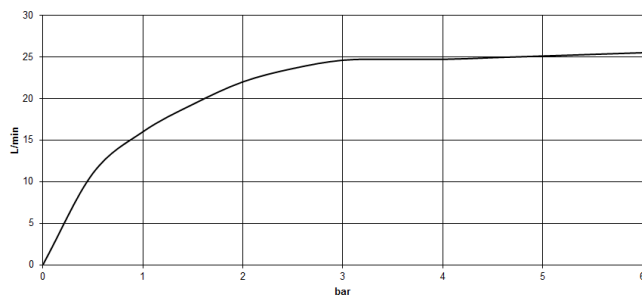
27 632 811

mm [inches]

M 1:10



### Flow rate chart



### Codes & Standards

ASME A112.18.1	California Energy Commission (CEC)	cUPC	DIN 4109
EN 1717	ISO 3822	Scottish Water Byelaws	UK Water Supply Regulations

Ü-Zeichen



CYO Deck-mounted tub mixer, with hand shower set for deck-mounted tub installation - Brushed Dark Platinum

CYO

27 632 811

Certificates and sustainability

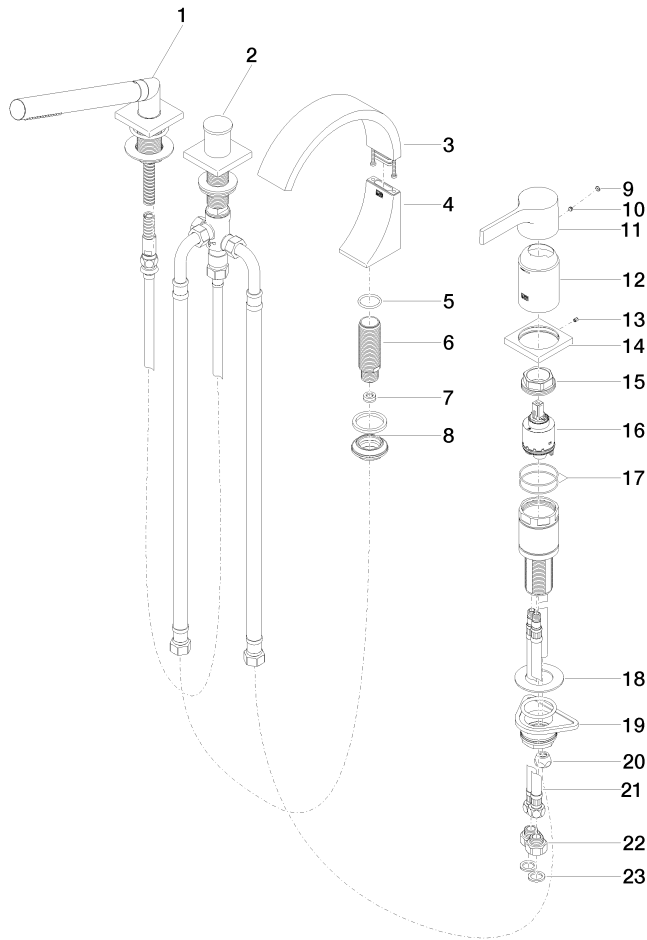
LGA_38	IAPMO_4976	WRAS_2204	Belgaqua_21-380-2
--------	------------	-----------	-------------------

# CYO Deck-mounted tub mixer, with hand shower set for deck-mounted tub installation - Brushed Dark Platinum

CYO

27 632 811

Parts for other  
finishes can be found  
here: [Chrome](#)





## CYO Deck-mounted tub mixer, with hand shower set for deck-mounted tub installation - Brushed Dark Platinum

CYO

27 632 811

### Spare parts list

Number	Item Number	Designation	Number of units	Lead time
16	90 15 05 039 00 90	cartridge	1.00	2
7	09 23 01 057 90	flow reducer	1.00	2
22	09 24 03 185-00	nipple	2.00	10
3	90 11 70 013 00-99	spout	1.00	20
11	09 20 67 007-99	handle	1.00	20
18	09 30 11 060 90	disc	1.00	2
6	09 30 01 117 90	connection	1.00	2
12	09 28 30 037-99	cover	1.00	20
1	27 702 980-99	Hand shower set for deck-mounted tub installation - Brushed Dark Platinum	1.00	20
19	04 23 10 044 02 90	fixing set	1.00	2
21	04 30 04 021 00 90	hose	2.00	2
9	90 31 20 087 00-99	plug	1.00	20
5	09 14 10 009 90	seal	1.00	2
14	09 27 67 016-99	rosette	1.00	20
20	04 23 30 041 00 90	threaded connector	1.00	2
4	90 19 70 011 00-99	connection	1.00	20
13	09 31 11 044 90	pin	1.00	2
17	09 14 10 201 90	seal	2.00	2
8	04 23 10 044 09 90	fixing set	1.00	2
2	29 140 670-99	Two-way diverter for deck-mounted tub installation - Brushed Dark Platinum	1.00	20
15	09 24 04 448 90	nut	1.00	2
23	09 14 05 004 90	seal	2.00	2
10	90 31 11 063 00 90	pin	1.00	2