

VAIA Hand shower set for deck-mounted tub installation - Brushed Champagne (22kt Gold)

VAIA

27 702 809 Product version from 3/13/2017 to 5/15/2020



- COMPACT RAIN, flow rate max. 1.8 gpm (at 3 bar)
- Descaling system
- Flange diameter 2-3/8"
- 1-1/4" hole diameter
- Metal shower hose 68-7/8" with anti-twist device

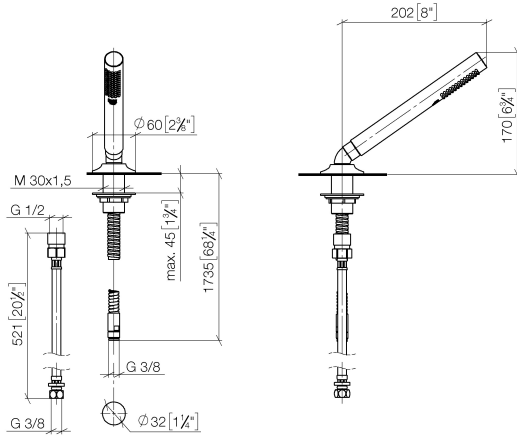
Internal backflow preventer.

	Brushed Champagne (22kt Gold)	27 702 809-46
	Chrome	27 702 809-00
	Brushed Platinum	27 702 809-06
	Platinum	27 702 809-08
	Dark Chrome	27 702 809-19
	Brushed Durabronze (23kt Gold)	27 702 809-28
	Brushed Dark Brass	27 702 809-39
	Brushed Bronze	27 702 809-42
	Champagne (22kt Gold)	27 702 809-47
	Brushed Dark Platinum	27 702 809-99

VAIA Hand shower set for deck-mounted tub installation - Brushed Champagne (22kt Gold)

VAIA

27 702 809 Product version from 3/13/2017 to 5/15/2020
mm [inches]



Flow rate chart



Codes & Standards

ASME A112.18.1	California Energy Commission (CEC)	cUPC	EN 1717
Scottish Water Byelaws	UK Water Supply Regulations		



VAIA Hand shower set for deck-mounted tub installation - Brushed Champagne (22kt Gold)

VAIA

27 702 809 Product version from 3/13/2017 to 5/15/2020

Certificates and sustainability

Belgaqua_22_282_2 IAPMO_4976

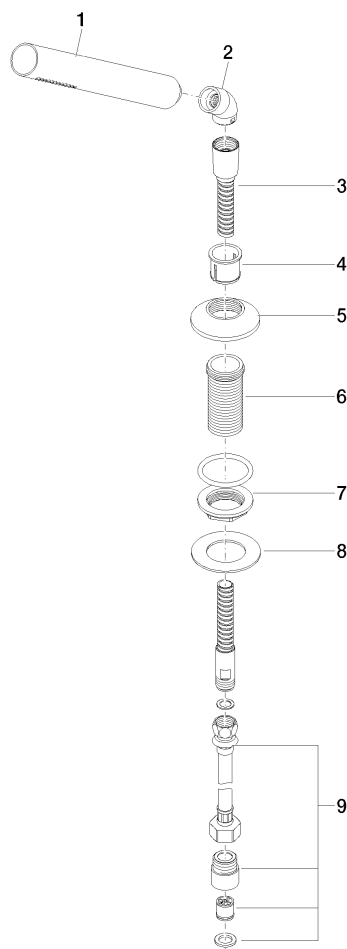
WRAS_2209

VAIA Hand shower set for deck-mounted tub installation - Brushed Champagne (22kt Gold)

VAIA

27 702 809 Product version from 3/13/2017 to 5/15/2020

Parts for other
finishes can be found
here: [Chrome](#)



Spare parts list

Number	Item Number	Designation	Number of units	Lead time
3	28 322 970-46	Metal shower hose 1/2" x 3/8" x 68-7/8" - Brushed Champagne (22kt Gold)	1.00	30
9	12 505 970 90	Flexible supply line 1/2" x 3/8" x 19-5/8" -	1.00	2
6	09 30 01 090-07	sleeve	1.00	30
5	09 27 80 016-46	rosette	1.00	30
7	04 23 10 032 46 90	fixing set	1.00	2
8	09 30 11 060 90	disc	1.00	2
4	90 18 40 085 00 90	sleeve	1.00	2
2	90 24 04 019 00-46	angle	1.00	30
1	90 12 11 140 41-46	shower	1.00	30