

Hand shower set for deck-mounted tub installation - Dark Chrome

27 702 979 Product version from 5/15/2020



- COMPACT RAIN, flow rate max. 1.8 gpm (at 3 bar)
- Descaling system
- Flange diameter 2"
- 1-1/4" hole diameter
- Metal shower hose 68-7/8" with anti-twist device

Subsequent shower hose replacement possible without removing the fitting due to two-part construction.

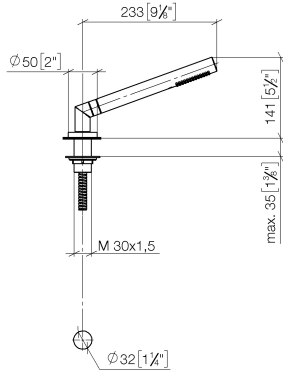
Internal backflow preventer.

| | | |
|---|--------------------------------|---------------|
|  | Dark Chrome | 27 702 979-19 |
|  | Chrome | 27 702 979-00 |
|  | Brushed Platinum | 27 702 979-06 |
|  | Platinum | 27 702 979-08 |
|  | Durabronze (23kt Gold) | 27 702 979-09 |
|  | Brushed Light Gold | 27 702 979-27 |
|  | Brushed Durabronze (23kt Gold) | 27 702 979-28 |
|  | Matte Black | 27 702 979-33 |
|  | Brushed Bronze | 27 702 979-42 |
|  | Brushed Champagne (22kt Gold) | 27 702 979-46 |
|  | Champagne (22kt Gold) | 27 702 979-47 |
|  | Brushed Chrome | 27 702 979-93 |
|  | Brushed Dark Platinum | 27 702 979-99 |

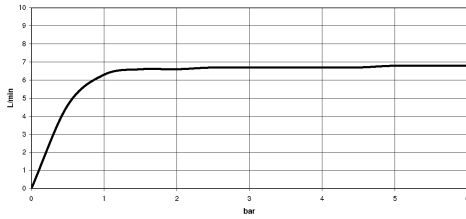
Hand shower set for deck-mounted tub installation - Dark Chrome

27 702 979 Product version from 5/15/2020

mm [inches]



Flow rate chart



Codes & Standards

| | | | |
|-----------------------------|---------------------------|------------------------------------|------------------------|
| ASME A112.18.1 | ASME A112.18.1/CSA B125.1 | California Energy Commission (CEC) | cUPC |
| DIN 4109 | EN 1717 | ISO 3822 | Scottish Water Byelaws |
| UK Water Supply Regulations | Ü-Zeichen | | |



Hand shower set for deck-mounted tub installation - Dark Chrome

27 702 979 Product version from 5/15/2020

Certificates

LGA_29

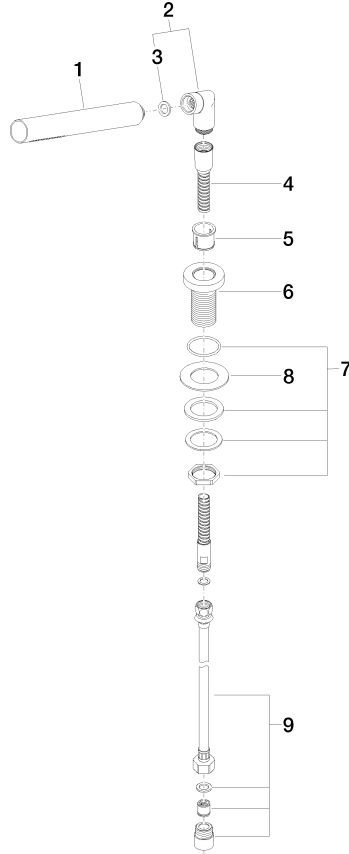
IAPMO_4976

Belgaqua_21-383-2 WRAS_2209

Hand shower set for deck-mounted tub installation - Dark Chrome

27 702 979 Product version from 5/15/2020

Parts for other finishes can be found here: [Chrome](#)



Spare parts list

| Number | Item Number | Designation | Number of units | Lead time |
|--------|--------------------|---|-----------------|-----------|
| 1 | 28 019 979-19 | Hand shower - Dark Chrome | 1 | 60 |
| 2 | 04 24 04 287 00-19 | nipple | 1 | 20 |
| 3 | 90 14 20 002 00 90 | seal | 1 | 2 |
| 4 | 28 322 970-19 | Metal shower hose 1/2" x 3/8" x 68-7/8" - Dark Chrome | 1 | 20 |
| 5 | 90 18 40 085 00 90 | sleeve | 1 | 2 |
| 6 | 09 30 01 085-19 | rosette | 1 | 20 |
| 7 | 04 30 11 038 66 90 | fixing set | 1 | 2 |
| 8 | 09 30 11 060 90 | disc | 1 | 2 |
| 9 | 12 505 970 90 | Flexible supply line 1/2" x 3/8" x 19-5/8" - | 1 | 2 |