



- With square flange
- Spray mode
- Integrated diverter
- Total height 7-1/2"
- Side spray hole diameter 1-1/4"
- Fabric braided spray hose 59"
- Sprayface with descaling system
- lead-free










Can only be combined with 33826680, 32815680.

Internal backflow preventer.

Residual water may drip from the sprayer after shut-off

Flexible positioning of components.

Button has to be pressed while using.

	Brushed Platinum	27 723 970-06
	Chrome	27 723 970-00
	Platinum	27 723 970-08
	Dark Chrome	27 723 970-19
	Brushed Durabronze (23kt Gold)	27 723 970-28
	Brushed Bronze	27 723 970-42
	Brushed Champagne (22kt Gold)	27 723 970-46
	Champagne (22kt Gold)	27 723 970-47
	Brushed Dark Platinum	27 723 970-99



Codes & Standards

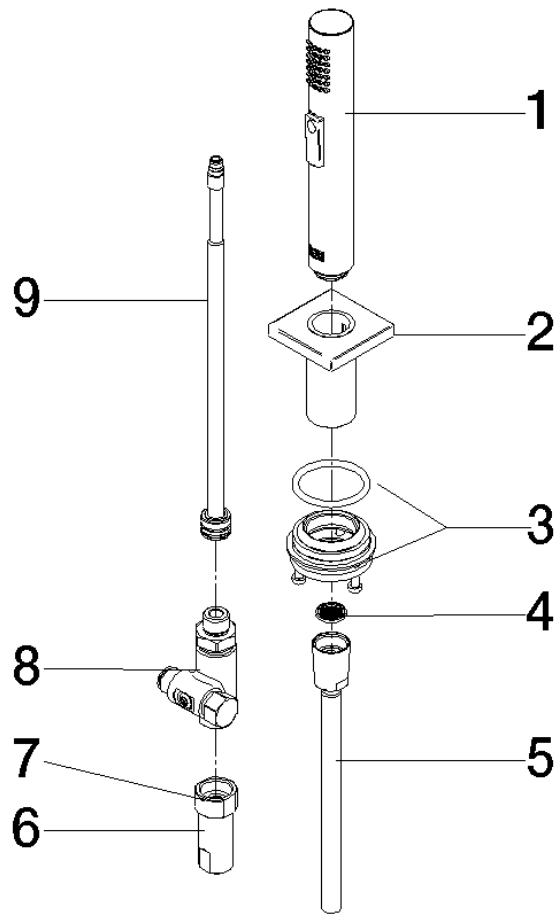
DIN 4109	ISO 3822	NSF372	NSF61
----------	----------	--------	-------

Ü-Zeichen

Certificates and sustainability

LGA_29	IAPMO_N-4976	IAPMO_6397
--------	--------------	------------

Parts for other  
finishes can be found  
here: [Chrome](#)



### Spare parts list

Number	Item Number	Designation	Number of units	Lead time
1	04 12 11 158 00-06	shower	1.00	10
4	09 23 01 039 90	sieve	1.00	2
2	90 27 78 011 00-06	shaft	1.00	10
9	90 28 20 068 00 90	connection	1.00	2
8	90 17 09 046 12 90	diverter	1.00	2
3	90 30 10 058 00 90	fixing set	1.00	2
6	90 24 03 241 00 90	nipple	1.00	2
5	90 30 02 062 00-06	hose	1.00	10
7	90 14 20 026 00 90	seal	1.00	2