



Hand shower set with integrated wall bracket FlowReduce - Brushed
Champagne (22kt Gold)

SERIES SPECIFIC

27 802 660 Product version from 10/1/2023



- COMPACT RAIN, flow rate max. 1.8 gpm (at 3 bar)
- Descaling system
- 3/8" Shower outlet
- Metal shower hose 49-1/4" with anti-twist device
- Flange diameter 2-3/8"
- 1/2" connection
- This product reduces water consumption by 28% (compared to requirements of EPAct '92)
- This product contributes to meeting the requirements of the LEED® Green Building Rating
- This product can help a building meet the requirements of Green Building Rating Systems, e.g. LEED®, BREEAM®, DGNB

Internal backflow preventer.

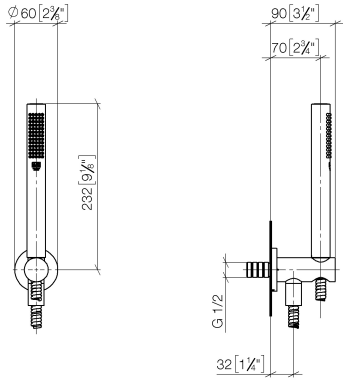
	Brushed Champagne (22kt Gold)	27 802 660-46 0010
	Chrome	27 802 660-00 0010
	Brushed Platinum	27 802 660-06 0010
	Platinum	27 802 660-08 0010
	Dark Chrome	27 802 660-19 0010
	Light gold	27 802 660-26 0010
	Brushed Light Gold	27 802 660-27 0010
	Brushed Durabronze (23kt Gold)	27 802 660-28 0010
	Matte Black	27 802 660-33 0010
	Brushed Bronze	27 802 660-42 0010
	Champagne (22kt Gold)	27 802 660-47 0010
	Brushed Chrome	27 802 660-93 0010
	Brushed Dark Platinum	27 802 660-99 0010



Hand shower set with integrated wall bracket FlowReduce - Brushed
Champagne (22kt Gold)

SERIES SPECIFIC

27 802 660 Product version from 10/1/2023
mm [inches]



Codes & Standards

California Energy Commission (CEC)	DIN 4109	ISO 3822	Ü-Zeichen
--	----------	----------	-----------

Certificates and sustainability

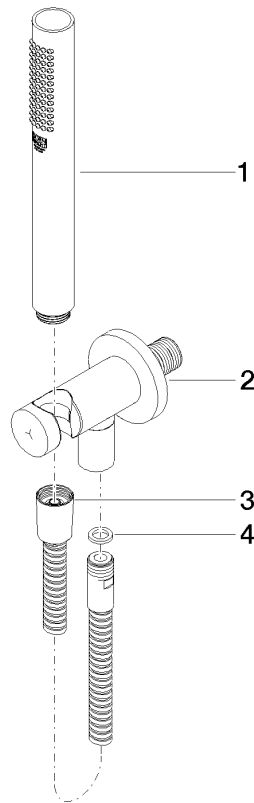
LGA_29

Hand shower set with integrated wall bracket FlowReduce - Brushed Champagne (22kt Gold)

SERIES SPECIFIC

27 802 660 Product version from 10/1/2023

Parts for other
finishes can be found
here: [Chrome](#)



Spare parts list

Number	Item Number	Designation	Number of units	Lead time
3	90 30 02 072 00-46	Metal shower hose 1/2" x 3/8" x 49-1/4" - Brushed Champagne (22kt Gold)	1.00	30
2	28 490 660-46	Wall elbow with integrated wall bracket - Brushed Champagne (22kt Gold)	1.00	30
4	90 14 20 026 00 90	seal	1.00	2
1	90 12 11 140 41-46	shower	1.00	30