



WATER TUBE Kneipp wall elbow with hose bracket with individual flanges -  
Brushed Dark Brass

SERIES SPECIFIC

27 821 979    Product version from 3/6/2023



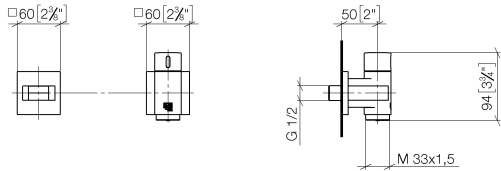
- LAMINAR FLOW, max. flow rate 4 gpm (at 3 bar)
- with volume control
- Flange 2-3/8" x 2-3/8"
- Bracket for Kneipp hose
- 1/2" wall elbow
- Hose to be ordered separately

Internal backflow preventer.  
Product change as of 1.4.2023: Water flow rate limited to max. 4 gpm

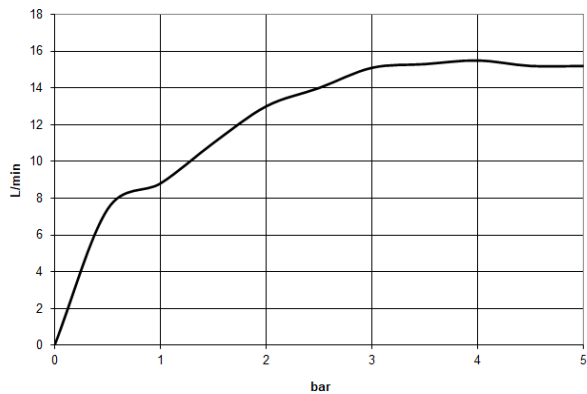
	Brushed Dark Brass	27 821 979-39
	Chrome	27 821 979-00
	Brushed Platinum	27 821 979-06
	Platinum	27 821 979-08
	Dark Chrome	27 821 979-19
	Brushed Light Gold	27 821 979-27
	Brushed Durabronze (23kt Gold)	27 821 979-28
	Matte Black	27 821 979-33
	Brushed Champagne (22kt Gold)	27 821 979-46
	Champagne (22kt Gold)	27 821 979-47
	Brushed Chrome	27 821 979-93
	Brushed Dark Platinum	27 821 979-99

**WATER TUBE Kneipp wall elbow with hose bracket with individual flanges - SERIES SPECIFIC**  
**Brushed Dark Brass**

27 821 979 Product version from 3/6/2023  
 mm [inches]



**Flow rate chart**



**Codes & Standards**

EN 1717



## WATER TUBE Kneipp wall elbow with hose bracket with individual flanges - Brushed Dark Brass

---

SERIES SPECIFIC

27 821 979 Product version from 3/6/2023

Certificates and sustainability

---

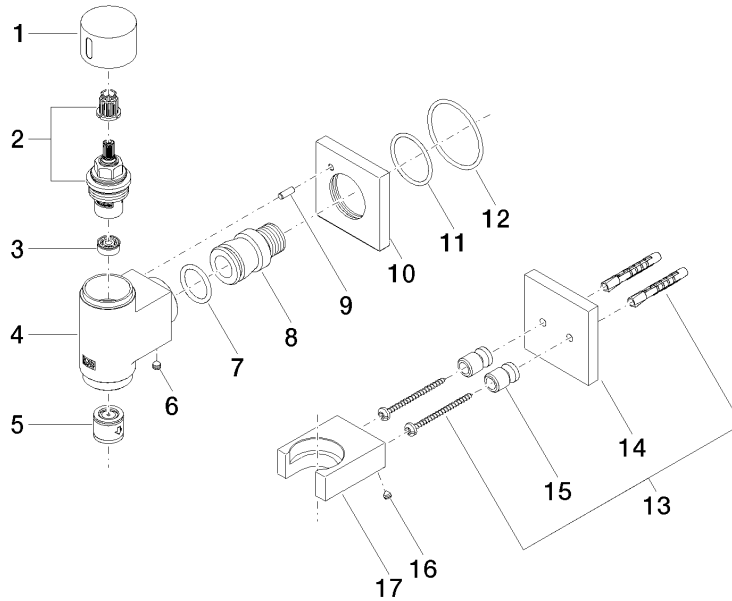
Belgaqua\_22\_280\_2

## WATER TUBE Kneipp wall elbow with hose bracket with individual flanges - Brushed Dark Brass

SERIES SPECIFIC

27 821 979 Product version from 3/6/2023

Parts for other  
finishes can be found  
here: [Chrome](#)



### Spare parts list

Number	Item Number	Designation	Number of units	Lead time
17	09 17 20 023-39	holder	1.00	60
4	09 11 03 135-39	connection	1.00	-
Spare part can no longer be ordered, please order the replacement item				
7	09 14 10 081 90	seal	1.00	2
1	09 20 97 021-39	handle	1.00	60
3	90 23 01 146 00 90	flow reducer	1.00	2
2	90 90 03 145 00 90	top	1.00	2
11	09 14 10 119 90	seal	1.00	2
12	90 14 10 049 00 90	seal	1.00	2
13	05 30 31 025 00 90	fixing set	1.00	2
9	09 31 11 040 90	pin	1.00	2
6	90 31 11 112 00 90	pin	1.00	2
5	90 23 01 045 00 90	back-flow preventer	1.00	2
8	09 24 03 151 90	nipple	1.00	2
14	09 27 97 022-39	rosette	1.00	60
10	09 27 97 021-39	rosette	1.00	60
16	09 31 11 148 90	pin	2.00	2
15	08 17 20 726 90	holder	2.00	2