

Affusion pipe with cover plate - Platinum

SERIES SPECIFIC

27 838 979    Product version up to 3/2/2021



- LAMINAR FLOW, max. flow rate 4 gpm (at 3 bar)
  - 3/8" Shower outlet
  - Cover plate 9-1/2" x 2-3/8"
  - Metal shower hose 49-1/4" with anti-twist device
  - 1/2" connection
  - Plug-in connection mounting
- Internal backflow preventer.**

Internal backflow preventer.

|   |                                  |               |
|---|----------------------------------|---------------|
|  | Platinum                         | 27 838 979-08 |
|  | Chrome                           | 27 838 979-00 |
|  | Brushed Platinum                 | 27 838 979-06 |
|  | Dark Chrome                      | 27 838 979-19 |
|  | Brushed Light Gold               | 27 838 979-27 |
|  | Brushed Durabrass<br>(23kt Gold) | 27 838 979-28 |
|  | Matte Black                      | 27 838 979-33 |
|  | Brushed Chrome                   | 27 838 979-93 |
|  | Brushed Dark<br>Platinum         | 27 838 979-99 |

Required article

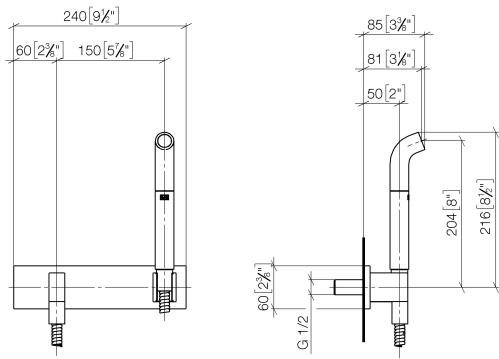
Rough-in adapter -

35 080 970-90  
0010

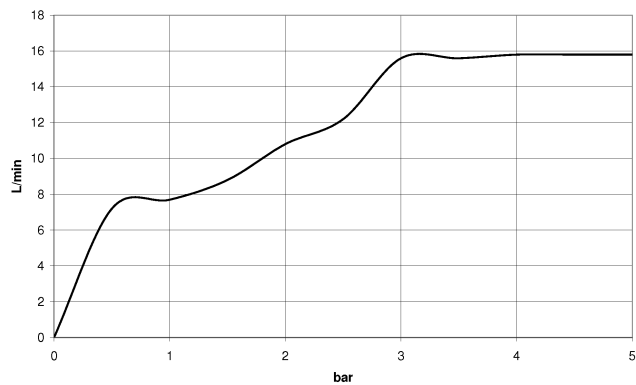


27 838 979 Product version up to 3/2/2021

mm [inches]



### Flow rate chart



### Codes & Standards

DIN 4109

EN 1717

ISO 3822

Ü-Zeichen



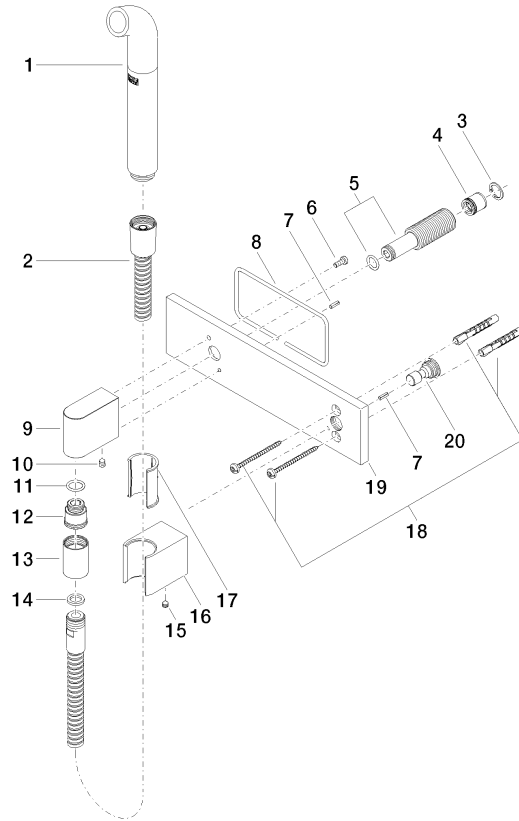
## Affusion pipe with cover plate - Platinum

SERIES SPECIFIC

27 838 979 Product version up to 3/2/2021

Certificates and sustainability

Belgaqua\_21-023-2 LGA\_38



## Spare parts list

| Number | Item Number        | Designation  | Number of units | Lead time |
|--------|--------------------|--|-----------------|-----------|
| 19     | 09 11 02 133-08    | plate  | 1.00            | 40        |
| 3      | 09 16 01 014 90    | ring   | 1.00            | 2         |
| 20     | 09 24 03 073 90    | nipple   | 1.00            | 2         |
| 2      | 90 30 02 072 00-08 | Metal shower hose 1/2" x 3/8" x 49-1/4" - Platinum | 1.00            | 40        |
| 7      | 09 31 11 026 90    | pin  | 2.00            | 2         |
| 18     | 05 30 31 025 00 90 | fixing set   | 1.00            | 2         |
| 8      | 09 14 03 127 90    | seal   | 1.00            | 2         |
| 12     | 09 24 03 107 20 90 | nipple   | 1.00            | 2         |
| 9      | 09 11 03 046-08    | connection   | 1.00            | 40        |
| 1      | 04 12 11 073 01-08 | spout  | 1.00            | 40        |
| 16     | 09 17 20 044-08    | holder   | 1.00            | 40        |
| 17     | 09 18 40 078 90    | sleeve   | 1.00            | 2         |
| 6      | 09 14 10 008 90    | seal   | 1.00            | 2         |
| 5      | 90 24 03 212 00 90 | nipple   | 1.00            | 2         |
| 13     | 90 21 02 069 00-08 | cover  | 1.00            | 40        |
| 14     | 90 14 20 026 00 90 | seal   | 1.00            | 2         |
| 4      | 09 23 01 046 90    | back-flow preventer                                | 1.00            | 2         |
| 11     | 90 14 10 077 00 90 | seal   | 1.00            | 2         |
| 15     | 90 31 11 112 00 90 | pin  | 1.00            | 2         |
| 10     | 90 31 11 004 00 90 | pin  | 1.00            | 2         |