



WATER TUBE Kneipp wall elbow with hose bracket with individual flanges
FlowReduce - Brushed Dark Brass

SERIES SPECIFIC

27 841 979 Product version from 6/1/2024



- LAMINAR FLOW, max. flow rate 2.4 gpm (at 3 bar)
- with volume control
- Flange 2-3/8" x 2-3/8"
- Bracket for Kneipp hose
- 1/2" wall elbow
- Hose to be ordered separately
- This product can help a building meet the requirements of Green Building Rating Systems, e.g. LEED®, BREEAM®, DGNB

Internal backflow preventer.

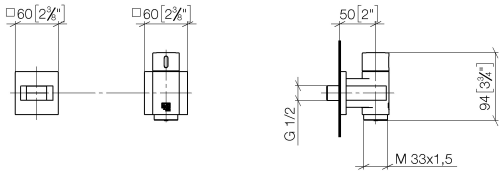
| | | |
|---|--------------------------------|---------------|
|  | Brushed Dark Brass | 27 841 979-39 |
|  | Chrome | 27 841 979-00 |
|  | Brushed Platinum | 27 841 979-06 |
|  | Platinum | 27 841 979-08 |
|  | Dark Chrome | 27 841 979-19 |
|  | Brushed Light Gold | 27 841 979-27 |
|  | Brushed Durabronze (23kt Gold) | 27 841 979-28 |
|  | Matte Black | 27 841 979-33 |
|  | Brushed Champagne (22kt Gold) | 27 841 979-46 |
|  | Champagne (22kt Gold) | 27 841 979-47 |
|  | Brushed Chrome | 27 841 979-93 |
|  | Brushed Dark Platinum | 27 841 979-99 |

WATER TUBE Kneipp wall elbow with hose bracket with individual flanges
FlowReduce - Brushed Dark Brass

SERIES SPECIFIC

27 841 979 Product version from 6/1/2024

mm [inches]



Flow rate chart



Codes & Standards

EN 1717



WATER TUBE Kneipp wall elbow with hose bracket with individual flanges FlowReduce - Brushed Dark Brass

SERIES SPECIFIC

27 841 979 Product version from 6/1/2024

Certificates and sustainability

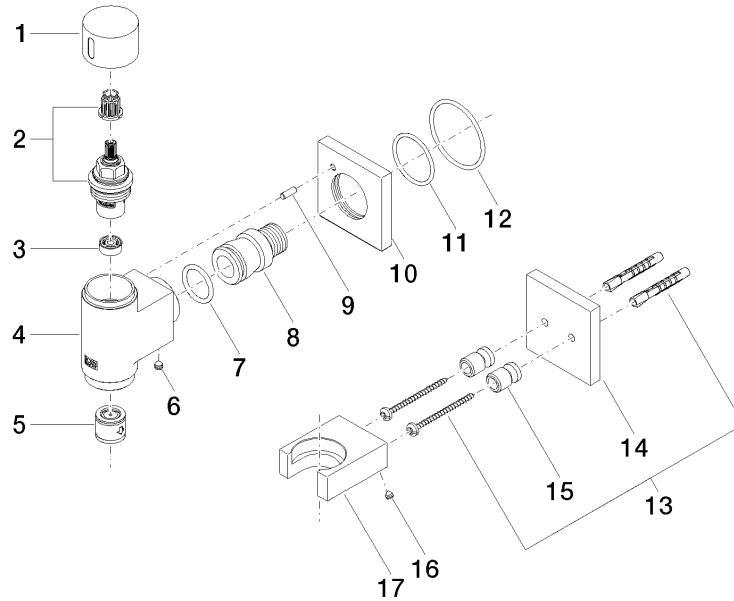
Belgaqua_24-007-2

WATER TUBE Kneipp wall elbow with hose bracket with individual flanges FlowReduce - Brushed Dark Brass

SERIES SPECIFIC

27 841 979 Product version from 6/1/2024

Parts for other
finishes can be found
here: [Chrome](#)





WATER TUBE Kneipp wall elbow with hose bracket with individual flanges FlowReduce - Brushed Dark Brass

SERIES SPECIFIC

27 841 979 Product version from 6/1/2024

Spare parts list

| Number | Item Number | Designation | Number of units | Lead time |
|--|--------------------|---------------------|-----------------|-----------|
| 3 | 90 23 01 145 00 90 | flow reducer | 1.00 | 2 |
| 2 | 90 90 03 145 00 90 | top | 1.00 | 2 |
| 10 | 09 27 97 021-39 | rosette | 1.00 | - |
| Spare part can no longer be ordered, please order the replacement item | | | | |
| 6 | 90 31 11 112 00 90 | pin | 1.00 | 2 |
| 8 | 09 24 03 151 90 | nipple | 1.00 | 2 |
| 4 | 09 11 03 135-39 | connection | 1.00 | - |
| Spare part can no longer be ordered, please order the replacement item | | | | |
| 11 | 09 14 10 119 90 | seal | 1.00 | 2 |
| 9 | 09 31 11 040 90 | pin | 1.00 | 2 |
| 15 | 08 17 20 726 90 | holder | 1.00 | 2 |
| 14 | 09 27 97 022-39 | rosette | 1.00 | - |
| Spare part can no longer be ordered, please order the replacement item | | | | |
| 13 | 05 30 31 025 00 90 | fixing set | 1.00 | 2 |
| 16 | 09 31 11 148 90 | pin | 2.00 | 2 |
| 5 | 90 23 01 045 00 90 | back-flow preventer | 1.00 | 2 |
| 1 | 09 20 97 021-39 | handle | 1.00 | 60 |
| 12 | 90 14 10 049 00 90 | seal | 1.00 | 2 |
| 7 | 09 14 10 081 90 | seal | 1.00 | 2 |
| 17 | 09 17 20 023-39 | holder | 1.00 | 60 |