

MADISON Metal hand shower with porcelain (white) handle FlowReduce - Chrome

MADISON

28 002 970










- Ø 2-1/2"
- COMPACT RAIN, flow rate max. 1.8 gpm (at 3 bar)
- 1/2" connection

Notes:

- This product reduces water consumption by 28% (compared to requirements of EPAct '92)
- This product contributes to meeting the requirements of the LEED® Green Building Rating
- This product can help a building meet the requirements of Green Building Rating Systems, e.g. LEED®, BREEAM®, DGNB

Internal backflow preventer.

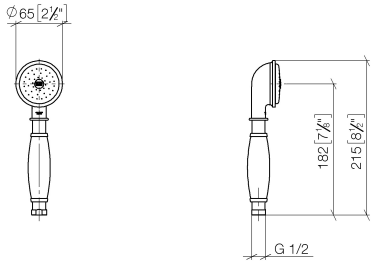
	Chrome	28 002 970-00 0010
	Brushed Platinum	28 002 970-06 0010
	Platinum	28 002 970-08 0010
	Durabrand (23kt Gold)	28 002 970-09 0010
	Brushed Durabrand (23kt Gold)	28 002 970-28 0010
	Brushed Chrome	28 002 970-93 0010
	Brushed Dark Platinum	28 002 970-99 0010



MADISON Metal hand shower with porcelain (white) handle FlowReduce - Chrome

MADISON

28 002 970
mm [inches]



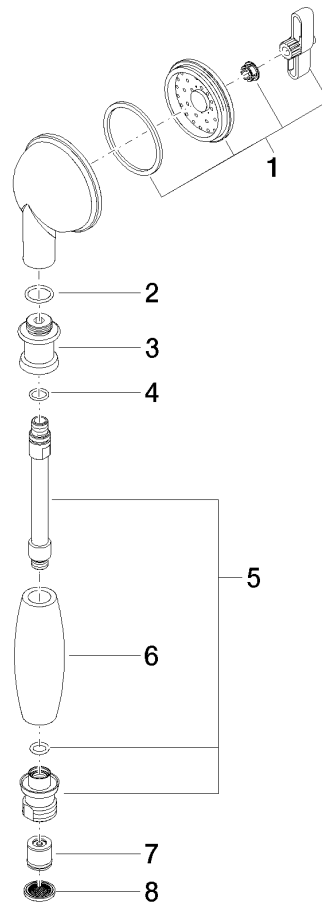
Codes & Standards

ASME A112.18.1	California Energy Commission (CEC)	cUPC	DIN 4109
EPA WaterSense	ISO 3822	Ü-Zeichen	WaterSense



Certificates and sustainability

IAPMO_11777	LGA_8	IAPMO_4976 (
-------------	-------	--------------



Spare parts list

Number	Item Number	Designation	Number of units	Lead time
3	09 24 04 059 20-00	nipple	1.00	10
6	11 167 820 60	handle	1.00	2
1	90 12 01 010 00 90	set	1.00	2
5	90 28 22 033 00-00	insert	1.00	10
2	09 14 10 069 90	seal	1.00	2
4	09 14 10 042 90	seal	1.00	2
7	09 23 01 166 90	flow reducer	1.00	2
8	09 23 01 039 90	sieve	1.00	2