


MADISON Metal hand shower with porcelain (white) handle FlowReduce -  
Brushed Platinum

MADISON

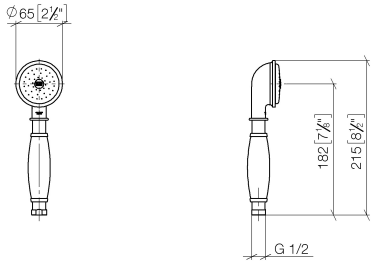
<div>28 002 970</div> <div>  </div>	<ul style="list-style-type: none"> <li>• Ø 2-1/2"</li> <li>• COMPACT RAIN, flow rate max. 1.8 gpm (at 3 bar)</li> <li>• 1/2" connection</li> </ul> <p><b>Notes:</b></p> <ul style="list-style-type: none"> <li>• This product reduces water consumption by 28% (compared to requirements of EPAct '92)</li> <li>• This product contributes to meeting the requirements of the LEED® Green Building Rating</li> <li>• This product can help a building meet the requirements of Green Building Rating Systems, e.g. LEED®, BREEAM®, DGNB</li> </ul> <p>Internal backflow preventer.</p>	<div> <div></div> <div>Brushed Platinum</div> </div> <div>28 002 970-06 0010</div> <hr/> <div> <div></div> <div>Chrome</div> </div> <div>28 002 970-00 0010</div> <hr/> <div> <div></div> <div>Platinum</div> </div> <div>28 002 970-08 0010</div> <hr/> <div> <div></div> <div>Durabrass (23kt Gold)</div> </div> <div>28 002 970-09 0010</div> <hr/> <div> <div></div> <div>Brushed Durabrass (23kt Gold)</div> </div> <div>28 002 970-28 0010</div> <hr/> <div> <div></div> <div>Brushed Chrome</div> </div> <div>28 002 970-93 0010</div> <hr/> <div> <div></div> <div>Brushed Dark Platinum</div> </div> <div>28 002 970-99 0010</div>
--	--	---



MADISON Metal hand shower with porcelain (white) handle FlowReduce -  
Brushed Platinum

MADISON

28 002 970  
mm [inches]



Codes & Standards

ASME A112.18.1	California Energy Commission (CEC)	cUPC	DIN 4109
EPA WaterSense	ISO 3822	Ü-Zeichen	WaterSense



Certificates and sustainability

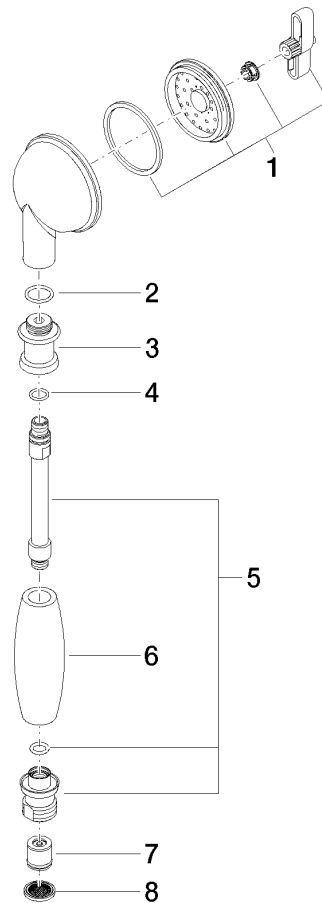
IAPMO\_11777      LGA\_8      IAPMO\_4976 (

# MADISON Metal hand shower with porcelain (white) handle FlowReduce - Brushed Platinum

MADISON

28 002 970

Parts for other  
finishes can be found  
here: [Chrome](#)



## Spare parts list

Number	Item Number	Designation	Number of units	Lead time
4	09 14 10 042 90	seal	1.00	2
6	11 167 820 60	handle	1.00	2
5	90 28 22 033 00-06	insert	1.00	-
Spare part can no longer be ordered, please order the replacement item				
7	09 23 01 166 90	flow reducer	1.00	2
1	90 12 01 010 00 90	set	1.00	2
3	09 24 04 059 20-06	nipple	1.00	10
2	09 14 10 069 90	seal	1.00	2
8	09 23 01 039 90	sieve	1.00	2