

Rain shower flush mounted with light 11-3/4" x 9-1/2" - Matte Black

SERIES SPECIFIC

28 044 980 Product version from 5/1/2022



- 11-3/4" x 9-1/2" Rain showerhead
 - PURE RAIN, flow rate max. 1.8 gpm (at 3 bar)
 - PURIFY RAIN, flow rate max. 1.6 gpm (at 3 bar)
 - Min. rough in depth 5-3/8"
 - Descaling system
- Ceiling module power supply**
- 12V DC (CV)
- Spot lighting**
- Color LED light RGBW
 - Lights protected against splashing
- Ambient lighting**
- Color LED light RGBW
 - Lights protected against splashing
- Control**
- ZigBee Light Link RGBW Controller
 - To be provided by the customer: Zigbee Gateway
- Environment**
- Not suitable for outdoor use.
 - Not suitable for use in a steam room.
 - Not suitable for use in chlorinated or salty environments.
 - Observe the regulations concerning protected zones specified in DIN VDE 0100, Part 701 (IEC 60364-7-701).
 - Dornbracht recommends consulting a systems integrator.
- To meet the North American plumbing standards, this application must be installed with a diverter (rough included). includes light bulbs of energy efficiency class G**
- Diverter trim is sold separately**
- To meet the North American plumbing standards, this application must be installed with a diverter (rough included).
- includes light bulbs of energy efficiency class G
- Diverter trim is sold separately

	Matte Black	28 044 980-33 0010
	Chrome	28 044 980-00 0010
	Brushed Platinum	28 044 980-06 0010
	Platinum	28 044 980-08 0010
	Dark Chrome	28 044 980-19 0010
	Brushed Light Gold	28 044 980-27 0010
	Brushed Durabrass (23kt Gold)	28 044 980-28 0010
	Brushed Champagne (22kt Gold)	28 044 980-46 0010
	Champagne (22kt Gold)	28 044 980-47 0010
	Brushed Chrome	28 044 980-93 0010
	Brushed Dark Platinum	28 044 980-99 0010

Required article



- Installation rough flush mounted with light -**

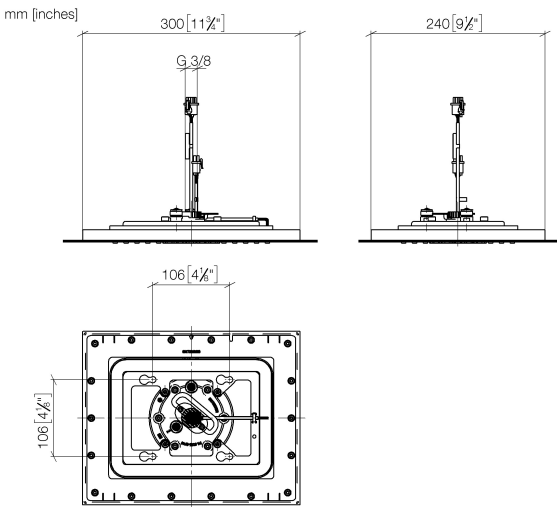
35 044 970-90 0010
- Must be provided by the customer: Zigbee Gateway!
 - Installation depth 5-3/8"
 - Pre-assembly kit for three-way diverter included



Rain shower flush mounted with light 11-3/4" x 9-1/2" - Matte Black

SERIES SPECIFIC

28 044 980 Product version from 5/1/2022



Codes & Standards

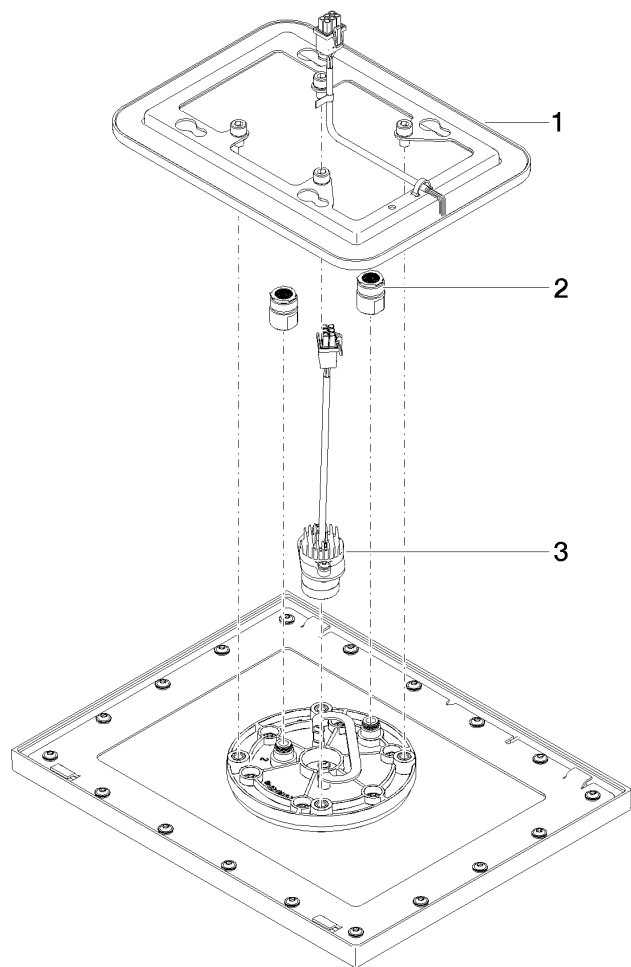
ASME A112.18.1	California Energy Commission (CEC)	cUPC	EPA WaterSense
----------------	------------------------------------	------	----------------

WaterSense



Certificates and sustainability

IAPMO_11777	IAPMO_4976
-------------	------------



Spare parts list

Number	Item Number	Designation	Number of units	Lead time
2	90 24 03 309 02 90	connection	2.00	2
3	90 10 01 225 00 90	electronic accessories	1.00	2
1	90 10 01 224 00 90	electronic accessories	1.00	2