

Wall bracket - Brushed Platinum

SERIES SPECIFIC

28 050 625

Product version from 10/1/2023

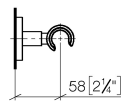
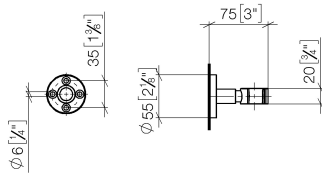
- Flange diameter 2-1/8"



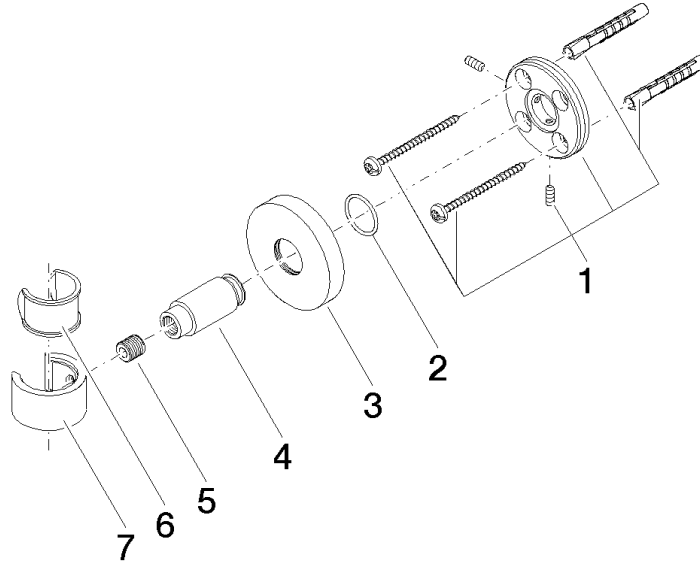
	Brushed Platinum	28 050 625-06
	Chrome	28 050 625-00
	Dark Chrome	28 050 625-19
	Light gold	28 050 625-26
	Brushed Light Gold	28 050 625-27
	Brushed Durabrass (23kt Gold)	28 050 625-28
	Matte Black	28 050 625-33
	Brushed Bronze	28 050 625-42
	Brushed Champagne (22kt Gold)	28 050 625-46
	Champagne (22kt Gold)	28 050 625-47
	Cyprum	28 050 625-49
	Brushed Chrome	28 050 625-93
	Brushed Dark Platinum	28 050 625-99

28 050 625 Product version from 10/1/2023

mm [inches]



Parts for other
finishes can be found
here: [Chrome](#)



Spare parts list

Number	Item Number	Designation	Number of units	Lead time
3	08 27 62 500-06	rosette	1.00	10
1	05 17 62 500 00 90	fixing set	1.00	2
5	08 18 50 585 90	screw	1.00	2
4	08 17 62 550-06	holder	1.00	10
7	09 17 20 014-06	holder	1.00	10
6	90 18 40 035 00 90	sleeve	1.00	2
2	90 14 10 032 00 90	seal	1.00	2