

Wall bracket - Champagne (22kt Gold)

SERIES SPECIFIC

28 050 625

Product version from 10/1/2023

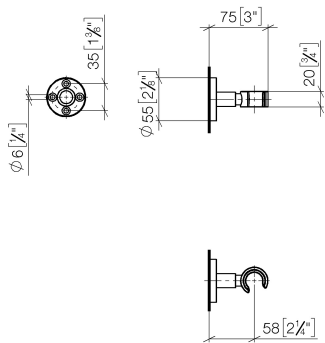
- Flange diameter 2-1/8"



	Champagne (22kt Gold)	28 050 625-47
	Chrome	28 050 625-00
	Brushed Platinum	28 050 625-06
	Dark Chrome	28 050 625-19
	Light gold	28 050 625-26
	Brushed Light Gold	28 050 625-27
	Brushed Durabronze (23kt Gold)	28 050 625-28
	Matte Black	28 050 625-33
	Brushed Bronze	28 050 625-42
	Brushed Champagne (22kt Gold)	28 050 625-46
	Cyprum	28 050 625-49
	Brushed Chrome	28 050 625-93
	Brushed Dark Platinum	28 050 625-99

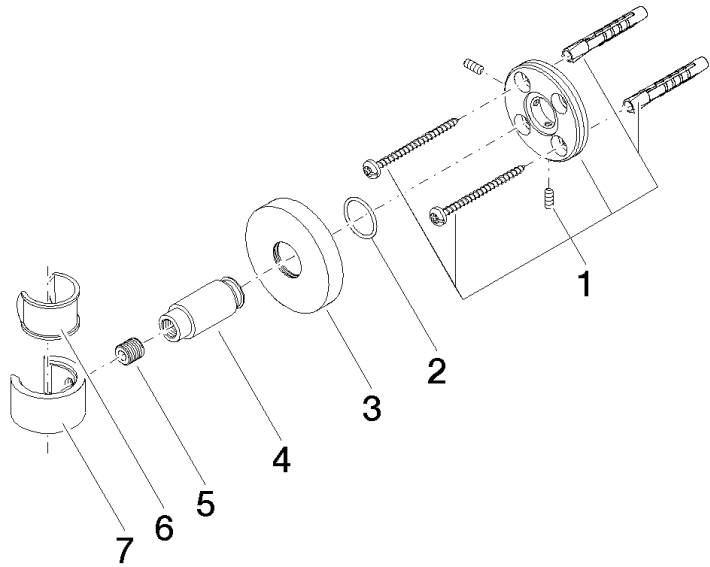
28 050 625 Product version from 10/1/2023

mm [inches]



28 050 625 Product version from 10/1/2023

Parts for other
finishes can be found
here: [Chrome](#)



Spare parts list

Number	Item Number	Designation	Number of units	Lead time
4	08 17 62 550-47	holder	1.00	60
1	05 17 62 500 00 90	fixing set	1.00	2
7	09 17 20 014-47	holder	1.00	60
2	90 14 10 032 00 90	seal	1.00	2
5	08 18 50 585 90	screw	1.00	2
3	08 27 62 500-47	rosette	1.00	30
6	90 18 40 035 00 90	sleeve	1.00	2