


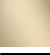





28 050 845 Product version from 3/9/2016 to 3/2/2021

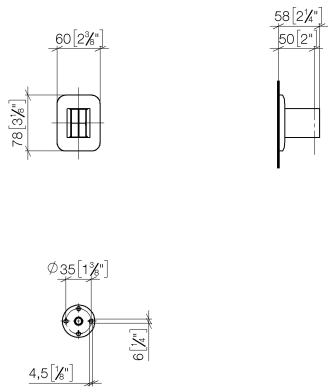
- Flange 2-3/8" x 3-1/8"



	Chrome	28 050 845-00
	Brushed Platinum	28 050 845-06
	Dark Chrome	28 050 845-19
	Brushed Light Gold	28 050 845-27
	Matte Black	28 050 845-33
	Brushed Chrome	28 050 845-93
	Brushed Dark Platinum	28 050 845-99

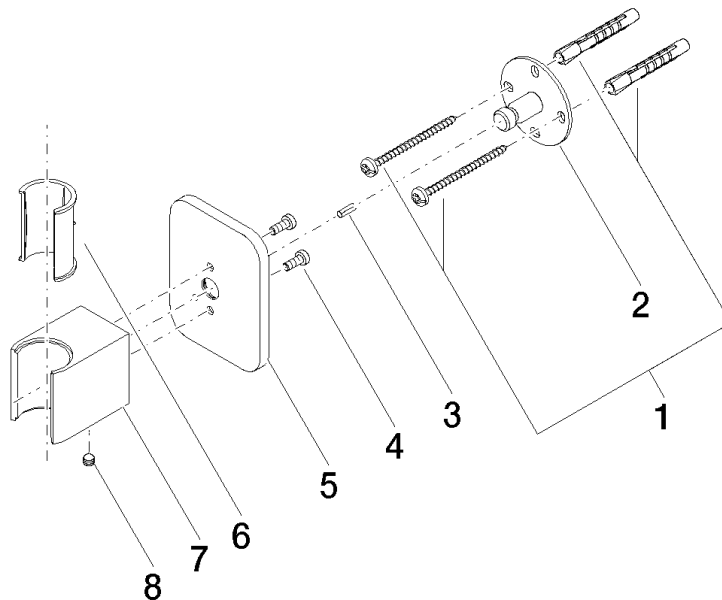
28 050 845 Product version from 3/9/2016 to 3/2/2021

mm [inches]



28 050 845 Product version from 3/9/2016 to 3/2/2021

Parts for other
finishes can be found
here: Brushed
Platinum



Spare parts list

Number	Item Number	Designation	Number of units	Lead time
2	09 30 11 041 90	disc	1.00	2
6	09 18 40 078 90	sleeve	1.00	2
5	09 27 84 022-00	rosette	1.00	10
3	09 31 11 026 90	pin	1.00	2
7	09 17 20 035-00	holder	1.00	60
1	05 30 31 025 00 90	fixing set	1.00	2
4	09 30 30 054 90	screw	2.00	2
8	90 31 11 112 00 90	pin	1.00	2