

TARA Wall bracket - Brushed Dark Platinum

TARA

28 050 892 Product version from 4/1/2024

- Flange diameter 2-1/8"



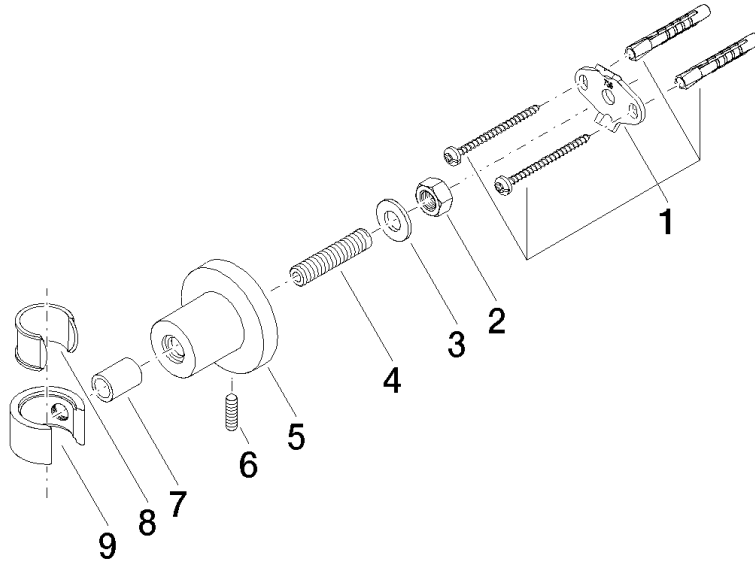
	Brushed Dark Platinum	28 050 892-99
	Chrome	28 050 892-00
	Brushed Platinum	28 050 892-06
	Platinum	28 050 892-08
	Dark Chrome	28 050 892-19
	Brushed Light Gold	28 050 892-27
	Brushed Durabronze (23kt Gold)	28 050 892-28
	Matte Black	28 050 892-33
	Brushed Bronze	28 050 892-42
	Brushed Champagne (22kt Gold)	28 050 892-46
	Champagne (22kt Gold)	28 050 892-47
	Cyprus	28 050 892-49
	Brushed Chrome	28 050 892-93

28 050 892 Product version from 4/1/2024

mm [inches]



Parts for other
finishes can be found
here: [Chrome](#)



Spare parts list

Number	Item Number	Designation	Number of units	Lead time
5	08 17 89 505-99	holder	1.00	20
7	08 17 20 624-99	holder	1.00	20
1	05 17 20 739 00 90	fixing set	1.00	2
3	09 30 11 046 90	disc	1.00	2
2	09 23 10 026 90	nut	1.00	2
9	09 17 20 014-99	holder	1.00	20
4	08 18 50 586 90	screw	1.00	2
6	04 31 11 113 00 90	pin	1.00	2
8	90 18 40 035 00 90	sleeve	1.00	2