



Wall elbow - Platinum

SERIES SPECIFIC

28 450 625 Product version up to 7/6/2018



- 3/8" Shower outlet
 - Flange diameter 2-1/8"
 - 1/2" connection
- Internal backflow preventer.**
- Internal backflow preventer.

	Platinum	28 450 625-08
	Chrome	28 450 625-00
	brushed chrome	28 450 625-04
	Brushed Platinum	28 450 625-06
	Dark Chrome	28 450 625-19
	Light gold	28 450 625-26
	Brushed Light Gold	28 450 625-27
	Brushed Durabrass (23kt Gold)	28 450 625-28
	Matte Black	28 450 625-33
	Brushed Bronze	28 450 625-42
	Aluminum	28 450 625-45
	Brushed Champagne (22kt Gold)	28 450 625-46
	Champagne (22kt Gold)	28 450 625-47
	Brushed Chrome	28 450 625-93
	Brushed Dark Platinum	28 450 625-99

Required article

Rough-in adapter -

35 080 970-90
0010





Flow rate chart



Codes & Standards

ASME A112.18.1	cUPC	EN 1717	Scottish Water Byelaws
UK Water Supply Regulations	XP P 41-280		



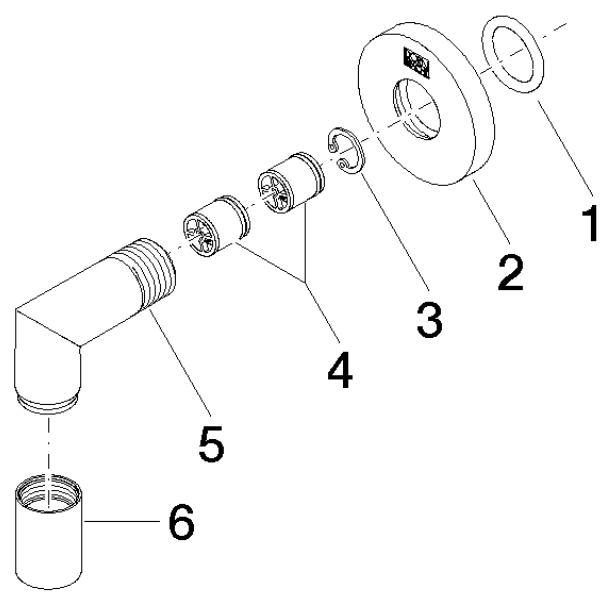
Wall elbow - Platinum

SERIES SPECIFIC

28 450 625 Product version up to 7/6/2018

Certificates and sustainability

Belgaqua_21-381-2 ACS_20 ACC LY IAPMO_4976 WRAS_240702



Spare parts list

Number	Item Number	Designation	Number of units	Lead time
5	09 11 03 036-08	connection	1.00	40
2	09 27 22 503-08	rosette	1.00	40
3	09 16 01 014 90	ring	1.00	2
4	90 23 01 141 00 90	back-flow preventer	2.00	2
1	90 14 10 026 00 90	seal	1.00	2
6	90 21 02 069 00-08	cover	1.00	40