

Wall elbow - Brushed Light Gold

SERIES SPECIFIC

28 450 625 Product version from 7/6/2018



- 3/8" Shower outlet
 - Flange diameter 2-1/8"
 - 1/2" connection
- Internal backflow preventer.

| | | |
|---|-------------------------------|---------------|
|  | Brushed Light Gold | 28 450 625-27 |
|  | Chrome | 28 450 625-00 |
|  | brushed chrome | 28 450 625-04 |
|  | Brushed Platinum | 28 450 625-06 |
|  | Platinum | 28 450 625-08 |
|  | Dark Chrome | 28 450 625-19 |
|  | Light gold | 28 450 625-26 |
|  | Brushed Durabrass (23kt Gold) | 28 450 625-28 |
|  | Matte Black | 28 450 625-33 |
|  | Brushed Bronze | 28 450 625-42 |
|  | Aluminum | 28 450 625-45 |
|  | Brushed Champagne (22kt Gold) | 28 450 625-46 |
|  | Champagne (22kt Gold) | 28 450 625-47 |
|  | Brushed Chrome | 28 450 625-93 |
|  | Brushed Dark Platinum | 28 450 625-99 |



Flow rate chart



Codes & Standards

| | |
|---------------------------|--------------------------------|
| Scottish Water Byelaws | UK Water Supply Regulations |
|---------------------------|--------------------------------|



Wall elbow - Brushed Light Gold

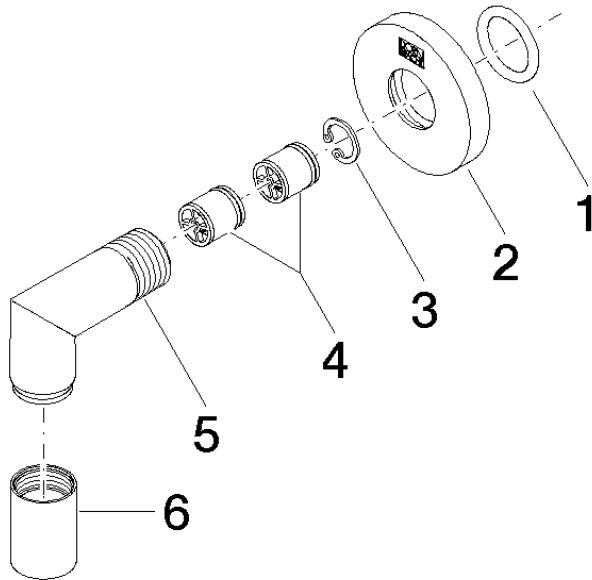
SERIES SPECIFIC

28 450 625 Product version from 7/6/2018

Certificates and sustainability

WRAS_240702

Parts for other finishes can be found here: Chrome



Spare parts list

| Number | Item Number | Designation | Number of units | Lead time |
|--------|--------------------|---------------------|-----------------|-----------|
| 2 | 09 27 22 503-27 | rosette | 1.00 | 60 |
| 4 | 90 23 01 141 00 90 | back-flow preventer | 2.00 | 2 |
| 6 | 90 21 02 069 00-27 | cover | 1.00 | 30 |
| 3 | 09 16 01 014 90 | ring | 1.00 | 2 |
| 5 | 09 11 03 036-27 | connection | 1.00 | 60 |
| 1 | 90 14 10 026 00 90 | seal | 1.00 | 2 |