





LULU Wall elbow - Chrome

LULU

28 450 710 Product version up to 7/6/2018



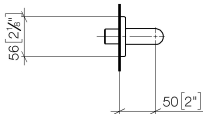
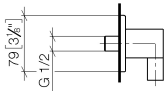
- 3/8" Shower outlet
 - Flange 3-1/8" x 2-1/8"
 - 1/2" connection
- Internal backflow preventer.**
- Internal backflow preventer.

	Chrome	28 450 710-00
	Brushed Platinum	28 450 710-06

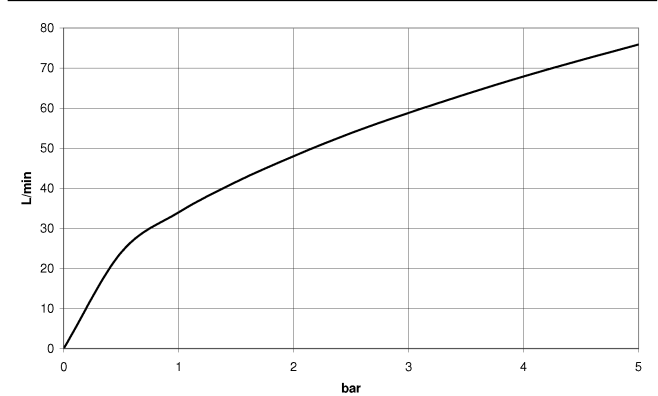
Required article

	Rough-in adapter -	35 080 970-90 0010
---	---------------------------	-----------------------

mm [inches]



Flow rate chart



Codes & Standards

ASME A112.18.1	cUPC	EN 1717	Scottish Water Byelaws
----------------	------	---------	------------------------

UK Water Supply Regulations



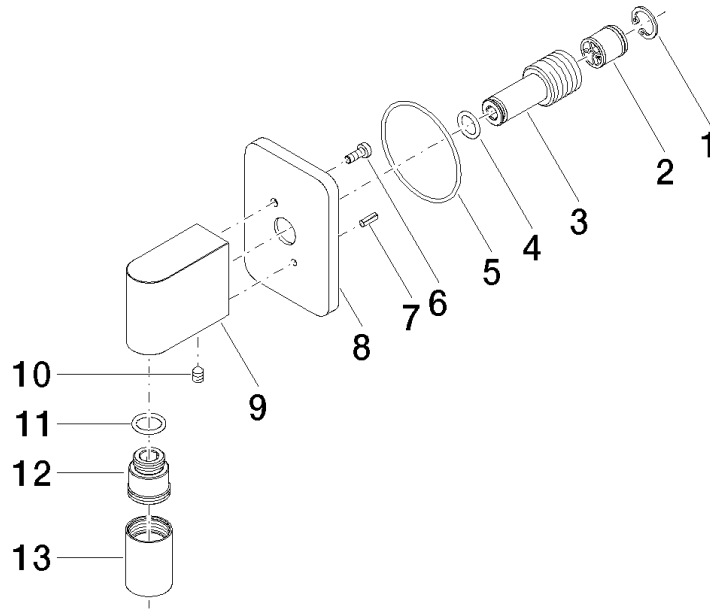
LULU Wall elbow - Chrome

LULU

28 450 710 Product version up to 7/6/2018

Certificates and sustainability

Belgaqua_21-381-2 WRAS_2310 WRAS_1807 IAPMO_4976



Spare parts list

Number	Item Number	Designation	Number of units	Lead time
7	09 31 11 026 90	pin	1.00	2
9	09 11 03 026 20-00	connection	1.00	60
6	09 30 30 054 90	screw	1.00	2
10	09 31 11 005 90	pin	1.00	2
3	09 24 03 116 20 90	nipple	1.00	2
4	09 14 10 008 90	seal	1.00	2
12	09 24 03 107 20 90	nipple	1.00	2
5	09 14 10 142 90	seal	1.00	2
1	09 16 01 014 90	ring	1.00	2
8	09 27 71 002-00	rosette	1.00	10
2	90 23 01 040 00 90	back-flow preventer	1.00	2
11	90 14 10 077 00 90	seal	1.00	2
13	90 21 02 069 00-00	cover	1.00	10