

28 450 845

Product version from 3/2/2021




- 3/8" Shower outlet
 - Flange 2-3/8" x 3-1/8"
 - 1/2" connection

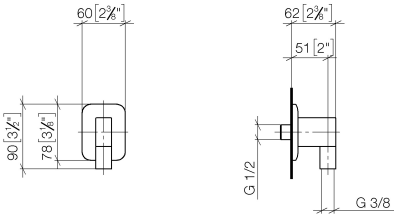
Internal backflow preventer.

Internal backflow preventer.

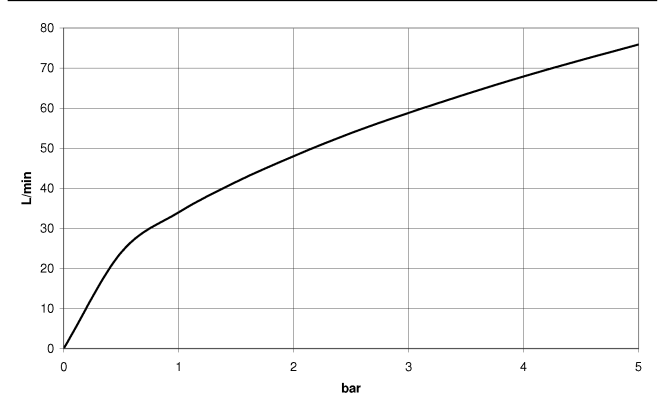
	Brushed Dark Platinum	28 450 845-99
	Chrome	28 450 845-00
	Brushed Platinum	28 450 845-06
	Dark Chrome	28 450 845-19
	Light gold	28 450 845-26
	Brushed Light Gold	28 450 845-27
	Matte Black	28 450 845-33
	Brushed Bronze	28 450 845-42
	Brushed Chrome	28 450 845-93

Required article

	Rough-in adapter -	35 080 970-90 0010
---	--------------------	--------------------



Flow rate chart



Codes & Standards

Scottish Water Byelaws	UK Water Supply Regulations
---------------------------	--------------------------------



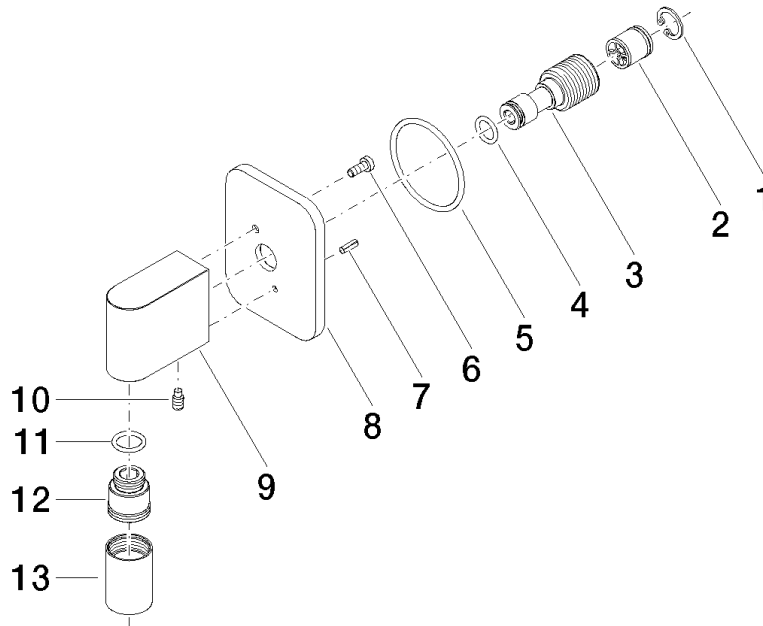
LISSE Wall elbow - Brushed Dark Platinum

LISSE

28 450 845 Product version from 3/2/2021

Certificates and sustainability

WRAS_2310



Spare parts list

Number	Item Number	Designation	Number of units	Lead time
2	90 23 01 141 00 90	back-flow preventer	1.00	2
7	09 31 11 026 90	pin	1.00	2
5	09 14 10 142 90	seal	1.00	2
4	09 14 10 008 90	seal	1.00	2
6	09 30 30 054 90	screw	1.00	2
3	09 24 03 116 20 90	nipple	1.00	2
12	09 24 03 107 20 90	nipple	1.00	2
1	09 16 01 014 90	ring	1.00	2
8	09 27 84 021-99	rosette	1.00	60
11	90 14 10 077 00 90	seal	1.00	2
13	90 21 02 069 00-99	cover	1.00	20
10	09 31 11 005 90	pin	1.00	2
9	09 11 03 046-99	connection	1.00	20