
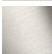




- Ø 3-5/8"
- 3-way adjustable: COMPACT RAIN, COMPACT SOFT FLOW, COMPACT AQUAPRESSURE FLOW, flow rate max. 1.8 gpm (at 3 bar)
- Function from: 1.3 gpm
- Descaling system

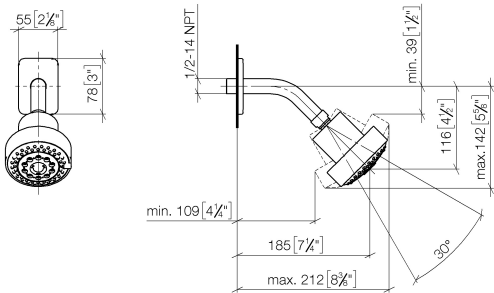
Technical data:

- 7-7/8" Projection
- Ball-joint pivotable through 30°
- Flange 3-1/8" x 2-1/8"
- 1/2" connection

	Chrome	28 508 710-00 0010
	Brushed Platinum	28 508 710-06 0010

28 508 710    Product version up to 5/15/2020

mm [inches]



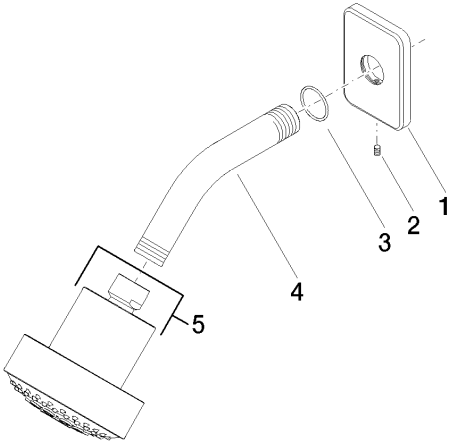
Codes & Standards

ASME A112.18.1	California Energy Commission (CEC)	cUPC	DIN 4109
EPA WaterSense	ISO 3822	Ü-Zeichen	WaterSense

Certificates and sustainability

LGA_38	IAPMO_4976	IAPMO_11777
--------	------------	-------------

Parts for other  
finishes can be found  
here: [Brushed](#)  
[Platinum](#)



### Spare parts list

Number	Item Number	Designation	Number of units	Lead time
5	04 12 11 110 30-00	shower	1.00	10
2	09 31 11 048 90	pin	1.00	2
3	09 14 10 098 90	seal	1.00	2
4	09 11 03 011-00	connection	1.00	10
1	09 27 71 027-00	rosette	1.00	10