

Body spray without diverter FlowReduce - Dark Chrome

28 518 782 Product version from 3/10/2014



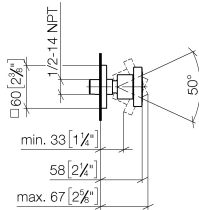
- Ø 2-1/8"
- swivels 25°
- Stream: Rain
- Descaling system
- Flange 2-3/8" x 2-3/8"
- 1/2" connection
- Water flow rate limited to max. 1.3 gpm
- This product can help a building meet the requirements of Green Building Rating Systems, e.g. LEED®, BREEAM®, DGNB

	Dark Chrome	28 518 782-19
	Chrome	28 518 782-00
	Brushed Platinum	28 518 782-06
	Platinum	28 518 782-08
	Brushed Light Gold	28 518 782-27
	Brushed Durabrass (23kt Gold)	28 518 782-28
	Matte Black	28 518 782-33
	Brushed Champagne (22kt Gold)	28 518 782-46
	Champagne (22kt Gold)	28 518 782-47
	Brushed Chrome	28 518 782-93
	Brushed Dark Platinum	28 518 782-99

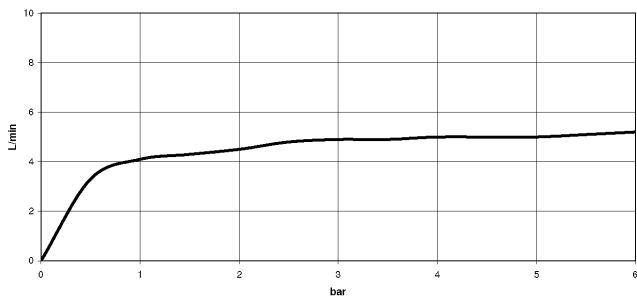
Body spray without diverter FlowReduce - Dark Chrome

28 518 782 Product version from 3/10/2014

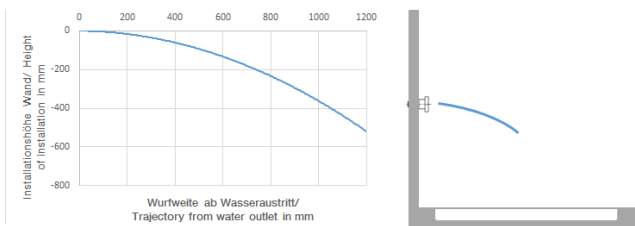
mm [inches]



Flow rate chart



Trajectory length diagram



Codes & Standards

ASME A112.18.1	ASME A112.18.1/CSA B125.1	California Energy Commission (CEC)	cUPC
DIN 4109	ISO 3822	Scottish Water Byelaws	UK Water Supply Regulations

Ü-Zeichen



Body spray without diverter FlowReduce - Dark Chrome

28 518 782 Product version from 3/10/2014

Certificates

LGA_38

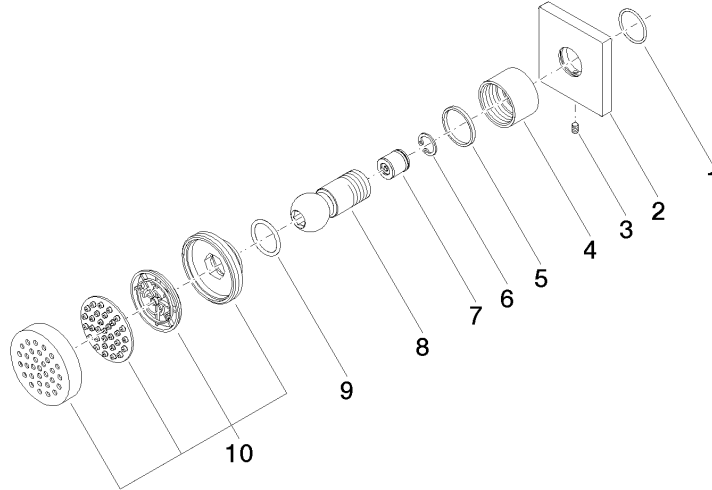
IAPMO_4976

WRAS_240602

Body spray without diverter FlowReduce - Dark Chrome

28 518 782 Product version from 3/10/2014

Parts for other finishes can be found here: [Chrome](#)



Spare parts list

Number	Item Number	Designation	Number of units	Lead time
1	09 14 10 098 90	seal	1	2
2	09 27 98 003-19	rosette	1	60
3	09 31 11 048 90	pin	1	2
4	09 23 30 026-19	nut	1	20
5	09 14 15 010 90	ring	1	2
6	09 16 01 014 90	ring	1	2
7	09 23 01 048 90	back-flow preventer	1	2
8	09 21 40 016-19	connection	1	20
9	09 14 10 015 90	seal	1	2
10	90 12 05 027 00-19	casing (completely)	1	20