

Body spray without diverter FlowReduce - Platinum

SERIES SPECIFIC

28 518 979 Product version from 4/1/2024



- Ø 2-1/8"
- swivels 25°
- HORIZONTAL RAIN, flow rate max. 1.3 gpm (at 3 bar)
- Descaling system
- Flange diameter 2-1/8"
- 1/2" connection
- This product can help a building meet the requirements of Green Building Rating Systems, e.g. LEED®, BREEAM®, DGNB

	Platinum	28 518 979-08
	Chrome	28 518 979-00
	Brushed Platinum	28 518 979-06
	Durabrass (23kt Gold)	28 518 979-09
	Dark Chrome	28 518 979-19
	Light gold	28 518 979-26
	Brushed Light Gold	28 518 979-27
	Brushed Durabrass (23kt Gold)	28 518 979-28
	Matte Black	28 518 979-33
	Brushed Bronze	28 518 979-42
	Brushed Champagne (22kt Gold)	28 518 979-46
	Champagne (22kt Gold)	28 518 979-47
	Brushed Chrome	28 518 979-93
	Brushed Dark Platinum	28 518 979-99

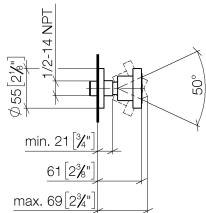
Required article

Rough-in adapter -

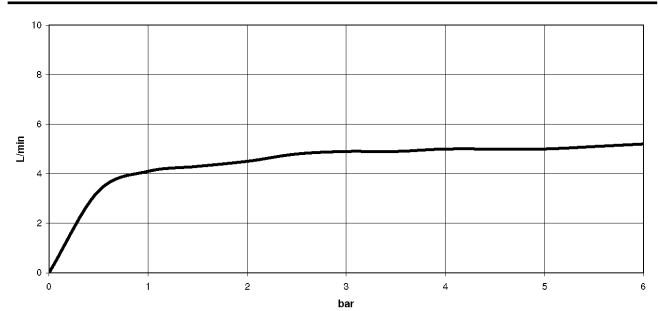
35 080 970-90  
0010



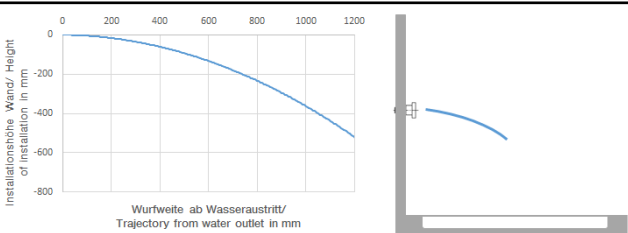
mm [inches]



Flow rate chart



Trajectory length diagram



Codes & Standards

ASME A112.18.1	California Energy Commission (CEC)	cUPC	DIN 4109
ISO 3822	Scottish Water Byelaws	UK Water Supply Regulations	Ü-Zeichen



Body spray without diverter FlowReduce - Platinum

SERIES SPECIFIC

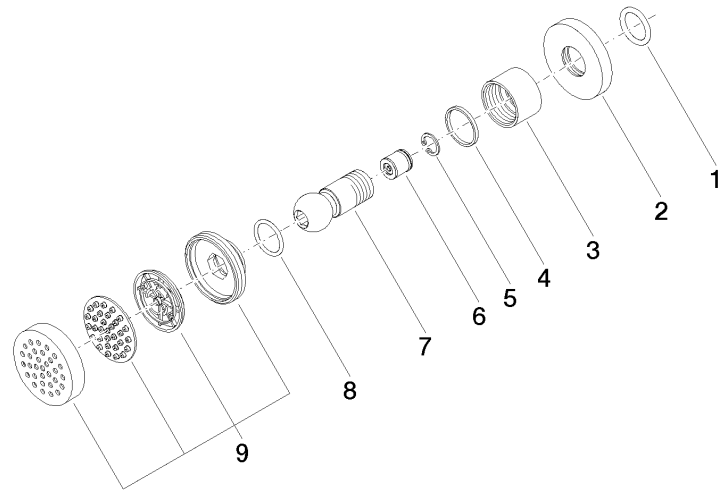
28 518 979 Product version from 4/1/2024

Certificates and sustainability

LGA\_38

IAPMO\_4976

WRAS\_240602



### Spare parts list

Number	Item Number	Designation	Number of units	Lead time
3	09 23 30 026-08	nut	1.00	40
6	09 23 01 048 90	back-flow preventer	1.00	2
7	09 21 40 016-08	connection	1.00	40
4	09 14 15 010 90	ring	1.00	2
8	09 14 10 015 90	seal	1.00	2
9	90 12 05 027 00-08	casing ( completely )	1.00	40
5	09 16 01 014 90	ring	1.00	2
1	90 14 10 026 00 90	seal	1.00	2
2	09 27 22 019-08	rosette	1.00	40