









Body spray without diverter FlowReduce - Brushed Dark Brass

SERIES SPECIFIC

28 518 979 Product version from 4/1/2024



- Ø 2-1/8"
- swivels 25°
- HORIZONTAL RAIN, flow rate max. 1.3 gpm (at 3 bar)
- Descaling system
- Flange diameter 2-1/8"
- 1/2" connection
- This product can help a building meet the requirements of Green Building Rating Systems, e.g. LEED®, BREEAM®, DGNB

	Brushed Dark Brass	28 518 979-39
	Chrome	28 518 979-00
	Brushed Platinum	28 518 979-06
	Platinum	28 518 979-08
	Durabrass (23kt Gold)	28 518 979-09
	Dark Chrome	28 518 979-19
	Light gold	28 518 979-26
	Brushed Light Gold	28 518 979-27
	Brushed Durabrass (23kt Gold)	28 518 979-28
	Matte Black	28 518 979-33
	Brushed Bronze	28 518 979-42
	Brushed Champagne (22kt Gold)	28 518 979-46
	Champagne (22kt Gold)	28 518 979-47
	Brushed Chrome	28 518 979-93
	Brushed Dark Platinum	28 518 979-99



Flow rate chart



Trajectory length diagram



Codes & Standards

California Energy Commission (CEC)	DIN 4109	ISO 3822	Scottish Water Byelaws
UK Water Supply Regulations	Ü-Zeichen		



Body spray without diverter FlowReduce - Brushed Dark Brass

SERIES SPECIFIC

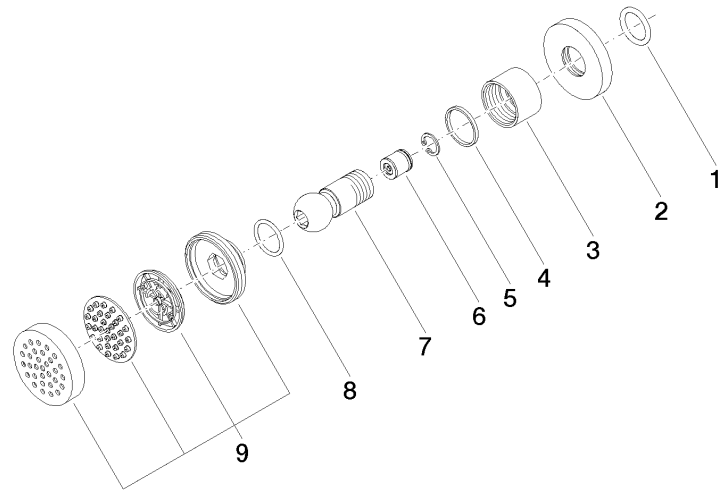
28 518 979 Product version from 4/1/2024

Certificates and sustainability

LGA_38

WRAS_240602

Parts for other
finishes can be found
here: [Chrome](#)



Spare parts list

Number	Item Number	Designation	Number of units	Lead time
4	09 14 15 010 90	ring	1.00	2
8	09 14 10 015 90	seal	1.00	2
5	09 16 01 014 90	ring	1.00	2
7	09 21 40 016-39	connection	1.00	60
9	90 12 05 027 00-39	casing (completely)	1.00	30
1	90 14 10 026 00 90	seal	1.00	2
6	09 23 01 048 90	back-flow preventer	1.00	2
2	09 27 22 019-39	rosette	1.00	60
3	09 23 30 026-39	nut	1.00	60