

Rain shower wall-mounted 11-3/4" x 9-1/2" - Platinum

SERIES SPECIFIC

28 765 980 Product version from 3/13/2017



- 17-3/4" Projection
- PURE RAIN, flow rate max. 1.8 gpm (at 3 bar)
- Function from: 1.6 gpm
- Descaling system
- 11-3/4" x 9-1/2" Rain showerhead
- Flange 2-3/8" x 2-3/8"
- 1/2" connection
- with drip prevention
- This product reduces water consumption by 28% (compared to requirements of EPA Act '92)
- This product contributes to meeting the requirements of the LEED® Green Building Rating
- This product can help a building meet the requirements of Green Building Rating Systems, e.g. LEED®, BREEAM®, DGNB

	Platinum	28 765 980-08 0010
	Chrome	28 765 980-00 0010
	Brushed Platinum	28 765 980-06 0010
	Dark Chrome	28 765 980-19 0010
	Brushed Light Gold	28 765 980-27 0010
	Brushed Durabronze (23kt Gold)	28 765 980-28 0010
	Matte Black	28 765 980-33 0010
	Brushed Champagne (22kt Gold)	28 765 980-46 0010
	Champagne (22kt Gold)	28 765 980-47 0010
	Brushed Chrome	28 765 980-93 0010
	Brushed Dark Platinum	28 765 980-99 0010

Required article



Concealed wall elbow -

- Max. rough in depth 6-3/8"
- Min. rough in depth 3-1/2"

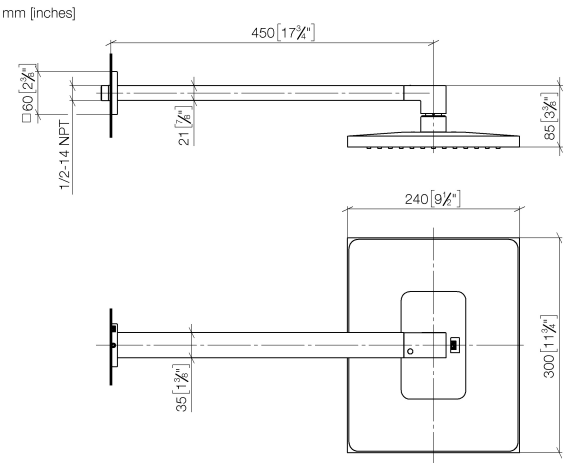
35 085 970-90
0010


Rain shower wall-mounted 11-3/4" x 9-1/2" - Platinum

SERIES SPECIFIC

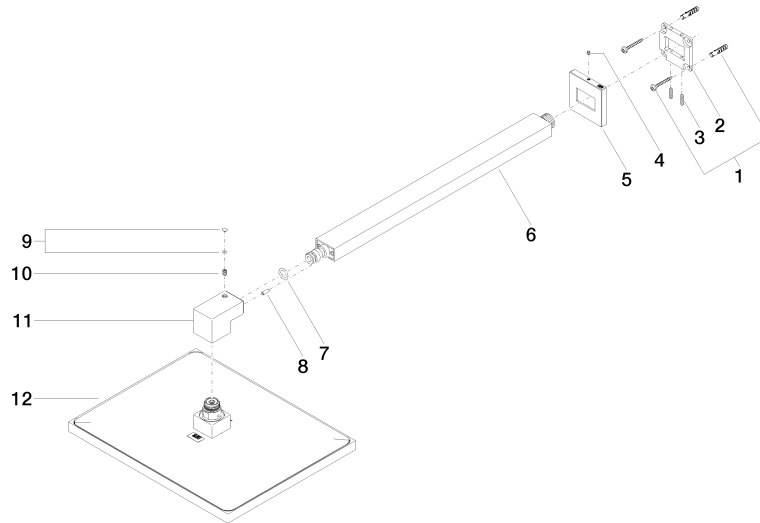
28 765 980

Product version from 3/13/2017



Codes & Standards			
ASME A112.18.1	California Energy Commission (CEC)	cUPC	EPA WaterSense
WaterSense			

Certificates and sustainability	
IAPMO_4976	IAPMO_11777



Spare parts list

Number	Item Number	Designation	Number of units	Lead time
12	04 12 05 063 10-08	shower	1.00	40
2	09 30 11 160 90	disc	1.00	2
5	09 27 98 016-08	rosette	1.00	40
1	04 30 31 032 00 90	fixing set	1.00	2
3	09 31 11 084 90	pin	2.00	2
4	09 31 11 099 90	pin	1.00	2
9	90 31 20 087 00-08	plug	1.00	40
10	09 31 11 036 90	pin	1.00	2
6	04 28 22 249 00-08	pipe	1.00	40
11	09 17 01 180-08	connection	1.00	40
8	09 31 11 040 90	pin	1.00	2
7	90 14 10 011 00 90	seal	1.00	2