



TARA Two-way diverter for deck-mounted tub installation - Brushed Platinum

TARA

29 140 892    Product version from 6/30/2015

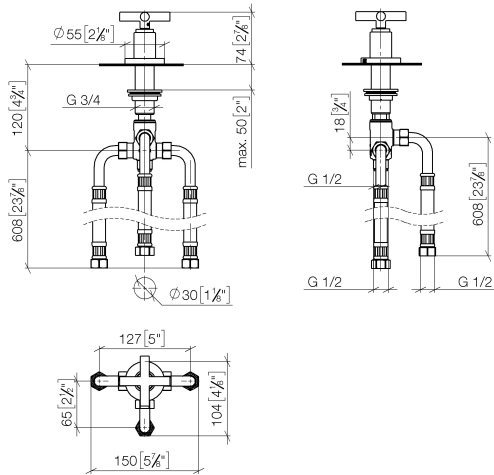


- Integrated diverter
  - 1-1/4" hole diameter
  - Flange diameter 2-1/8"
  - 1/2" connection
  - Water flow rate limited to max. 17.1 gpm
- (ADA)

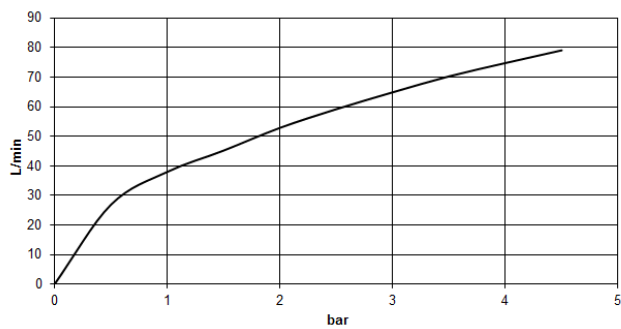
	Brushed Platinum	29 140 892-06
	Chrome	29 140 892-00
	Platinum	29 140 892-08
	Dark Chrome	29 140 892-19
	Brushed Durabrass (23kt Gold)	29 140 892-28
	Matte Black	29 140 892-33
	Brushed Dark Brass	29 140 892-39
	Brushed Bronze	29 140 892-42
	Brushed Champagne (22kt Gold)	29 140 892-46
	Champagne (22kt Gold)	29 140 892-47
	Brushed Chrome	29 140 892-93
	Brushed Dark Platinum	29 140 892-99

29 140 892 Product version from 6/30/2015

mm [inches]



### Flow rate chart



### Codes & Standards

ASME A112.18.1	California Energy Commission (CEC)	cUPC	DIN 4109
ISO 3822	Scottish Water Byelaws	UK Water Supply Regulations	Ü-Zeichen



## TARA Two-way diverter for deck-mounted tub installation - Brushed Platinum

---

TARA

29 140 892 Product version from 6/30/2015

### Certificates and sustainability

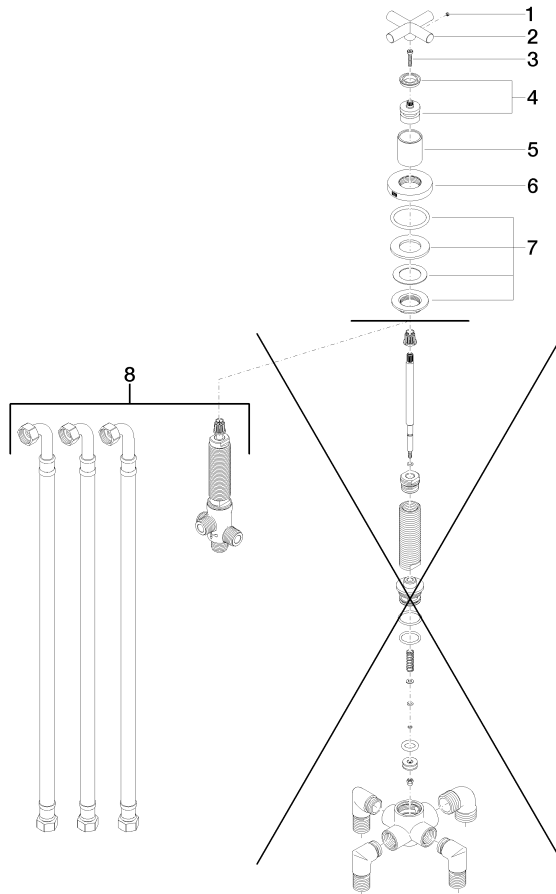
---

WRAS\_1911

LGA\_29

IAPMO\_4976

Parts for other  
finishes can be found  
here: [Chrome](#)



## Spare parts list

Number	Item Number	Designation	Number of units	Lead time
2	09 20 89 011-06	handle	1.00	10
4	90 12 12 007 00-06	base	1.00	10
1	09 31 11 055 90	pin	1.00	2
6	09 27 89 102-06	rosette	1.00	10
7	04 23 10 004 03 90	fixing set	1.00	2
8	90 17 09 051 00 90	diverter	1.00	2
5	09 21 02 140-06	sleeve	1.00	10
3	90 30 30 075 00 90	screw	1.00	2