



Two-way diverter for deck-mounted tub installation - Chrome

SERIES SPECIFIC

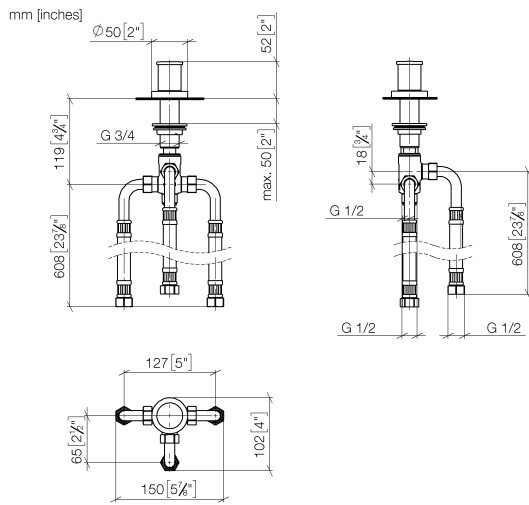
29 140 979 Product version from 6/30/2015



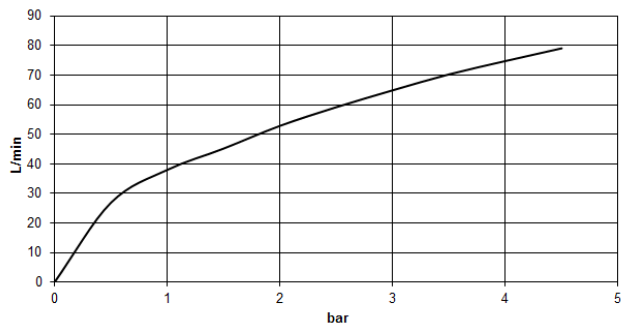
- Integrated diverter
- 1-1/4" hole diameter
- Flange diameter 2"
- 1/2" connection
- Water flow rate limited to max. 17.1 gpm

	Chrome	29 140 979-00
	Brushed Platinum	29 140 979-06
	Platinum	29 140 979-08
	Dark Chrome	29 140 979-19
	Brushed Durabrass (23kt Gold)	29 140 979-28
	Matte Black	29 140 979-33
	Brushed Dark Brass	29 140 979-39
	Brushed Bronze	29 140 979-42
	Brushed Champagne (22kt Gold)	29 140 979-46
	Champagne (22kt Gold)	29 140 979-47
	Brushed Chrome	29 140 979-93
	Brushed Dark Platinum	29 140 979-99

29 140 979 Product version from 6/30/2015



Flow rate chart



Codes & Standards

California Energy Commission (CEC)	DIN 4109	ISO 3822	Scottish Water Byelaws
UK Water Supply Regulations	Ü-Zeichen		



Two-way diverter for deck-mounted tub installation - Chrome

SERIES SPECIFIC

29 140 979 Product version from 6/30/2015

Certificates and sustainability

WRAS_1911 LGA_29

Two-way diverter for deck-mounted tub installation - Chrome

SERIES SPECIFIC

29 140 979 Product version from 6/30/2015

Parts for other
finishes can be found
here: Brushed
Platinum



Spare parts list

Number	Item Number	Designation	Number of units	Lead time
1	09 20 71 003-00	handle	1.00	10
9	09 23 10 004 90	nut	1.00	2
4	09 16 01 012-00	ring	1.00	10
7	09 14 05 014 90	seal	1.00	2
2	90 30 30 014 00 90	screw	1.00	2
5	09 27 97 013-00	rosette	1.00	10
8	09 14 40 002 90	seal	1.00	2
10	90 17 09 051 00 90	diverter	1.00	2
3	09 20 71 002-00	handle	1.00	10
6	09 14 10 030 90	seal	1.00	2