



Two-way diverter for deck-mounted tub installation - Champagne (22kt Gold)

SERIES SPECIFIC

29 140 979 Product version from 6/30/2015

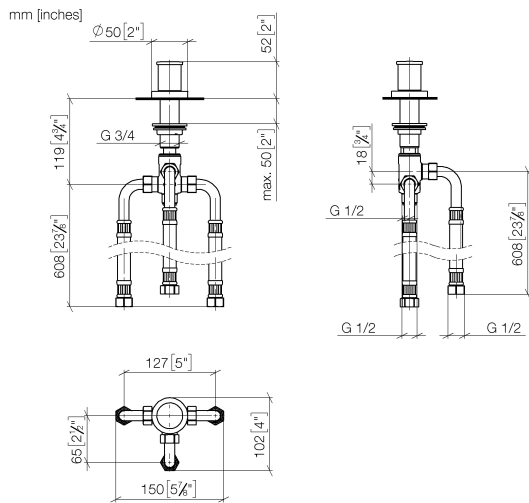


- Integrated diverter
- 1-1/4" hole diameter
- Flange diameter 2"
- 1/2" connection
- Water flow rate limited to max. 17.1 gpm

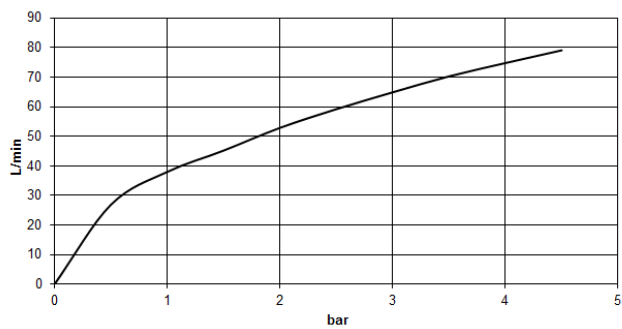
	Champagne (22kt Gold)	29 140 979-47
	Chrome	29 140 979-00
	Brushed Platinum	29 140 979-06
	Platinum	29 140 979-08
	Dark Chrome	29 140 979-19
	Brushed Durabronze (23kt Gold)	29 140 979-28
	Matte Black	29 140 979-33
	Brushed Dark Brass	29 140 979-39
	Brushed Bronze	29 140 979-42
	Brushed Champagne (22kt Gold)	29 140 979-46
	Brushed Chrome	29 140 979-93
	Brushed Dark Platinum	29 140 979-99

Two-way diverter for deck-mounted tub installation - Champagne (22kt Gold) SERIES SPECIFIC

29 140 979 Product version from 6/30/2015



Flow rate chart



Codes & Standards

California Energy
Commission
(CEC)

DIN 4109

ISO 3822

Ü-Zeichen



Two-way diverter for deck-mounted tub installation - Champagne (22kt Gold) SERIES SPECIFIC

29 140 979 Product version from 6/30/2015

Certificates and sustainability

LGA_29

