



META Single-lever tub mixer for deck-mounted tub installation - Brushed Light Gold

META

29 300 660 Product version from 7/1/2023



- 1-3/8" hole diameter
- Water flow rate limited to max. 9.4 gpm

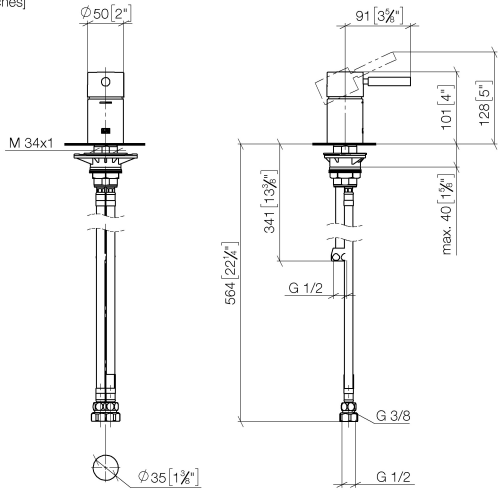
NOTE: Local building codes may require the use of an anti-scald device. Please refer to remote pressure balance valve (35 914 970 90) (ADA)

	Brushed Light Gold	29 300 660-27
	Chrome	29 300 660-00
	Brushed Platinum	29 300 660-06
	Dark Chrome	29 300 660-19
	Light gold	29 300 660-26
	Matte Black	29 300 660-33
	Brushed Dark Brass	29 300 660-39
	Brushed Bronze	29 300 660-42
	Brushed Champagne (22kt Gold)	29 300 660-46
	Champagne (22kt Gold)	29 300 660-47
	Brushed Chrome	29 300 660-93
	Brushed Dark Platinum	29 300 660-99

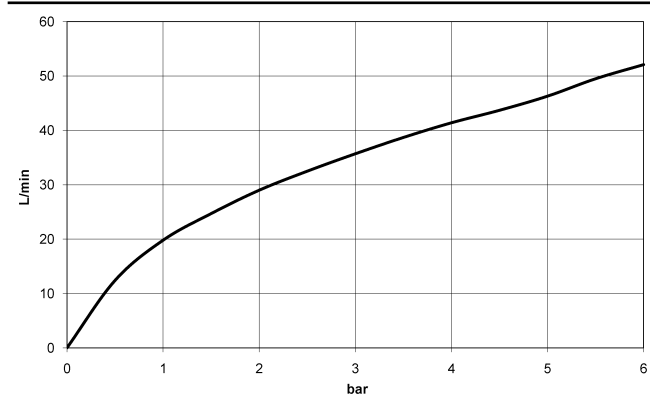
**META Single-lever tub mixer for deck-mounted tub installation - Brushed Light Gold**

META

29 300 660 Product version from 7/1/2023  
mm [inches]



Flow rate chart



Codes & Standards

ADA

Scottish Water  
Byelaws

UK Water Supply  
Regulations



## META Single-lever tub mixer for deck-mounted tub installation - Brushed Light Gold

META

---

29 300 660 Product version from 7/1/2023

Certificates and sustainability

---

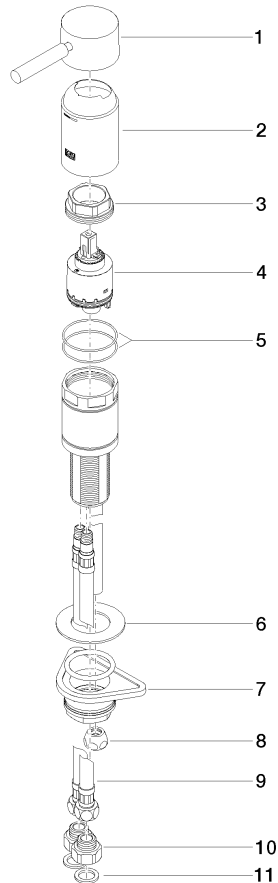
WRAS\_250502

## META Single-lever tub mixer for deck-mounted tub installation - Brushed Light Gold

META

29 300 660 Product version from 7/1/2023

Parts for other  
finishes can be found  
here: [Chrome](#)



### Spare parts list

Number	Item Number	Designation	Number of units	Lead time
10	09 24 03 185-00	nipple	2.00	10
6	09 30 11 060 90	disc	1.00	2
7	04 23 10 044 02 90	fixing set	1.00	2
11	09 14 05 004 90	seal	2.00	2
1	90 20 66 005 00-27	handle	1.00	30
5	09 14 10 201 90	seal	1.00	2
4	90 15 05 039 00 90	cartridge	1.00	2
8	04 23 30 041 00 90	threaded connector	1.00	2
9	04 30 04 021 00 90	hose	1.00	2
3	09 24 04 448 90	nut	1.00	2
2	09 28 30 037-27	cover	1.00	60