



VAIA Pillar-tap, wall-mounted cold water only without drain - Platinum

30 010 809



- 6" Projection
- Rigid spout
- Round aerated stream
- Adapter, male thread 3/4"
- 1-3/8" hole diameter
- Flange diameter 2-3/8"
- Water flow rate limited to max. 1.2 gpm
- lead-free
- This product can help a building meet the requirements of Green Building Rating Systems, e.g. LEED®, BREEAM®, DGNB

(ADA)

	Platinum	30 010 809-08 0010
	Chrome	30 010 809-00 0010
	Brushed Platinum	30 010 809-06 0010
	Dark Chrome	30 010 809-19 0010
	Brushed Durabronze (23kt Gold)	30 010 809-28 0010
	Brushed Bronze	30 010 809-42 0010
	Brushed Champagne (22kt Gold)	30 010 809-46 0010
	Champagne (22kt Gold)	30 010 809-47 0010
	Brushed Dark Platinum	30 010 809-99 0010

Recommended article



- Concealed wall elbow -**
- Min. rough in depth "
 - Max. rough in depth "

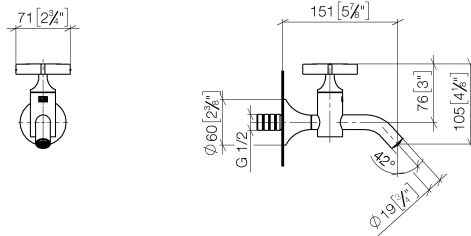
35 085 970-90
0010



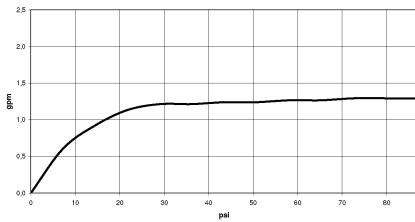
VAIA Pillar-tap, wall-mounted cold water only without drain - Platinum

30 010 809


mm [inches]



Flow rate chart



Codes & Standards

ASME A112.18.1	California Energy Commission (CEC)	cUPC	EPA WaterSense
NSF372	NSF61	WaterSense	



VAIA Pillar-tap, wall-mounted cold water only without drain - Platinum

30 010 809

Certificates

IAPMO_8834

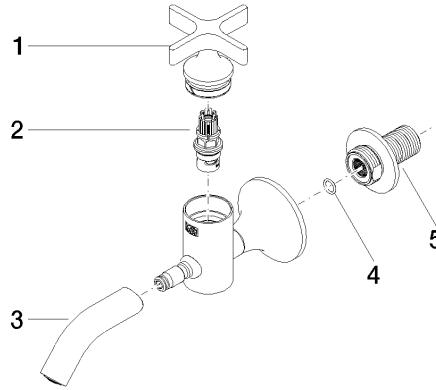
IAPMO_6397

IAPMO_N-4976

IAPMO_4976 (

VAIA Pillar-tap, wall-mounted cold water only without drain - Platinum

30 010 809



Spare parts list

Number	Item Number	Designation	Number of units	Lead time
1	90 20 66 025 00-08	handle	1	40
2	90 90 03 175 00 90	top	1	2
3	90 28 22 381 01-08	spout	1	40
4	90 14 10 060 00 90	seal	1	2
5	09 24 03 269 90	nipple	1	2