

30 010 809 Product version from 4/1/2025



- 6" Projection
- Rigid spout
- Round aerated stream
- Adapter, male thread 3/4"
- 1-3/8" hole diameter
- Flange diameter 2-3/8"
- Water flow rate limited to max. 1.2 gpm
- lead-free
- This product can help a building meet the requirements of Green Building Rating Systems, e.g. LEED®, BREEAM®, DGNB

(ADA)

	Dark Chrome	30 010 809-19 0010
	Chrome	30 010 809-00 0010
	Brushed Platinum	30 010 809-06 0010
	Platinum	30 010 809-08 0010
	Brushed Durabronze (23kt Gold)	30 010 809-28 0010
	Brushed Dark Brass	30 010 809-39 0010
	Brushed Bronze	30 010 809-42 0010
	Brushed Champagne (22kt Gold)	30 010 809-46 0010
	Champagne (22kt Gold)	30 010 809-47 0010
	Brushed Dark Platinum	30 010 809-99 0010

Recommended article

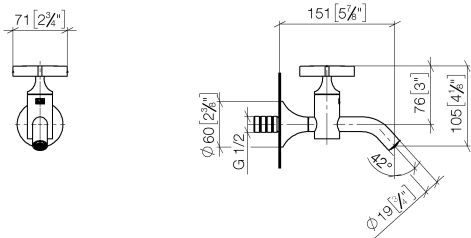


Concealed wall elbow -

- Min. rough in depth 3-1/2"
- Max. rough in depth 6-3/8"

35 085 970-90
0010

mm [inches]



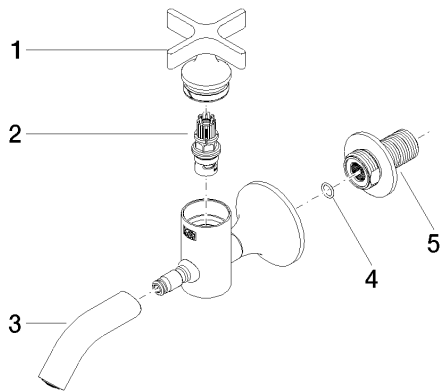
Codes & Standards

ADA	ASME A112.18.1	California Energy Commission (CEC)	cUPC
EPA WaterSense	NSF372	NSF61	WaterSense



Certificates and sustainability

IAPMO_6397	IAPMO_N-4976	IAPMO_8834	IAPMO_4976 (
------------	--------------	------------	--------------



Spare parts list

Number	Item Number	Designation	Number of units	Lead time
3	90 28 22 381 01-19	spout	1.00	20
5	09 24 03 269 90	nipple	1.00	2
2	90 90 03 175 00 90	top	1.00	2
1	90 20 66 025 00-19	handle	1.00	20
4	90 14 10 060 00 90	seal	1.00	2