



## VAIA Pillar-tap, wall-mounted cold water only without drain - Brushed Champagne (22kt Gold)

30 010 809



- 6" Projection
- Rigid spout
- Round aerated stream
- Adapter, male thread 3/4"
- 1-3/8" hole diameter
- Flange diameter 2-3/8"
- Water flow rate limited to max. 1.2 gpm
- lead-free
- This product can help a building meet the requirements of Green Building Rating Systems, e.g. LEED®, BREEAM®, DGNB

(ADA)

	Brushed Champagne (22kt Gold)	30 010 809-46 0010
	Chrome	30 010 809-00 0010
	Brushed Platinum	30 010 809-06 0010
	Platinum	30 010 809-08 0010
	Dark Chrome	30 010 809-19 0010
	Brushed Durabrass (23kt Gold)	30 010 809-28 0010
	Brushed Bronze	30 010 809-42 0010
	Champagne (22kt Gold)	30 010 809-47 0010
	Brushed Dark Platinum	30 010 809-99 0010

### Recommended article



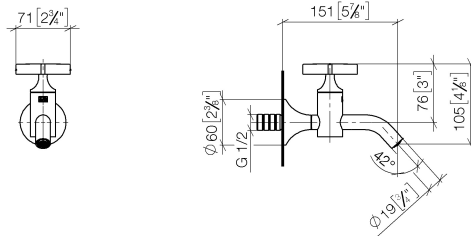
- Concealed wall elbow -**
- Min. rough in depth "
  - Max. rough in depth "

35 085 970-90  
0010

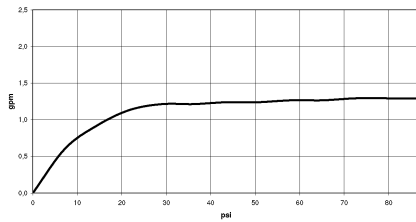


# VAIA Pillar-tap, wall-mounted cold water only without drain - Brushed Champagne (22kt Gold)

30 010 809  
mm [inches]



## Flow rate chart



## Codes & Standards

ASME A112.18.1

California Energy  
Commission  
(CEC)

cUPC

NSF372

NSF61



VAIA Pillar-tap, wall-mounted cold water only without drain - Brushed  
Champagne (22kt Gold)

---

30 010 809

Certificates

---

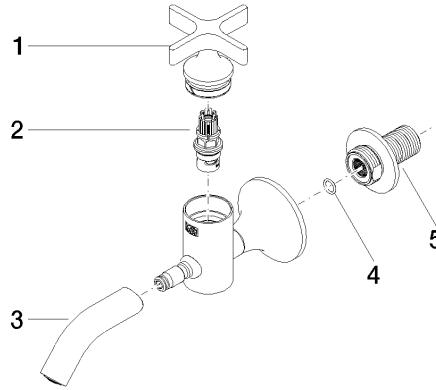
IAPMO\_6397

IAPMO\_N-4976

IAPMO\_4976 (

VAIA Pillar-tap, wall-mounted cold water only without drain - Brushed  
Champagne (22kt Gold)

30 010 809



Spare parts list

Number	Item Number	Designation	Number of units	Lead time
1	90 20 66 025 00-46	handle	1	30
2	90 90 03 175 00 90	top	1	2
3	90 28 22 381 01-46	spout	1	30
4	90 14 10 060 00 90	seal	1	2
5	09 24 03 269 90	nipple	1	2