

LOT BAR TAP Two-hole mixer with individual flanges - Brushed Platinum

LOT

32 805 680
Product version up to 5/10/2021




- 6-1/2" Projection
  - Swiveling spout 360°
  - Aerated stream
  - Total height 9"
  - 8-1/8" height to aerator/spout outlet
  - Individual flanges 2-1/8" x 2-1/8"
  - Spout hole diameter 1-3/8"
  - Single-lever mixer hole diameter 1-3/4"
  - 2 x pressure hose with 3/8" compression fitting
  - Water flow rate limited to max. 1.5 gpm
  - lead-free
  - This product can help a building meet the requirements of Green Building Rating Systems, e.g. LEED®, BREEAM®, DGNB

(ADA)

Flexible positioning of components.

	Brushed Platinum	32 805 680-06 0010
	Chrome	32 805 680-00 0010
	Platinum	32 805 680-08 0010
	Dark Chrome	32 805 680-19 0010
	Brushed Durabrass (23kt Gold)	32 805 680-28 0010
	Brushed Champagne (22kt Gold)	32 805 680-46 0010
	Champagne (22kt Gold)	32 805 680-47 0010
	Brushed Dark Platinum	32 805 680-99 0010


Recommended article



**Soap dispenser with flange - Brushed Platinum**

82 439 970-06

Recommended article



**AIR SWITCH operating button, trim parts only - Brushed Platinum**

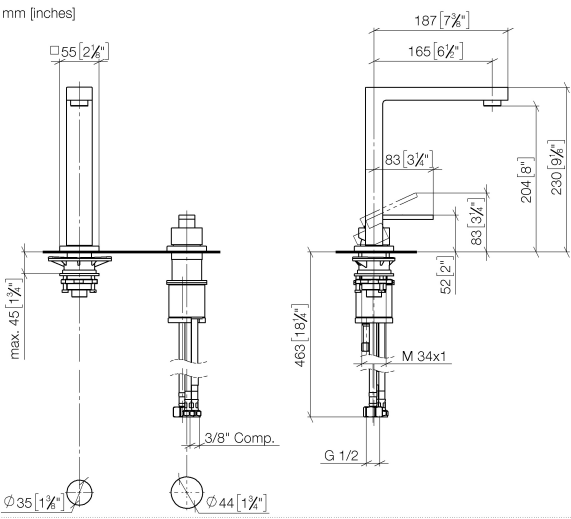
10 714 970-06



LOT BAR TAP Two-hole mixer with individual flanges - Brushed Platinum

LOT

32 805 680    Product version up to 5/10/2021



Codes & Standards

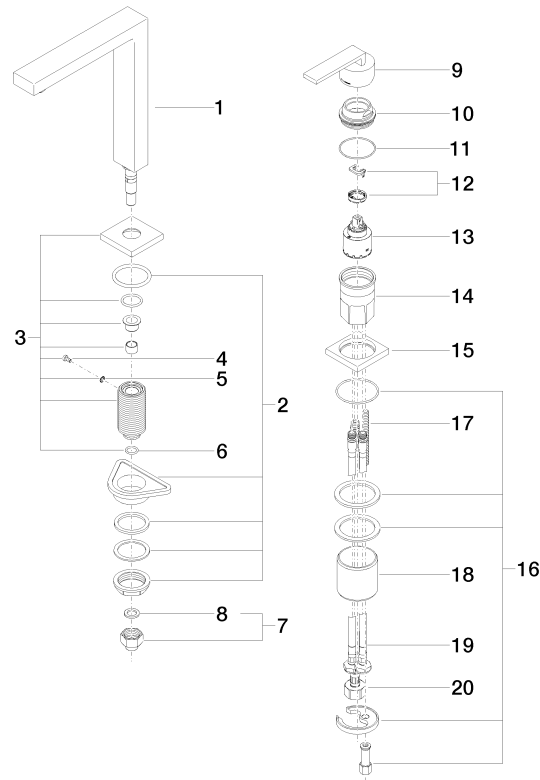
ADA	ASME A112.18.1	California Energy Commission (CEC)	cUPC
NSF372	NSF61		

Certificates and sustainability

IAPMO_N-4	IAPMO_6	IAPMO_4976 (
-----------	---------	--------------

32 805 680 Product version up to 5/10/2021

Parts for other  
finishes can be found  
here: [Chrome](#)



## Spare parts list

Number	Item Number	Designation	Number of units	Lead time
2	04 23 10 044 01 90	fixing set	1.00	2
18	09 18 40 079 90	sleeve	1.00	2
13	90 15 05 061 00 90	cartridge	1.00	60
10	09 24 04 142-06	nut	1.00	10
17	09 31 11 011 90	pin	1.00	2
5	09 30 11 028 90	disc	1.00	2
16	04 30 11 038 02 90	fixing set	1.00	2
4	09 30 30 057 90	screw	1.00	2
7	04 24 04 166 10 90	nipple	1.00	2
14	09 30 01 100 10 90	sleeve	1.00	2
20	04 30 04 019 00 90	hose	1.00	2
19	04 30 04 106 00 90	hose	2.00	2
3	90 27 78 023 00-06	rosette	1.00	10
11	09 14 10 037 90	seal	1.00	2
15	09 27 78 007-06	rosette	1.00	10
1	90 11 06 192 06-06	spout	1.00	10
9	90 20 78 040 00-06	handle	1.00	10
6	90 14 10 077 00 90	seal	1.00	2
12	90 28 10 148 00 90	accessories	1.00	2
8	90 14 20 002 00 90	seal	1.00	2