

LOT BAR TAP Two-hole mixer with individual flanges - Platinum

LOT

32 805 680 Product version up to 5/10/2021



- 6-1/2" Projection
 - Swiveling spout 360°
 - Aerated stream
 - Total height 9"
 - 8-1/8" height to aerator/spout outlet
 - Individual flanges 2-1/8" x 2-1/8"
 - Spout hole diameter 1-3/8"
 - Single-lever mixer hole diameter 1-3/4"
 - 2 x pressure hose with 3/8" compression fitting
 - Water flow rate limited to max. 1.5 gpm
 - lead-free
 - This product can help a building meet the requirements of Green Building Rating Systems, e.g. LEED®, BREEAM®, DGNB
- (ADA)
- Flexible positioning of components.

	Platinum	32 805 680-08 0010
	Chrome	32 805 680-00 0010
	Brushed Platinum	32 805 680-06 0010
	Dark Chrome	32 805 680-19 0010
	Brushed Durabronze (23kt Gold)	32 805 680-28 0010
	Brushed Champagne (22kt Gold)	32 805 680-46 0010
	Champagne (22kt Gold)	32 805 680-47 0010
	Brushed Dark Platinum	32 805 680-99 0010

Recommended article

AIR SWITCH operating button, trim parts only - Platinum

10 714 970-08



Recommended article

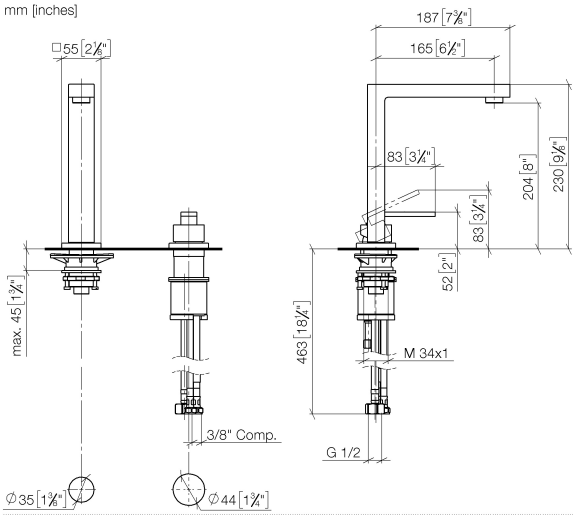
Soap dispenser with flange - Platinum

82 439 970-08



32 805 680

Product version up to 5/10/2021



Codes & Standards

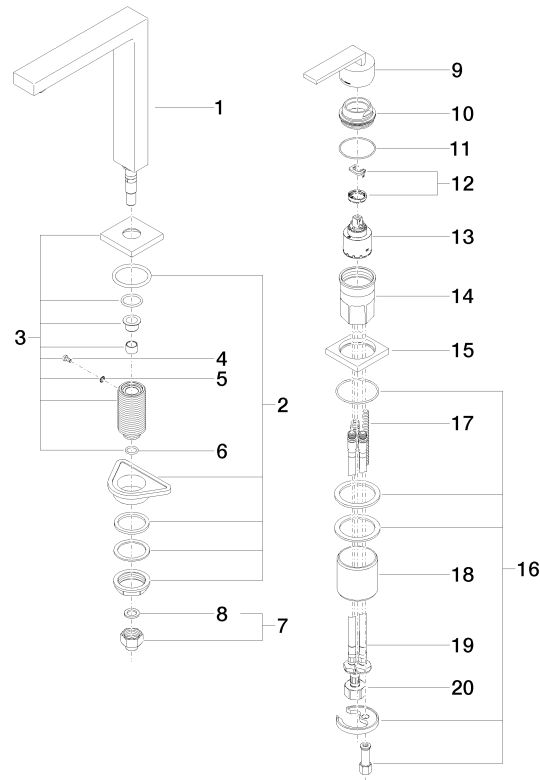
ADA	ASME A112.18.1	California Energy Commission (CEC)	cUPC
NSF372	NSF61		

Certificates and sustainability

IAPMO_N-4	IAPMO_6	IAPMO_4976 (
-----------	---------	--------------

32 805 680 Product version up to 5/10/2021

Parts for other
finishes can be found
here: [Chrome](#)



Spare parts list

Number	Item Number	Designation	Number of units	Lead time
1	90 11 06 192 06-08	spout	1.00	40
5	09 30 11 028 90	disc	1.00	2
9	90 20 78 040 00-08	handle	1.00	40
13	90 15 05 061 00 90	cartridge	1.00	60
3	90 27 78 023 00-08	rosette	1.00	40
19	04 30 04 106 00 90	hose	2.00	2
11	09 14 10 037 90	seal	1.00	2
7	04 24 04 166 10 90	nipple	1.00	2
18	09 18 40 079 90	sleeve	1.00	2
17	09 31 11 011 90	pin	1.00	2
20	04 30 04 019 00 90	hose	1.00	2
4	09 30 30 057 90	screw	1.00	2
16	04 30 11 038 02 90	fixing set	1.00	2
2	04 23 10 044 01 90	fixing set	1.00	2
14	09 30 01 100 10 90	sleeve	1.00	2
15	09 27 78 007-08	rosette	1.00	60
10	09 24 04 142-08	nut	1.00	60
8	90 14 20 002 00 90	seal	1.00	2
6	90 14 10 077 00 90	seal	1.00	2
12	90 28 10 148 00 90	accessories	1.00	2