

META SQUARE Two-hole mixer with individual flanges - Matte Black

META SQUARE

32 815 861    Product version from 10/1/2024



- 9-1/4" Projection
- Swiveling spout 360°
- Optional restricted swivel available with swivel limiter set 12 820 970 90
- Aerated stream
- Total height 13-1/4"
- Height to aerator/spout outlet 10-3/8"
- Individual flanges 2-3/8" x 2-3/8"
- Spout hole diameter 1-3/8"
- Single-lever mixer hole diameter 1-3/8"
- 2 x pressure hose with 3/8" compression fitting
- Water flow rate limited to max. 1.5 gpm
- lead-free
- This product can help a building meet the requirements of Green Building Rating Systems, e.g. LEED®, BREEAM®, DGNB

(ADA)

Flexible positioning of components.

	Matte Black	32 815 861-33 0010
	Chrome	32 815 861-00 0010
	Brushed Platinum	32 815 861-06 0010
	Platinum	32 815 861-08 0010
	Durabrass (23kt Gold)	32 815 861-09 0010
	Dark Chrome	32 815 861-19 0010
	Brushed Durabrass (23kt Gold)	32 815 861-28 0010
	Brushed Bronze	32 815 861-42 0010
	Brushed Champagne (22kt Gold)	32 815 861-46 0010
	Champagne (22kt Gold)	32 815 861-47 0010
	Brushed Chrome	32 815 861-93 0010
	Brushed Dark Platinum	32 815 861-99 0010

Recommended article

**Soap dispenser with flange - Matte Black** 82 444 970-33



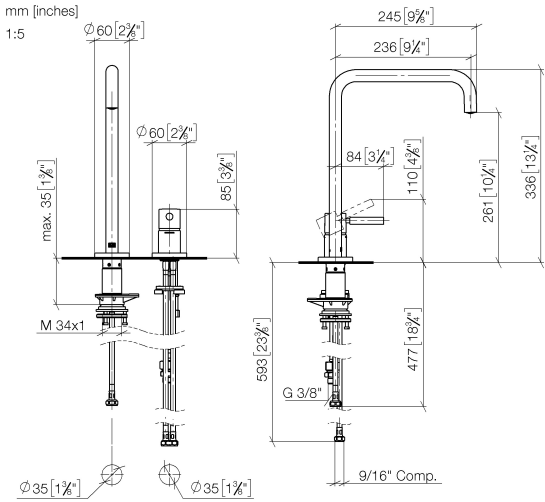
Recommended article

**AIR SWITCH operating button, trim parts only - Matte Black** 10 713 970-33



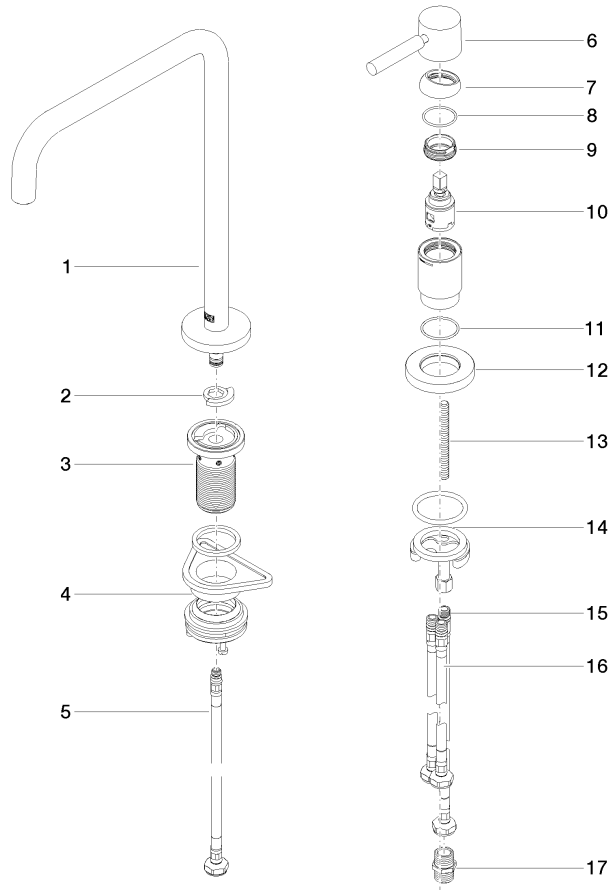
32 815 861

Product version from 10/1/2024



Codes & Standards			
ADA	ASME A112.18.1	California Energy Commission (CEC)	cUPC
NSF372	NSF61		

Certificates and sustainability		
IAPMO_6397	IAPMO_N-4976	IAPMO_4976 (



## Spare parts list

Number	Item Number	Designation	Number of units	Lead time
	10 90 15 05 042 00 90	cartridge	1.00	2
	11 09 14 10 110 90	seal	1.00	2
	16 04 30 04 107 00 90	hose	2.00	2
	7 09 28 30 026-33	cover	1.00	60
	3 90 30 01 299 00 90	shaft	1.00	2
	14 04 30 11 085 97 90	fixing set	1.00	2
	8 09 14 10 091 90	seal	1.00	2
	17 90 24 03 250 00 90	nipple	1.00	2
	6 90 20 66 003 00-33	handle	1.00	30
	9 09 24 04 266 90	nut	1.00	2
	12 09 27 97 040-33	rosette	1.00	60
	13 09 31 11 011 90	pin	1.00	2
	2 12 820 970 90	Swivel limiter set -	1.00	2
	4 04 23 10 044 08 90	fixing set	1.00	2
	5 04 30 04 100 00 90	hose	1.00	2
	1 90 28 22 288 00-33	spout	1.00	30
	15 04 30 04 104 00 90	hose	1.00	2