

META Single-lever tub mixer for wall-mounted installation without hand shower set - Brushed Light Gold

META

33 200 660 Product version from 7/1/2023



- 8" Projection
- Round aerator
- Integrated diverter
- 3/8" Shower outlet
- Flanges Ø 2-3/8"
- 1/2" connection
- Center to center 5-7/8" ± 5/8"
- Water flow rate limited to max. 3.7 gpm (ADA)

Internal backflow preventer.

NOTE: Local building codes may require the use of an anti-scald device. Please refer to remote pressure balance valve (35 914 970 90)

(ADA)

Internal backflow preventer.

NOTE: Local building codes may require the use of an anti-scald device. Please refer to remote pressure balance valve (35 914 970 90)

	Brushed Light Gold	33 200 660-27
	Chrome	33 200 660-00
	Brushed Platinum	33 200 660-06
	Dark Chrome	33 200 660-19
	Light gold	33 200 660-26
	Matte Black	33 200 660-33
	Brushed Bronze	33 200 660-42
	Brushed Champagne (22kt Gold)	33 200 660-46
	Champagne (22kt Gold)	33 200 660-47
	Brushed Chrome	33 200 660-93
	Brushed Dark Platinum	33 200 660-99

Required article

Rough-in adapter -

- Please order 2 adapters

35 080 970-90
0010



META Single-lever tub mixer for wall-mounted installation without hand shower set - Brushed Light Gold

META

33 200 660 Product version from 7/1/2023
mm [inches]



Flow rate chart



Codes & Standards

California Energy
Commission
(CEC)

DIN 4109

ISO 3822

Ü-Zeichen



META Single-lever tub mixer for wall-mounted installation without hand shower set - Brushed Light Gold

META

33 200 660 Product version from 7/1/2023

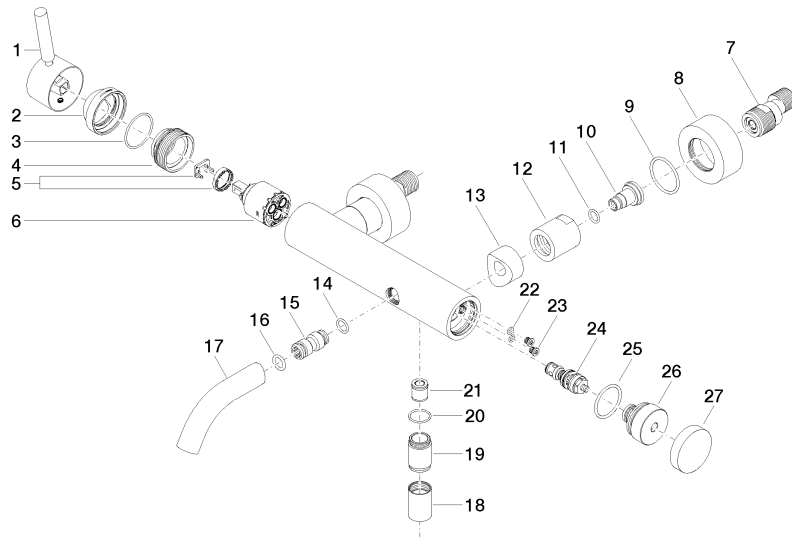
Certificates and sustainability

LGA_29

META Single-lever tub mixer for wall-mounted installation without hand shower set - Brushed Light Gold

META

33 200 660 Product version from 7/1/2023





META Single-lever tub mixer for wall-mounted installation without hand shower set - Brushed Light Gold

META

33 200 660 Product version from 7/1/2023

Spare parts list

Number	Item Number	Designation	Number of units	Lead time
5	90 28 10 148 00 90	accessories	1.00	2
4	09 24 04 296 90	nut	1.00	2
16	90 14 10 011 00 90	seal	1.00	2
15	09 24 04 043 90	nipple	1.00	2
13	09 18 40 059-27	sleeve	2.00	60
18	90 21 02 069 00-27	cover	1.00	30
19	09 24 03 115 20-27	nipple	1.00	60
25	09 14 10 101 90	seal	1.00	2
12	09 23 10 048-27	nut	2.00	60
27	09 20 62 031-27	handle	1.00	60
26	09 21 10 035 20-27	nipple	1.00	60
3	09 14 10 102 90	seal	1.00	2
24	90 31 09 032 00-27	diverter	1.00	30
21	90 23 01 141 00 90	back-flow preventer	1.00	2
17	90 11 06 213 00-27	spout	1.00	-
Spare part can no longer be ordered, please order the replacement item				
9	09 14 10 119 90	seal	2.00	2
6	90 15 05 064 00 90	cartridge	1.00	2
2	09 28 30 032-27	cover	1.00	60
10	09 29 05 005 20 90	nipple	2.00	60
22	09 14 10 001 90	seal	2.00	2
11	09 14 10 008 90	seal	2.00	2
1	90 20 66 007 00-27	handle	1.00	30
23	09 30 30 113 20 90	screw	2.00	2
8	09 27 62 004-27	rosette	2.00	60
14	09 14 10 003 90	seal	1.00	2
7	04 11 04 030 00 90	connection	2.00	2
20	90 14 10 032 00 90	seal	1.00	2