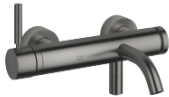




META Single-lever tub mixer for wall-mounted installation without hand shower set - Brushed Dark Platinum

META

33 200 660 Product version from 7/1/2023



- 8" Projection
- Round aerator
- Integrated diverter
- 3/8" Shower outlet
- Flanges Ø 2-3/8"
- 1/2" connection
- Center to center 5-7/8" ± 5/8"
- Water flow rate limited to max. 3.7 gpm (ADA)

Internal backflow preventer.

**NOTE: Local building codes may require the use of an anti-scald device. Please refer to remote pressure balance valve (35 914 970 90)**

(ADA)

Internal backflow preventer.

**NOTE: Local building codes may require the use of an anti-scald device. Please refer to remote pressure balance valve (35 914 970 90)**

	Brushed Dark Platinum	33 200 660-99
	Chrome	33 200 660-00
	Brushed Platinum	33 200 660-06
	Dark Chrome	33 200 660-19
	Light gold	33 200 660-26
	Brushed Light Gold	33 200 660-27
	Matte Black	33 200 660-33
	Brushed Bronze	33 200 660-42
	Brushed Champagne (22kt Gold)	33 200 660-46
	Champagne (22kt Gold)	33 200 660-47
	Brushed Chrome	33 200 660-93

Required article

- Rough-in adapter -** 35 080 970-90
- Please order 2 adapters 0010



# META Single-lever tub mixer for wall-mounted installation without hand shower set - Brushed Dark Platinum

META

33 200 660 Product version from 7/1/2023  
mm [inches]



Flow rate chart



## Codes & Standards

California Energy  
Commission  
(CEC)

DIN 4109

ISO 3822

Ü-Zeichen



## META Single-lever tub mixer for wall-mounted installation without hand shower set - Brushed Dark Platinum

---

META

33 200 660 Product version from 7/1/2023

Certificates and sustainability

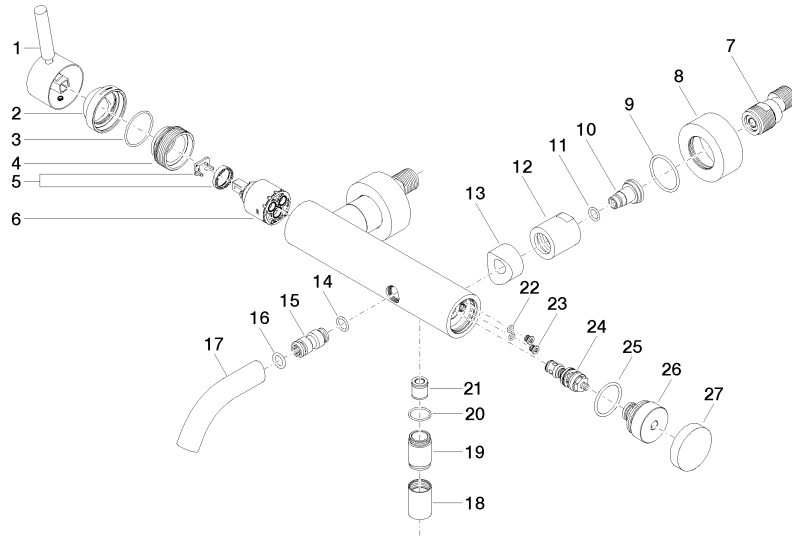
---

LGA\_29

# META Single-lever tub mixer for wall-mounted installation without hand shower set - Brushed Dark Platinum

META

33 200 660 Product version from 7/1/2023





## META Single-lever tub mixer for wall-mounted installation without hand shower set - Brushed Dark Platinum

META

33 200 660 Product version from 7/1/2023

### Spare parts list

Number	Item Number	Designation	Number of units	Lead time
21	90 23 01 141 00 90	back-flow preventer	1.00	2
27	09 20 62 031-99	handle	1.00	60
2	09 28 30 032-99	cover	1.00	60
1	90 20 66 007 00-99	handle	1.00	20
9	09 14 10 119 90	seal	2.00	2
15	09 24 04 043 90	nipple	1.00	2
16	90 14 10 011 00 90	seal	1.00	2
8	09 27 62 004-99	rosette	2.00	20
24	90 31 09 032 00-99	diverter	1.00	20
3	09 14 10 102 90	seal	1.00	2
19	09 24 03 115 20-99	nipple	1.00	20
17	90 11 06 213 00-99	spout	1.00	20
12	09 23 10 048-99	nut	2.00	20
5	90 28 10 148 00 90	accessories	1.00	2
4	09 24 04 296 90	nut	1.00	2
25	09 14 10 101 90	seal	1.00	2
18	90 21 02 069 00-99	cover	1.00	20
11	09 14 10 008 90	seal	2.00	2
10	09 29 05 005 20 90	nipple	2.00	60
26	09 21 10 035 20-99	nipple	1.00	60
6	90 15 05 064 00 90	cartridge	1.00	2
7	04 11 04 030 00 90	connection	2.00	2
14	09 14 10 003 90	seal	1.00	2
22	09 14 10 001 90	seal	2.00	2
23	09 30 30 113 20 90	screw	2.00	2
20	90 14 10 032 00 90	seal	1.00	2
13	09 18 40 059-99	sleeve	2.00	60