





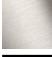



IMO Single-lever tub mixer for wall-mounted installation without hand shower set - Dark Chrome

IMO

33 200 671 Product version from 4/1/2024



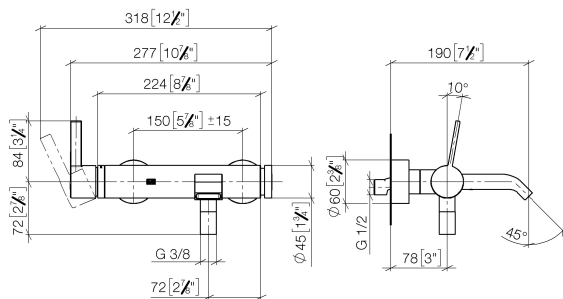
- 7-1/2" Projection
 - Round aerator
 - Integrated diverter
 - 3/8" Shower outlet
 - Flanges Ø 2-3/8"
 - 1/2" connection
 - Center to center 5-7/8" ± 5/8"
 - Water flow rate limited to max. 4.4 gpm
- (ADA)
- Internal backflow preventer.
- NOTE: Local building codes may require the use of an anti-scald device. Please refer to remote pressure balance valve (35 914 970 90)

	Dark Chrome	33 200 671-19 0010
	Chrome	33 200 671-00 0010
	Brushed Platinum	33 200 671-06 0010
	Matte Black	33 200 671-33 0010
	Brushed Chrome	33 200 671-93 0010
	Brushed Dark Platinum	33 200 671-99 0010

IMO Single-lever tub mixer for wall-mounted installation without hand shower set - Dark Chrome

IMO

33 200 671 Product version from 4/1/2024
mm [inches]



Flow rate chart



Codes & Standards

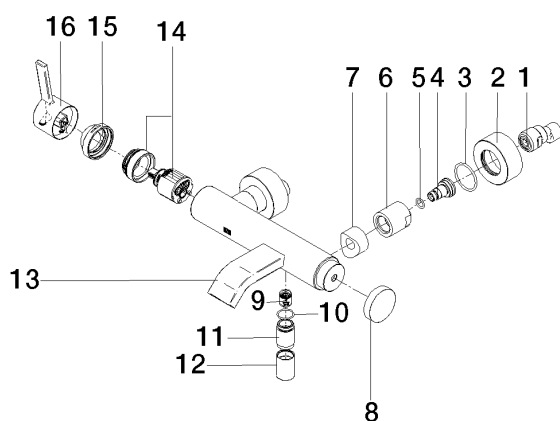
ADA

IMO Single-lever tub mixer for wall-mounted installation without hand shower set - Dark Chrome

IMO

33 200 671 Product version from 4/1/2024

Parts for other
finishes can be found
here: [Chrome](#)



Spare parts list

Number	Item Number	Designation	Number of units	Lead time
9	90 23 01 141 00 90	back-flow preventer	1.00	2
7	09 18 40 059-19	sleeve	2.00	20
6	09 23 10 048-19	nut	2.00	20
15	09 28 30 032-19	cover	1.00	20
11	09 24 03 115 20-19	nipple	1.00	20
10	90 14 10 032 00 90	seal	1.00	2
5	09 14 10 008 90	seal	2.00	2
16	90 20 67 020 00-19	handle	1.00	-
Spare part can no longer be ordered, please order the replacement item				
13	90 11 06 228 00-19	spout	1.00	-
Spare part can no longer be ordered, please order the replacement item				
8	09 20 62 031-19	handle	1.00	20
12	90 21 02 069 00-19	cover	1.00	20
2	09 27 62 004-19	rosette	2.00	20
14	90 15 05 046 01 90	cartridge	1.00	2
1	04 11 04 030 00 90	connection	1.00	2
4	09 29 05 005 20 90	nipple	2.00	60
3	09 14 10 119 90	seal	2.00	2