






## EDITION PRO Single-lever shower mixer For wall mounting - Chrome

---

33 300 626



- 3/8" Shower outlet
- Flanges Ø 2-3/8"
- 1/2" connection
- Center to center 5-7/8" ± 5/8"
- Internal back flow preventer

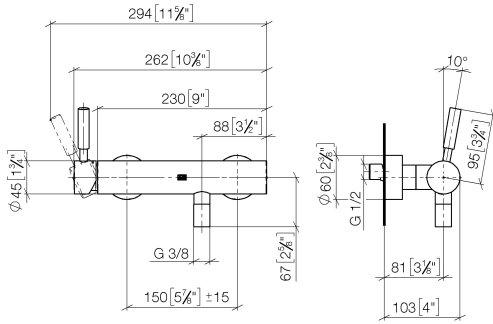
	Chrome	33 300 626-00
	Matte Black	33 300 626-33
	Brushed Chrome	33 300 626-93

**EDITION PRO Single-lever shower mixer For wall mounting - Chrome**

---

33 300 626

mm [inches]



**Codes & Standards**

---

DIN 4109

ISO 3822

Ü-Zeichen

**Certificates**

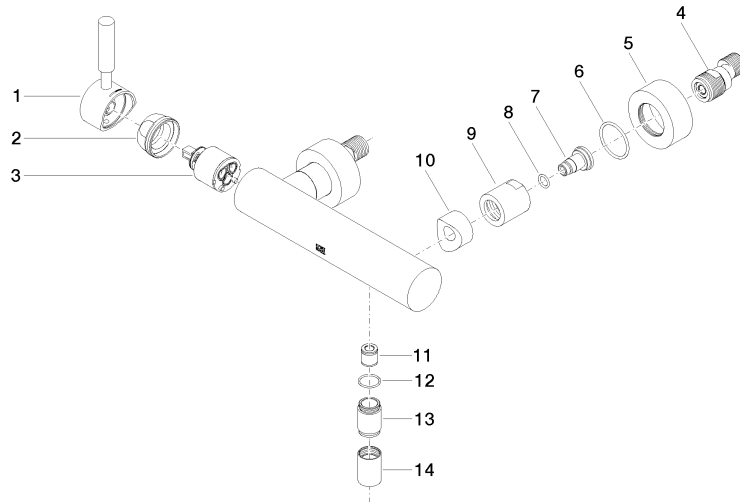
---

LGA\_29

**EDITION PRO Single-lever shower mixer For wall mounting - Chrome**

33 300 626

Parts for other finishes can be found here: [Matte Black](#)



**Spare parts list**

Number	Item Number	Designation	Number of units	Lead time
1	90 20 62 049 00-00	handle	1	10
2	09 24 04 107-00	nut	1	10
3	90 15 05 064 00 90	cartridge	1	2
4	04 11 04 030 00 90	connection	2	2
5	09 27 62 004-00	rosette	2	10
6	09 14 10 119 90	seal	2	2
7	09 29 05 005 20 90	nipple	2	60
8	09 14 10 008 90	seal	2	2
9	09 23 10 048-00	nut	2	10
10	09 18 40 059-00	sleeve	2	10
11	90 23 01 040 00 90	back-flow preventer	1	2
12	90 14 10 032 00 90	seal	1	2
13	09 24 03 115 20-00	nipple	1	10
14	90 21 02 069 00-00	cover	1	10