




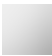

EDITION PRO Single-lever shower mixer For wall mounting - Matte Black

EDITION PRO

33 300 626

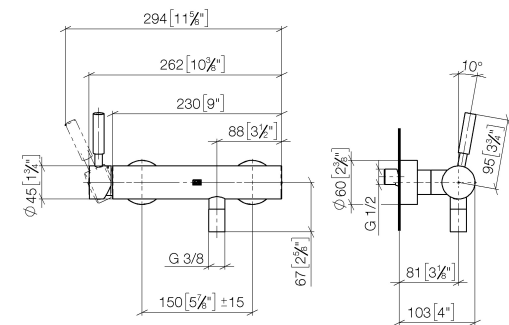


- 3/8" Shower outlet
- Flanges Ø 2-3/8"
- 1/2" connection
- Center to center 5-7/8" ± 5/8"
- Internal back flow preventer

	Matte Black	33 300 626-33
	Chrome	33 300 626-00
	Brushed Chrome	33 300 626-93

33 300 626

mm [inches]



## Codes & Standards

DIN 4109

ISO 3822

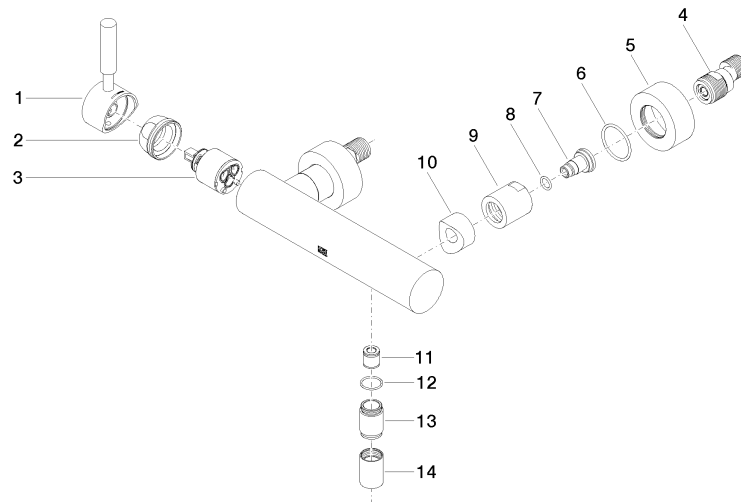
Ü-Zeichen

## Certificates and sustainability

LGA\_29

33 300 626

Parts for other  
finishes can be found  
here: [Chrome](#)



## Spare parts list

Number	Item Number	Designation	Number of units	Lead time
4	04 11 04 030 00 90	connection	2.00	2
6	09 14 10 119 90	seal	2.00	2
2	09 24 04 107-33	nut	1.00	30
9	09 23 10 048-33	nut	2.00	30
11	90 23 01 040 00 90	back-flow preventer	1.00	2
1	90 20 62 049 00-33	handle	1.00	30
13	09 24 03 115 20-33	nipple	1.00	30
5	09 27 62 004-33	rosette	2.00	30
8	09 14 10 008 90	seal	2.00	2
10	09 18 40 059-33	sleeve	2.00	30
3	90 15 05 064 00 90	cartridge	1.00	2
14	90 21 02 069 00-33	cover	1.00	30
12	90 14 10 032 00 90	seal	1.00	2
7	09 29 05 005 20 90	nipple	2.00	60