

META Single-lever lavatory mixer with drain - Chrome

META

33 500 661 Product version up to 1/23/2020



- 6-5/8" Projection
- US drain with overflow
- Swiveling spout 360°
- Round aerated stream
- Total height 12-1/4"
- Height to aerator/spout outlet 8-7/8"
- 1-3/8" hole diameter
- 2 x pressure hose with 3/8" compression fitting
- Water flow rate limited to max. 1.2 gpm
- lead-free
- This product can help a building meet the requirements of Green Building Rating Systems, e.g. LEED®, BREEAM®, DGNB

(ADA)

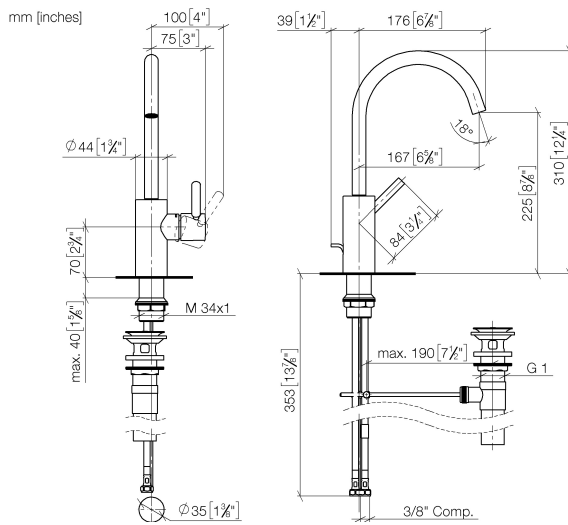
Suitable only for basins with overflow.

| | | |
|---|-------------------------------|--------------------|
|  | Chrome | 33 500 661-00 0010 |
|  | Brushed Platinum | 33 500 661-06 0010 |
|  | Dark Chrome | 33 500 661-19 0010 |
|  | Light gold | 33 500 661-26 0010 |
|  | Brushed Light Gold | 33 500 661-27 0010 |
|  | Matte Black | 33 500 661-33 0010 |
|  | Brushed Dark Brass | 33 500 661-39 0010 |
|  | Brushed Bronze | 33 500 661-42 0010 |
|  | Brushed Champagne (22kt Gold) | 33 500 661-46 0010 |
|  | Champagne (22kt Gold) | 33 500 661-47 0010 |
|  | Brushed Chrome | 33 500 661-93 0010 |
|  | Brushed Dark Platinum | 33 500 661-99 0010 |

META Single-lever lavatory mixer with drain - Chrome

META

33 500 661 Product version up to 1/23/2020



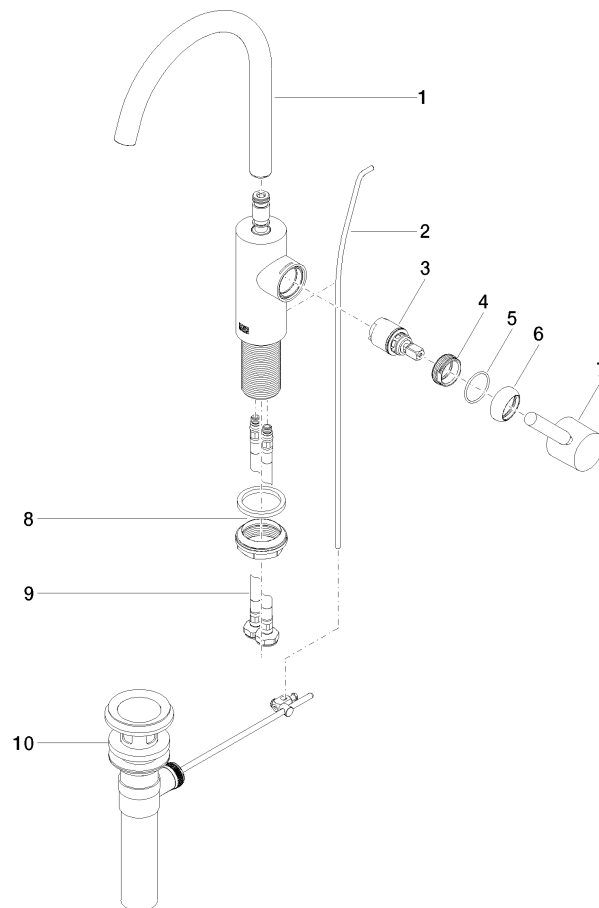
Codes & Standards

| | | | |
|----------------|----------------|------------------------------------|------------|
| ADA | ASME A112.18.1 | California Energy Commission (CEC) | cUPC |
| EPA WaterSense | NSF372 | NSF61 | WaterSense |



Certificates and sustainability

| | | | |
|-----------|---------|------------|--------------|
| IAPMO_N-4 | IAPMO_6 | IAPMO_8834 | IAPMO_4976 (|
|-----------|---------|------------|--------------|



Spare parts list

| Number | Item Number | Designation | Number of units | Lead time |
|--------|--------------------|-----------------------------|-----------------|-----------|
| 6 | 09 28 30 021-00 | cover | 1.00 | 10 |
| 3 | 90 15 05 044 00 90 | cartridge | 1.00 | 2 |
| 4 | 09 24 04 266 90 | nut | 1.00 | 2 |
| 7 | 90 20 66 003 00-00 | handle | 1.00 | 10 |
| 9 | 04 30 04 102 00 90 | Flexible supply line 3/8" - | 2.00 | 2 |
| 5 | 09 14 10 091 90 | seal | 1.00 | 2 |
| 2 | 09 31 09 110-00 | pull-rod | 1.00 | 10 |
| 1 | 90 28 22 320 01-00 | spout | 1.00 | 10 |
| 8 | 04 23 10 044 07 90 | fixing set | 1.00 | 2 |
| 10 | 90 11 01 023 00-00 | pop-up waste | 1.00 | 10 |