

IMO Single-lever lavatory mixer with drain - Brushed Light Gold

IMO


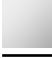


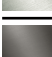

33 500 671 Product version from 4/1/2024



- 4-7/8" Projection
- US drain with overflow
- Rigid spout
- Rectangular aerated stream
- Total height 5-3/8"
- Height to aerator/spout outlet 2-3/4"
- 1-3/8" hole diameter
- 2 x pressure hose with 3/8" compression fitting
- Water flow rate limited to max. 1.2 gpm
- lead-free
- This product can help a building meet the requirements of Green Building Rating Systems, e.g. LEED®, BREEAM®, DGNB

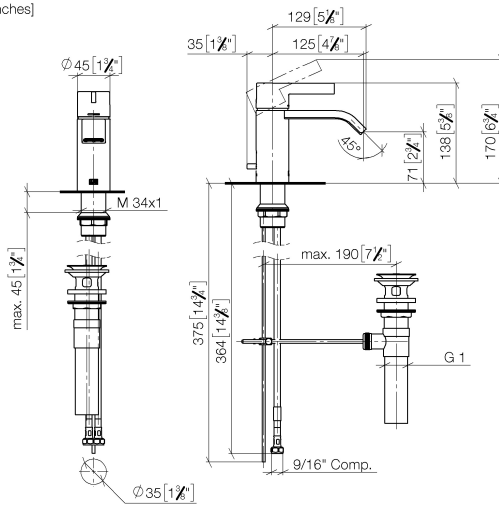
Suitable only for basins with overflow.

(ADA)

	Brushed Light Gold	33 500 671-27 0010
	Chrome	33 500 671-00 0010
	Brushed Platinum	33 500 671-06 0010
	Dark Chrome	33 500 671-19 0010
	Matte Black	33 500 671-33 0010
	Brushed Chrome	33 500 671-93 0010
	Brushed Dark Platinum	33 500 671-99 0010

33 500 671 Product version from 4/1/2024

mm [inches]

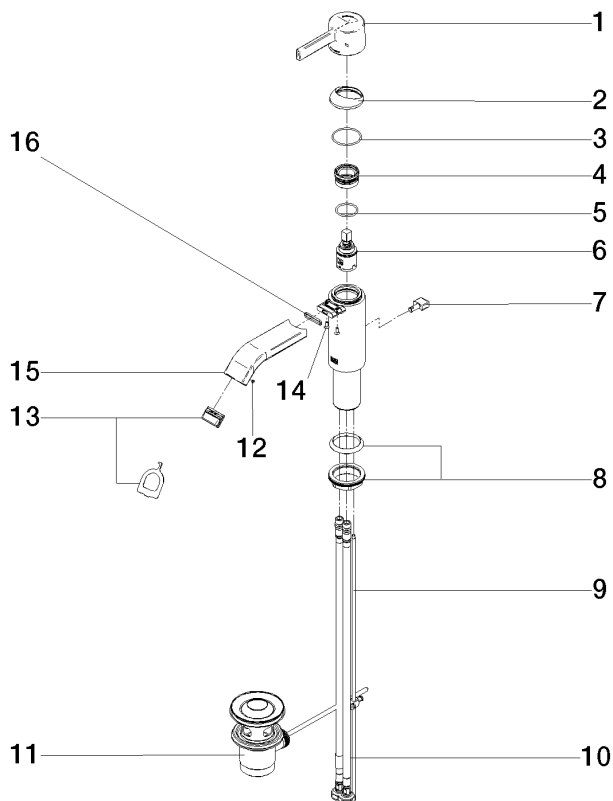


Codes & Standards

ADA

33 500 671 Product version from 4/1/2024

Parts for other
finishes can be found
here: [Chrome](#)



Spare parts list

Number	Item Number	Designation	Number of units	Lead time
8	04 23 10 044 07 90	fixing set	1.00	2
14	09 30 30 166 90	screw	2.00	2
5	09 14 10 112 90	seal	1.00	2
6	90 15 05 042 00 90	cartridge	1.00	2
7	09 20 67 002-27	handle	1.00	60
13	90 29 03 134 00 90	aerator	1.00	2
3	09 14 10 102 90	seal	1.00	2
2	90 28 30 059 00-27	cover	1.00	-
Spare part can no longer be ordered, please order the replacement item				
12	09 31 11 006 90	pin	1.00	2
4	90 23 10 146 00 90	nut	1.00	2
1	90 20 67 019 00-27	handle	1.00	30
16	09 14 10 017 90	seal	1.00	2
9	09 31 09 080-27	pull-rod	1.00	60
15	90 28 22 440 00-27	spout	1.00	30
10	04 30 04 106 00 90	hose	2.00	2
11	90 11 01 023 00-27	pop-up waste	1.00	30