

## MEM Single-lever lavatory mixer with drain - Chrome

MEM

33 500 782 Product version from 3/10/2014 to 3/19/2019



- 6-1/2" Projection
- US drain with overflow
- Rigid spout
- Rectangular aerated stream
- Total height 12-1/4"
- Height to aerator/spout outlet 8"
- 1-3/8" hole diameter
- 2 x pressure hose with 3/8" compression fitting
- Water flow rate limited to max. 1.2 gpm
- lead-free
- This product can help a building meet the requirements of Green Building Rating Systems, e.g. LEED®, BREEAM®, DGNB

(ADA)

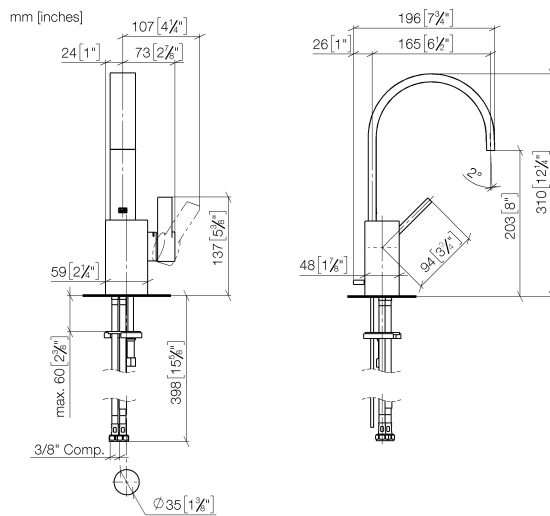
Suitable only for basins with overflow.

	Chrome	33 500 782-00 0010
	Brushed Platinum	33 500 782-06 0010
	Platinum	33 500 782-08 0010
	Dark Chrome	33 500 782-19 0010
	Brushed Durabronze (23kt Gold)	33 500 782-28 0010
	Brushed Champagne (22kt Gold)	33 500 782-46 0010
	Champagne (22kt Gold)	33 500 782-47 0010
	Brushed Dark Platinum	33 500 782-99 0010

## MEM Single-lever lavatory mixer with drain - Chrome

MEM

33 500 782 Product version from 3/10/2014 to 3/19/2019



### Codes & Standards

ADA

California Energy  
Commission  
(CEC)

NSF372

NSF61

### Certificates and sustainability

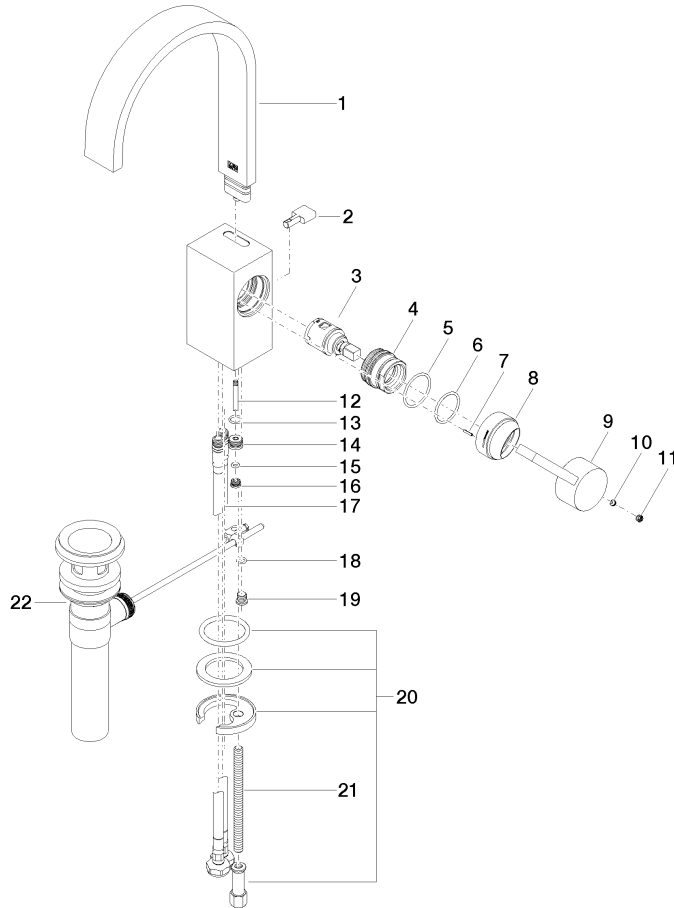
IAPMO\_N-4976

IAPMO\_6397

## MEM Single-lever lavatory mixer with drain - Chrome

MEM

33 500 782 Product version from 3/10/2014 to 3/19/2019



# MEM Single-lever lavatory mixer with drain - Chrome

MEM

33 500 782 Product version from 3/10/2014 to 3/19/2019

## Spare parts list

Number	Item Number	Designation	Number of units	Lead time
19	09 31 20 027 10-00	plug	1.00	10
2	09 20 78 032-00	handle	1.00	10
21	09 31 11 012 90	pin	1.00	2
15	09 14 10 166 90	seal	1.00	2
17	04 30 04 106 00 90	hose	2.00	2
9	09 20 78 057-00	handle	1.00	10
18	09 14 10 132 90	seal	1.00	2
16	09 24 04 290 90	nipple	1.00	2
12	09 31 09 080-00	pull-rod	1.00	10
13	09 14 10 042 90	seal	1.00	2
20	04 30 11 038 75 90	fixing set	1.00	2
5	09 14 10 137 90	seal	1.00	2
14	09 24 04 289-00	nipple	1.00	10
3	90 15 05 042 00 90	cartridge	1.00	2
7	09 31 11 152 90	pin	1.00	2
1	90 28 22 153 02-00	spout	1.00	10
4	09 24 04 288 90	nut	1.00	2
8	09 28 30 028-00	cover	1.00	10
22	90 11 01 023 00-00	pop-up waste	1.00	10
11	90 31 20 109 00 90	plug	1.00	2
6	90 14 10 063 00 90	seal	1.00	2
10	90 31 11 063 00 90	pin	1.00	2