



META Single-lever lavatory mixer with drain - Dark Chrome

META

33 505 660 Product version from 5/1/2022 to 4/1/2025



- 4-7/8" Projection
- With faceted structure
- Rigid spout
- Round aerated stream
- Total height 5-3/8"
- Height to aerator/spout outlet 2"
- 1-3/8" hole diameter
- 2x 3/8" flexible supply lines
- Water flow rate limited to max. 1.2 gpm
- lead-free
- This product can help a building meet the requirements of Green Building Rating Systems, e.g. LEED®, BREEAM®, DGNB

Suitable only for basins with overflow.  
(ADA)

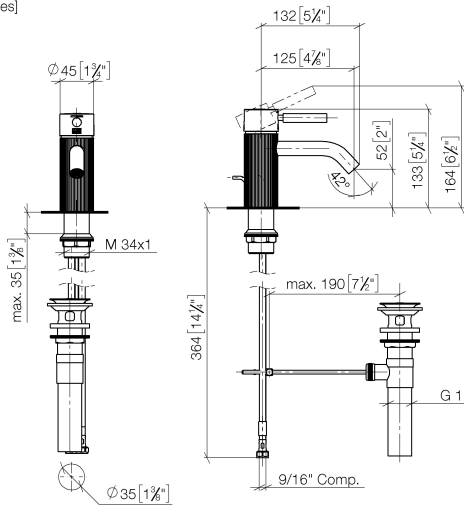
|   |                               |                    |
|---|-------------------------------|--------------------|
|    | Dark Chrome                   | 33 505 660-19 0010 |
|    | Chrome                        | 33 505 660-00 0010 |
|    | Brushed Platinum              | 33 505 660-06 0010 |
|    | Light gold                    | 33 505 660-26 0010 |
|    | Brushed Light Gold            | 33 505 660-27 0010 |
|    | Matte Black                   | 33 505 660-33 0010 |
|    | Brushed Dark Brass            | 33 505 660-39 0010 |
|    | Brushed Bronze                | 33 505 660-42 0010 |
|    | Brushed Champagne (22kt Gold) | 33 505 660-46 0010 |
|   | Champagne (22kt Gold)         | 33 505 660-47 0010 |
|  | Brushed Chrome                | 33 505 660-93 0010 |
|  | Brushed Dark Platinum         | 33 505 660-99 0010 |

## META Single-lever lavatory mixer with drain - Dark Chrome

META

33 505 660 Product version from 5/1/2022 to 4/1/2025

mm [inches]



### Codes & Standards

|                |                |                                    |            |
|----------------|----------------|------------------------------------|------------|
| ADA            | ASME A112.18.1 | California Energy Commission (CEC) | cUPC       |
| EPA WaterSense | NSF372         | NSF61                              | WaterSense |



### Certificates and sustainability

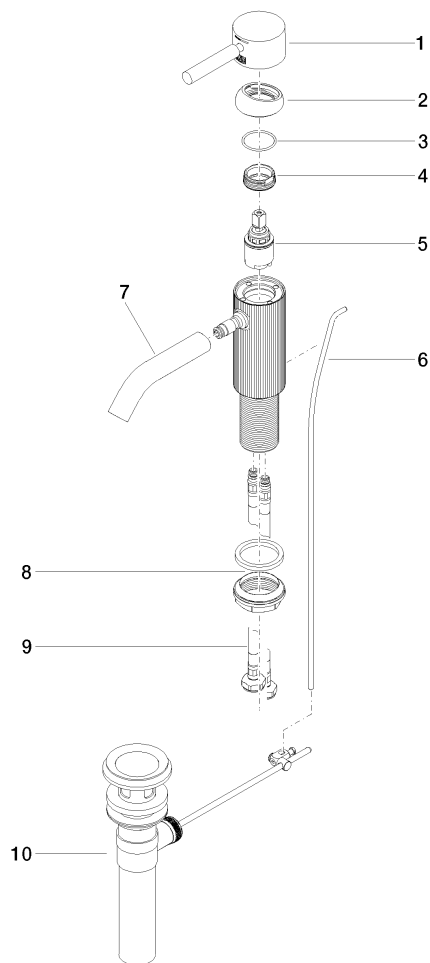
IAPMO\_N-4976 IAPMO\_6397 IAPMO\_8834 IAPMO\_4976 (

## META Single-lever lavatory mixer with drain - Dark Chrome

META

33 505 660 Product version from 5/1/2022 to 4/1/2025

Parts for other  
finishes can be found  
here: [Chrome](#)



### Spare parts list

| Number | Item Number        | Designation                 | Number of units | Lead time |
|--------|--------------------|-----------------------------|-----------------|-----------|
| 3      | 09 14 10 091 90    | seal                        | 1.00            | 2         |
| 8      | 04 23 10 044 07 90 | fixing set                  | 1.00            | 2         |
| 2      | 09 28 30 041-19    | cover                       | 1.00            | 20        |
| 9      | 04 30 04 102 00 90 | Flexible supply line 3/8" - | 2.00            | 2         |
| 6      | 09 31 09 110-19    | pull-rod                    | 1.00            | 20        |
| 5      | 90 15 05 044 00 90 | cartridge                   | 1.00            | 2         |
| 1      | 90 20 66 029 00-19 | handle                      | 1.00            | 20        |
| 10     | 90 11 01 023 00-19 | pop-up waste                | 1.00            | 20        |
| 7      | 90 11 06 206 01-19 | spout                       | 1.00            | 20        |
| 4      | 09 24 04 266 90    | nut                         | 1.00            | 2         |