



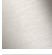




IMO Single-lever lavatory mixer without drain - Dark Chrome

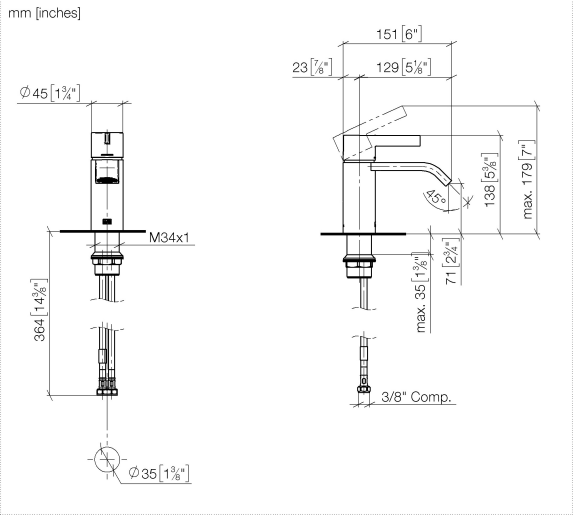
IMO

33 521 671 Product version from 4/1/2024




- 5-1/8" Projection
- Rigid spout
- Rectangular aerated stream
- Total height 5-3/8"
- Height to aerator/spout outlet 2-3/4"
- 1-3/8" hole diameter
- 2 x pressure hose with 3/8" compression fitting
- Water flow rate limited to max. 1.2 gpm
- lead-free
- This product can help a building meet the requirements of Green Building Rating Systems, e.g. LEED®, BREEAM®, DGNB

	Dark Chrome	33 521 671-19 0010
	Chrome	33 521 671-00 0010
	Brushed Platinum	33 521 671-06 0010
	Brushed Light Gold	33 521 671-27 0010
	Matte Black	33 521 671-33 0010
	Brushed Chrome	33 521 671-93 0010
	Brushed Dark Platinum	33 521 671-99 0010



Codes & Standards

ASME A112.18.1	cUPC	EPA WaterSense	NSF372
NSF61	WaterSense		

Certificates and sustainability

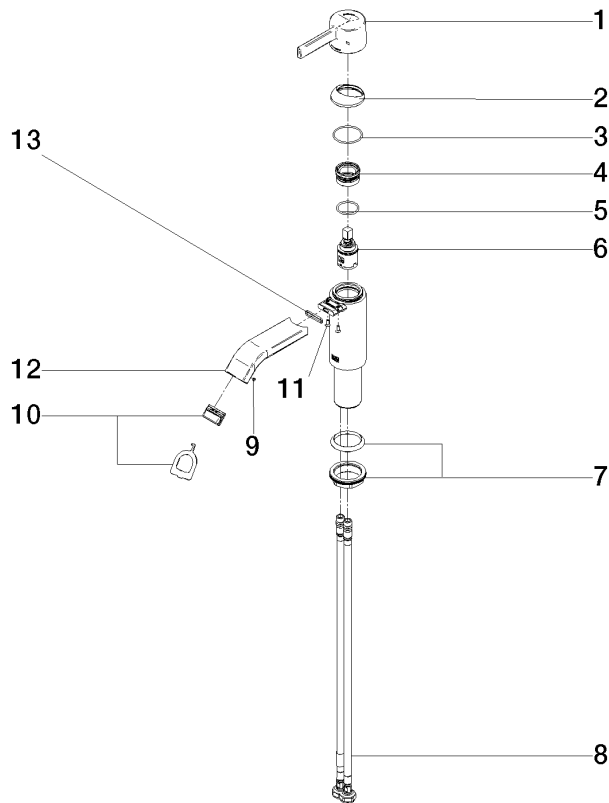
IAPMO_N-4976	IAPMO_6397	IAPMO_8834	IAPMO_4976 (
--------------	------------	------------	--------------

IMO Single-lever lavatory mixer without drain - Dark Chrome

IMO

33 521 671 Product version from 4/1/2024

Parts for other
finishes can be found
here: [Chrome](#)



Spare parts list

Number	Item Number	Designation	Number of units	Lead time
2	90 28 30 059 00-19	cover	1.00	-
Spare part can no longer be ordered, please order the replacement item				
1	90 20 67 019 00-19	handle	1.00	20
13	09 14 10 017 90	seal	1.00	2
5	09 14 10 112 90	seal	1.00	2
10	90 29 03 134 00 90	aerator	1.00	2
7	04 23 10 044 07 90	fixing set	1.00	2
4	90 23 10 146 00 90	nut	1.00	2
8	04 30 04 106 00 90	hose	2.00	2
3	09 14 10 102 90	seal	1.00	2
11	09 30 30 166 90	screw	2.00	2
6	90 15 05 042 00 90	cartridge	1.00	2
9	09 31 11 006 90	pin	1.00	2
12	90 28 22 440 00-19	spout	1.00	20