

META Single-lever lavatory mixer without drain - Brushed Dark Brass

META

33 526 660 Product version from 1/23/2020 to 4/1/2025



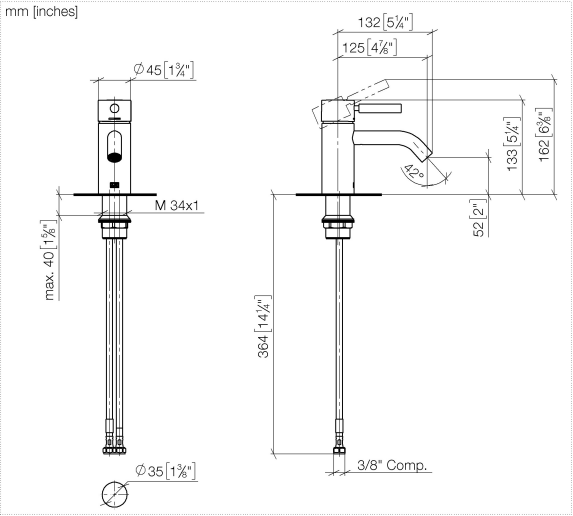
- 4-7/8" Projection
- Rigid spout
- Round aerated stream
- Total height 5-1/4"
- Height to aerator/spout outlet 2"
- 1-3/8" hole diameter
- 2 x pressure hose with 3/8" compression fitting
- Water flow rate limited to max. 1.2 gpm
- lead-free
- This product can help a building meet the requirements of Green Building Rating Systems, e.g. LEED®, BREEAM®, DGNB

(ADA)

	Brushed Dark Brass	33 526 660-39 0010
	Chrome	33 526 660-00 0010
	Brushed Platinum	33 526 660-06 0010
	Dark Chrome	33 526 660-19 0010
	Light gold	33 526 660-26 0010
	Brushed Light Gold	33 526 660-27 0010
	Matte Black	33 526 660-33 0010
	Brushed Bronze	33 526 660-42 0010
	Brushed Champagne (22kt Gold)	33 526 660-46 0010
	Champagne (22kt Gold)	33 526 660-47 0010
	Brushed Chrome	33 526 660-93 0010
	Brushed Dark Platinum	33 526 660-99 0010

33 526 660

Product version from 1/23/2020 to 4/1/2025

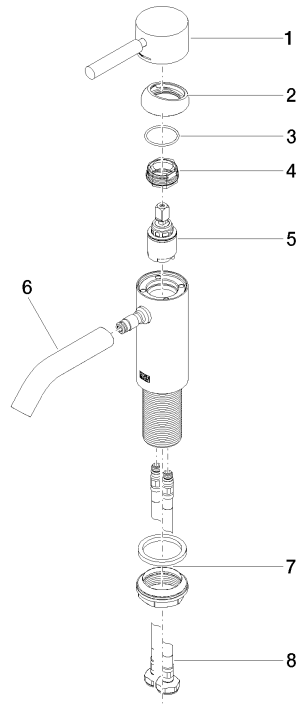


Codes & Standards			
ADA	California Energy Commission (CEC)	NSF372	NSF61

Certificates and sustainability	
IAPMO_N-4976	IAPMO_6397

33 526 660 Product version from 1/23/2020 to 4/1/2025

Parts for other
finishes can be found
here: [Chrome](#)



Spare parts list

Number	Item Number	Designation	Number of units	Lead time
2	09 28 30 041-39	cover	1.00	60
4	09 24 04 266 90	nut	1.00	2
5	90 15 05 044 00 90	cartridge	1.00	2
3	09 14 10 091 90	seal	1.00	2
8	04 30 04 102 00 90	Flexible supply line 3/8" -	2.00	2
1	90 20 66 002 00-39	handle	1.00	30
6	90 11 06 206 01-39	spout	1.00	30
7	04 23 10 044 07 90	fixing set	1.00	2