

## VAIA Single-lever lavatory mixer with extended shank without drain - Chrome

VAIA

33 534 809 Product version from 3/6/2017



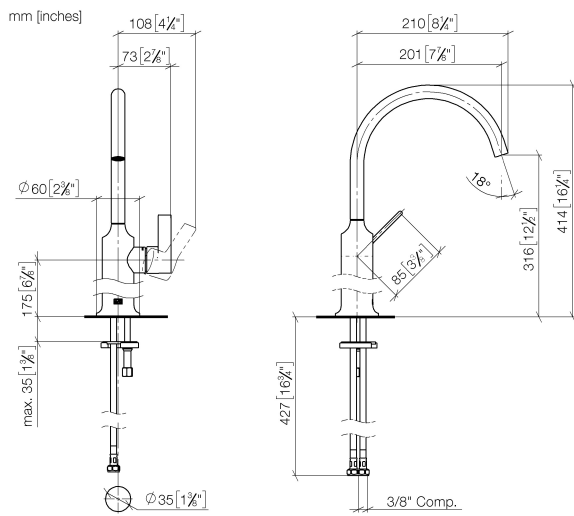
- 7-7/8" Projection
- Swiveling spout 360°
- Round aerated stream
- Total height 16-1/4"
- Height to aerator/spout outlet 12-1/2"
- 1-3/8" hole diameter
- 2 x pressure hose with 3/8" compression fitting
- Water flow rate limited to max. 1.2 gpm
- lead-free
- This product can help a building meet the requirements of Green Building Rating Systems, e.g. LEED®, BREEAM®, DGNB

(ADA)

For combination with vessel sinks.

|   |                                |                    |
|---|--------------------------------|--------------------|
|  | Chrome                         | 33 534 809-00 0010 |
|  | Brushed Platinum               | 33 534 809-06 0010 |
|  | Platinum                       | 33 534 809-08 0010 |
|  | Dark Chrome                    | 33 534 809-19 0010 |
|  | Brushed Durabronze (23kt Gold) | 33 534 809-28 0010 |
|  | Brushed Bronze                 | 33 534 809-42 0010 |
|  | Brushed Champagne (22kt Gold)  | 33 534 809-46 0010 |
|  | Champagne (22kt Gold)          | 33 534 809-47 0010 |
|  | Brushed Dark Platinum          | 33 534 809-99 0010 |

33 534 809 Product version from 3/6/2017



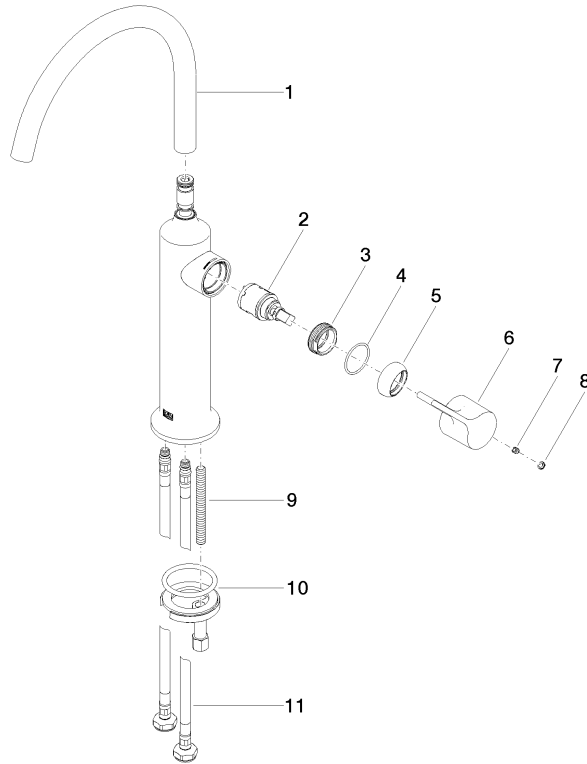
#### Codes & Standards

|                |                |                                    |            |
|----------------|----------------|------------------------------------|------------|
| ADA            | ASME A112.18.1 | California Energy Commission (CEC) | cUPC       |
| EPA WaterSense | NSF372         | NSF61                              | WaterSense |



#### Certificates and sustainability

IAPMO\_N-4976 IAPMO\_6397 IAPMO\_8834 IAPMO\_4976 (



## Spare parts list

| Number | Item Number        | Designation | Number of units | Lead time |
|--------|--------------------|-------------|-----------------|-----------|
| 8      | 90 31 20 087 00-00 | plug        | 1.00            | 10        |
| 10     | 04 30 11 038 00 90 | fixing set  | 1.00            | 2         |
| 3      | 09 24 04 266 90    | nut         | 1.00            | 2         |
| 11     | 04 30 04 103 00 90 | hose        | 2.00            | 2         |
| 4      | 09 14 10 091 90    | seal        | 1.00            | 2         |
| 1      | 90 28 22 313 01-00 | spout       | 1.00            | 10        |
| 5      | 09 28 30 021-00    | cover       | 1.00            | 10        |
| 2      | 90 15 05 042 00 90 | cartridge   | 1.00            | 2         |
| 9      | 09 31 11 011 90    | pin         | 1.00            | 2         |
| 7      | 90 31 11 030 00 90 | pin         | 1.00            | 2         |
| 6      | 90 20 80 070 00-00 | handle      | 1.00            | 10        |