

META Single-lever lavatory mixer with extended shank without drain - Brushed Platinum

META

33 537 660 Product version up to 1/23/2020



- 5-3/8" Projection
- Rigid spout
- Round aerated stream
- Total height 11-3/4"
- Height to aerator/spout outlet 8-5/8"
- 1-3/8" hole diameter
- 2 x pressure hose with 3/8" compression fitting
- Water flow rate limited to max. 1.2 gpm
- lead-free
- This product can help a building meet the requirements of Green Building Rating Systems, e.g. LEED®, BREEAM®, DGNB

(ADA)

For combination with vessel sinks.

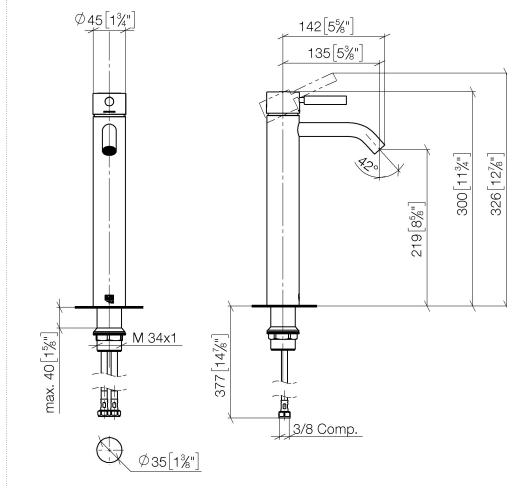
	Brushed Platinum	33 537 660-06 0010
	Chrome	33 537 660-00 0010
	Dark Chrome	33 537 660-19 0010
	Light gold	33 537 660-26 0010
	Brushed Light Gold	33 537 660-27 0010
	Matte Black	33 537 660-33 0010
	Brushed Dark Brass	33 537 660-39 0010
	Brushed Bronze	33 537 660-42 0010
	Brushed Champagne (22kt Gold)	33 537 660-46 0010
	Champagne (22kt Gold)	33 537 660-47 0010
	Brushed Chrome	33 537 660-93 0010
	Brushed Dark Platinum	33 537 660-99 0010

META Single-lever lavatory mixer with extended shank without drain - Brushed Platinum

META

33 537 660 Product version up to 1/23/2020

mm [inches]



Codes & Standards

ADA	ASME A112.18.1	California Energy Commission (CEC)	cUPC
EPA WaterSense	NSF372	NSF61	WaterSense



Certificates and sustainability

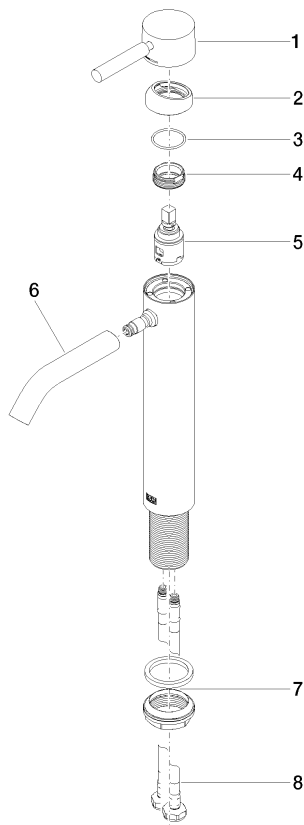
IAPMO_N-4976	IAPMO_6397	IAPMO_4976 (IAPMO_8834
--------------	------------	--------------	------------

META Single-lever lavatory mixer with extended shank without drain - Brushed Platinum

META

33 537 660 Product version up to 1/23/2020

Parts for other
finishes can be found
here: [Chrome](#)



Spare parts list

Number	Item Number	Designation	Number of units	Lead time
6	90 11 06 207 01-06	spout	1.00	10
5	90 15 05 042 00 90	cartridge	1.00	2
1	90 20 66 002 00-06	handle	1.00	10
4	09 24 04 266 90	nut	1.00	2
8	04 30 04 103 00 90	hose	2.00	2
7	04 23 10 044 07 90	fixing set	1.00	2
2	09 28 30 041-06	cover	1.00	10
3	09 14 10 091 90	seal	1.00	2