

## META Single-lever lavatory mixer with extended shank without drain - Matte Black

META

33 537 660 Product version up to 1/23/2020



- 5-3/8" Projection
- Rigid spout
- Round aerated stream
- Total height 11-3/4"
- Height to aerator/spout outlet 8-5/8"
- 1-3/8" hole diameter
- 2 x pressure hose with 3/8" compression fitting
- Water flow rate limited to max. 1.2 gpm
- lead-free
- This product can help a building meet the requirements of Green Building Rating Systems, e.g. LEED®, BREEAM®, DGNB

(ADA)

For combination with vessel sinks.

|   |                               |                    |
|---|-------------------------------|--------------------|
|    | Matte Black                   | 33 537 660-33 0010 |
|    | Chrome                        | 33 537 660-00 0010 |
|    | Brushed Platinum              | 33 537 660-06 0010 |
|    | Dark Chrome                   | 33 537 660-19 0010 |
|    | Light gold                    | 33 537 660-26 0010 |
|    | Brushed Light Gold            | 33 537 660-27 0010 |
|    | Brushed Dark Brass            | 33 537 660-39 0010 |
|    | Brushed Bronze                | 33 537 660-42 0010 |
|    | Brushed Champagne (22kt Gold) | 33 537 660-46 0010 |
|   | Champagne (22kt Gold)         | 33 537 660-47 0010 |
|  | Brushed Chrome                | 33 537 660-93 0010 |
|  | Brushed Dark Platinum         | 33 537 660-99 0010 |

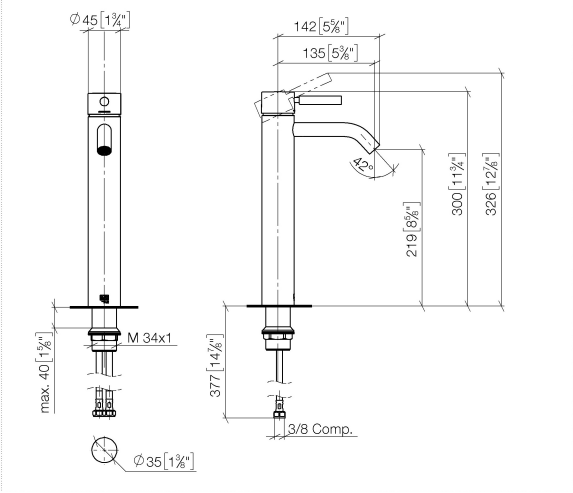


META Single-lever lavatory mixer with extended shank without drain - Matte Black

META

33 537 660 Product version up to 1/23/2020

mm [inches]



Codes & Standards

|                |                |                                    |            |
|----------------|----------------|------------------------------------|------------|
| ADA            | ASME A112.18.1 | California Energy Commission (CEC) | cUPC       |
| EPA WaterSense | NSF372         | NSF61                              | WaterSense |



Certificates and sustainability

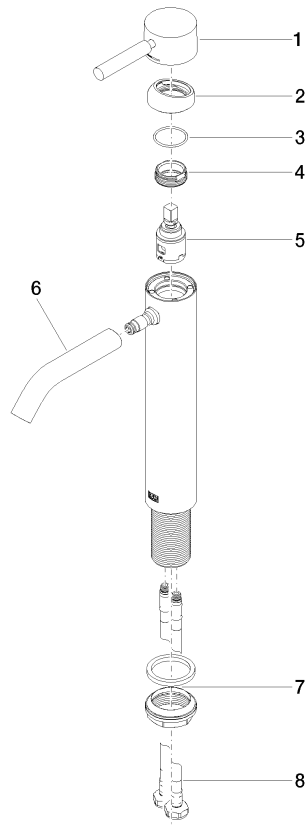
|              |            |              |            |
|--------------|------------|--------------|------------|
| IAPMO_N-4976 | IAPMO_6397 | IAPMO_4976 ( | IAPMO_8834 |
|--------------|------------|--------------|------------|

## META Single-lever lavatory mixer with extended shank without drain - Matte Black

META

33 537 660 Product version up to 1/23/2020

Parts for other  
finishes can be found  
here: [Chrome](#)



### Spare parts list

| Number | Item Number        | Designation | Number of units | Lead time |
|--------|--------------------|-------------|-----------------|-----------|
| 1      | 90 20 66 002 00-33 | handle      | 1.00            | 30        |
| 4      | 09 24 04 266 90    | nut         | 1.00            | 2         |
| 8      | 04 30 04 103 00 90 | hose        | 2.00            | 2         |
| 3      | 09 14 10 091 90    | seal        | 1.00            | 2         |
| 7      | 04 23 10 044 07 90 | fixing set  | 1.00            | 2         |
| 2      | 09 28 30 041-33    | cover       | 1.00            | 30        |
| 5      | 90 15 05 042 00 90 | cartridge   | 1.00            | 2         |
| 6      | 90 11 06 207 01-33 | spout       | 1.00            | 30        |